

# PATINA ORIGINAL

---

Natural, vibrant structures are created by a textured surface that develops a unique patina over time.

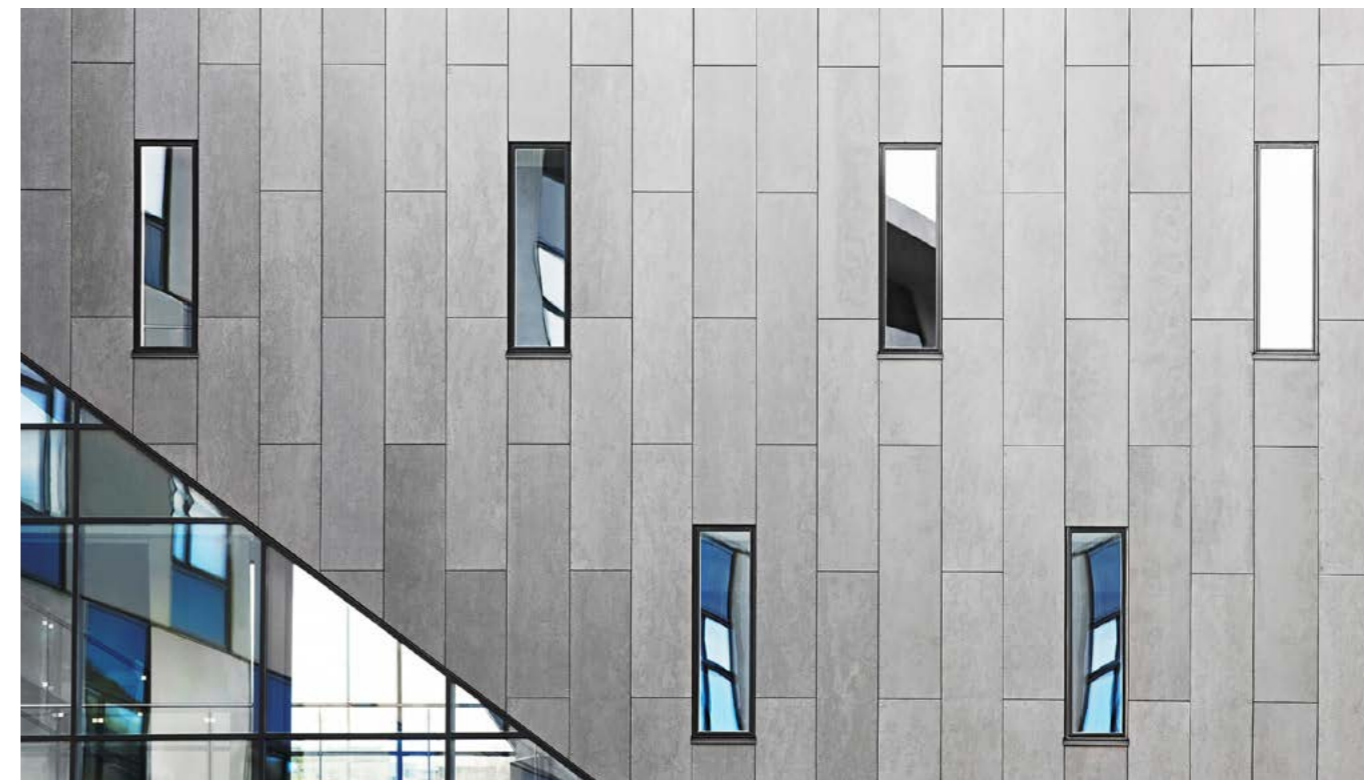
# PATINA ORIGINAL



Patina Original is a coloured fibre cement panel with a textured surface that stylishly showcases the character of the material. The texture emphasises the fibres and the characterful properties of the raw materials. As the seasons change, a subtle patina is created that tells the story of the building and brings its facade to life.

As the panel develops a beautiful patina over time, it gives the building a unique, aesthetic appearance with small, subtle variations in the surface.

Due to the slight sanding, it is important to ensure that Patina Original panels are installed in the correct direction.



Visionshuset, Ålborg, Denmark. Architect: KPF arkitekter, Ålborg, Denmark. Builder: C.W. Obel Ejendomme A/S, Ålborg, Denmark.



## Technical data

### Panels

The panel is through coloured and very finely ground on the visible side. This preserves the structure of the fibre cement and creates a deliberately vibrant character. The panel surfaces are hydrophobized on all sides.

### Panel format

Maximum usable format 3050 x 1250 mm, panel thickness 6 mm and 8 mm

For a detailed summary of the sizing and color options, please refer to our delivery program.

### Colours

11 standard colours. Deviations in the colour shades of the different panels are a natural part of the production properties underlining the vibrant character of the material.

### Mounting

**Visible on wooden substructure:**  
Screws with painted heads

**Visible on metal substructure (aluminium or steel):**  
Blind rivets with painted heads

### Technical data

Detailed information can be found in the DIM - "Design and Installation Manual".