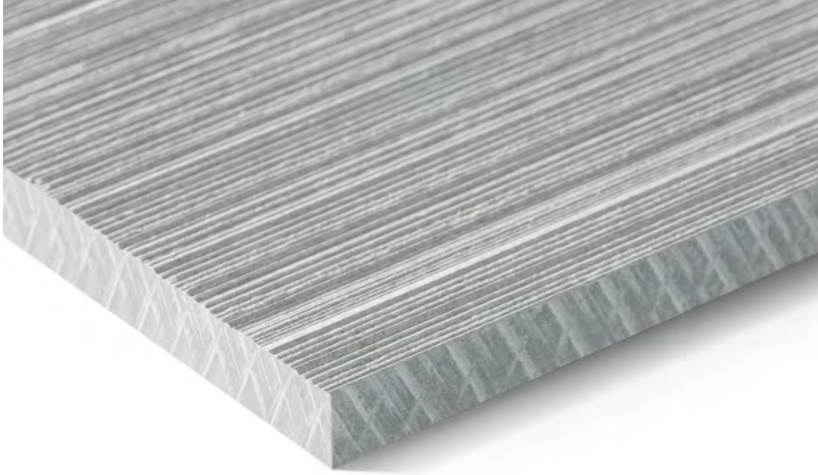


PATINA STRUCTURE NXT

Structure created between shadow and light.
Transforms fiber cement into a visual and
tactile experience.



PATINA STRUCTURE NXT



The surface of Patina Structure NXT reveals a refined, natural rhythm created by subtle linear grooves. As light grazes the material, delicate shadows move across the texture, adding depth to each panel. The structured finish enhances every color variation, creating a dynamic interplay of light and shadow throughout the day and from different viewing angles. The material conveys both strength and sophistication, combining a natural look with modern design sensibilities.

Patina Structure NXT transforms fiber cement into a visual and tactile experience, offering architects a wide range of aesthetic possibilities within the Patina NXT family.

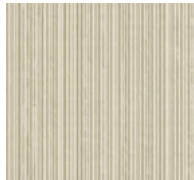


Inspired by Meraner & Hauser OHG/SNC, Bolzano, Italy.

Standard colors



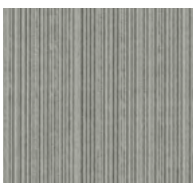
P 222



P 545



P 020

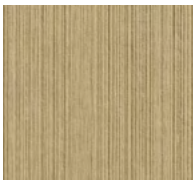


P 045



P 070

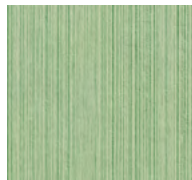
Rare colors



P 313



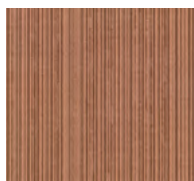
P 333



P 626



P 323



P 343



P 565

Technical data

Panels

The panel is colored through and milled with a natural rhythm created by subtle linear grooves. The fine and versatile texture enhances the architectural depth of each panel. The surfaces on all sides are hydrophobized.

Panel format

Swisspearl Largo:

Maximum usable format
120.08" x 49.21" (3050 x 1250 mm),
panel thickness 0.31" (8 mm)

For a detailed summary of the sizing and color options, please refer to our delivery program.

Colors

5 standard colors and 6 rare colors. Deviations in the color shades of the different panels are a natural part of the production properties, underlining the vibrant character of the material.

Mounting

Visible on wooden substructure:

Screws with painted heads

Visible on metal substructure (aluminum or steel):

Blind rivets with painted head

Technical data

Detailed information can be found in the DIM - "Design and Installation Manual - North America."