

Two Layer Steel Attachment System with Rivets



AMERICAN
FIBER CEMENT



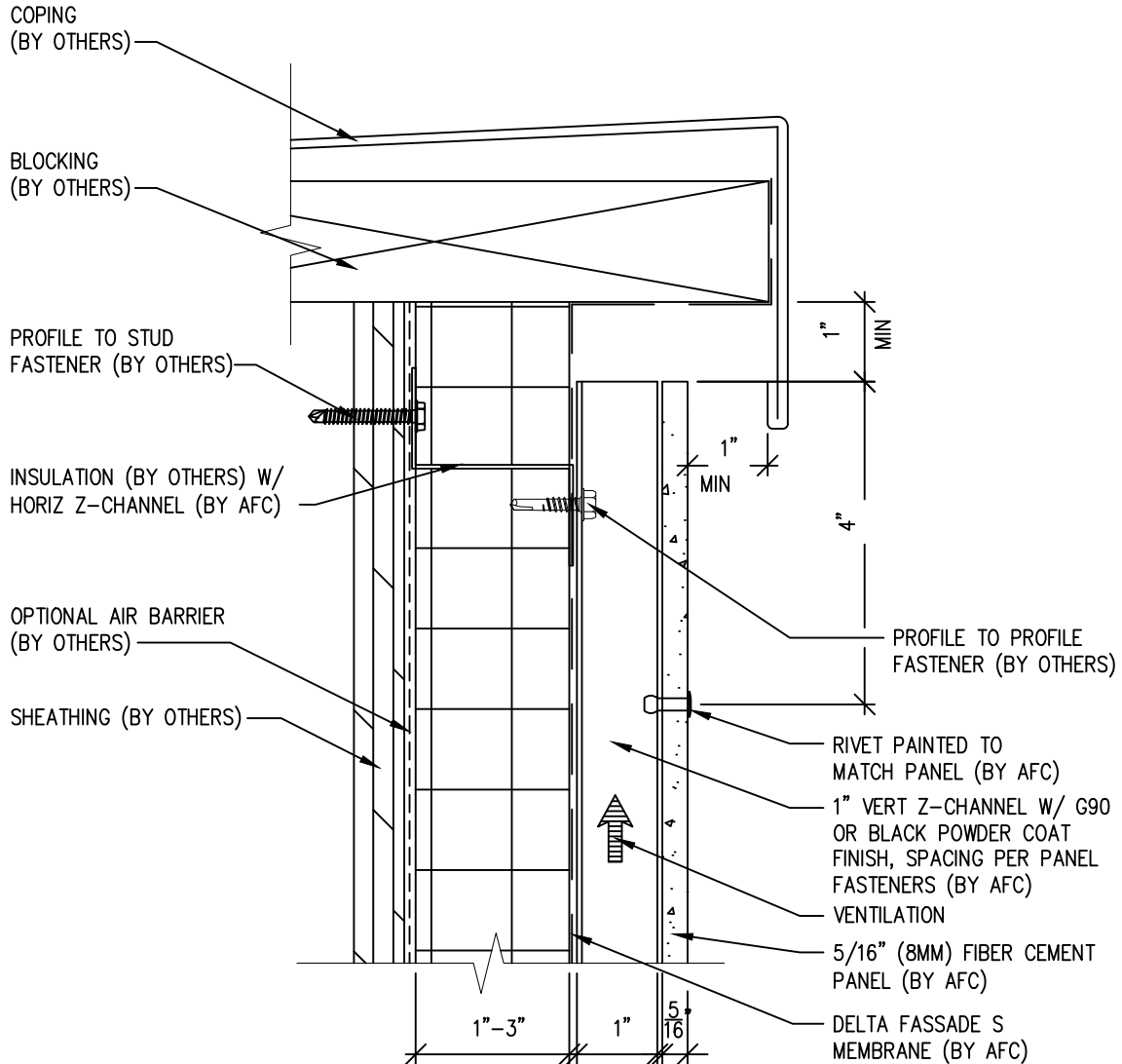
Fiber Cement Ventilated Rainscreen System



Typical Details

- Page 3: Top Panel @ Coping
- Page 4: Top Panel @ Soffit
- Page 5: Top of Panel @ F.C.P Soffit
- Page 6: Horizontal Joint @ Continuous Substrate
- Page 7: Horizontal Joint @ Break In Substrate
- Page 8: Not Permitted @ Break in Substrate
- Page 9: Horizontal Joint @ Expansion Joint
- Page 10: Horizontal Panel Break @ Penetration
- Page 11: Bottom of Panel @ Wall Base
- Page 12: Bottom of Panel @ Open Termination
- Page 13: Bottom of Panel @ Low Roof Flashing
- Page 14: Bottom of Panel @ Soffit
- Page 15: Bottom of Panel @ Soffit (Alternate)
- Page 16: Bottom of Panel @ F.C.P. Soffit
- Page 17: Bottom of Panel @ F.C.P Soffit (Alternate)
- Page 18: Soffit Termination @ Adjacent Material
- Page 19: Bottom of Panel @ Window Head
- Page 20: Bottom of Panel @ Window Head (Alternate)
- Page 21: F.C.P Return @ Window Head
- Page 22: Top of Panel @ Window Sill
- Page 23: Panel Edge @ Window Jamb
- Page 24: Panel Edge @ Window Jamb (Alternate)
- Page 25: F.C.P Return @ Window Jamb
- Page 26: Vertical Panel Joint Option 1
- Page 27: Vertical Panel Joint Option 2
- Page 28: Vertical Panel Break @ Penetration
- Page 29: Panel Edge @ Butt Joint
- Page 30: Panels @ Outside Corner
- Page 31: Panels @ Inside Corner
- Page 32: Expansion Joint @ Inside Corner
- Page 33: Typical Fastener Layout

Two-Layer Steel Attach System



SCALE: 6"=1'-0"

NOTES:

1. PANEL VERTICAL AND HORIZONTAL JOINT SPACING SHOULD BE 3/8" TYPICAL.

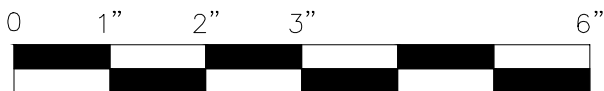
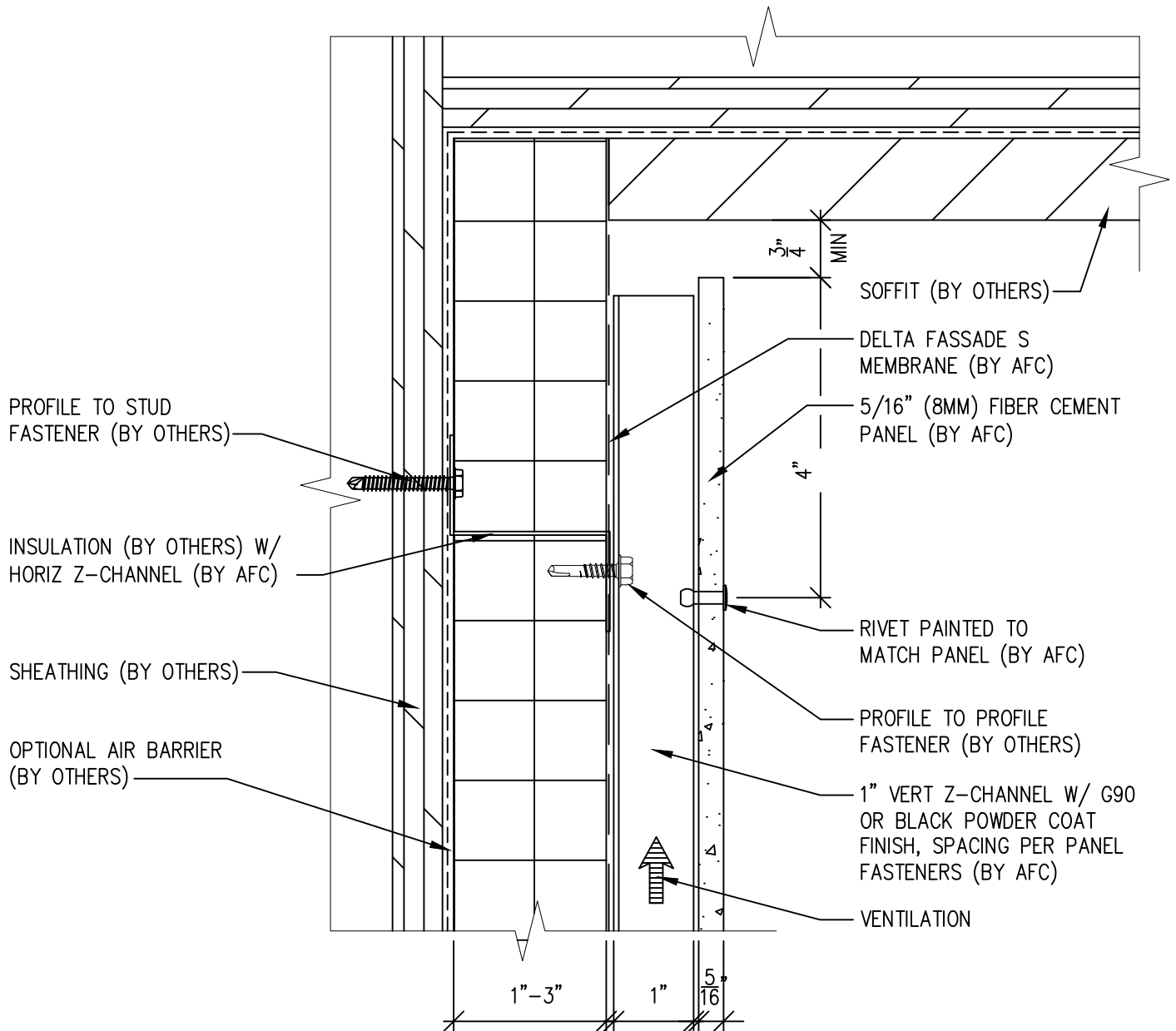


(303) 972-5107
 6901 S Pierce St #180
 Littleton, CO 80128
www.americanfibercement.com

Ref.:
 Top of Panel @
 Coping

Date: 06/07/2023

Two-Layer Steel Attach System



SCALE: 6"=1'-0"

NOTES:

1. PANEL VERTICAL AND HORIZONTAL JOINT SPACING SHOULD BE 3/8" TYPICAL.

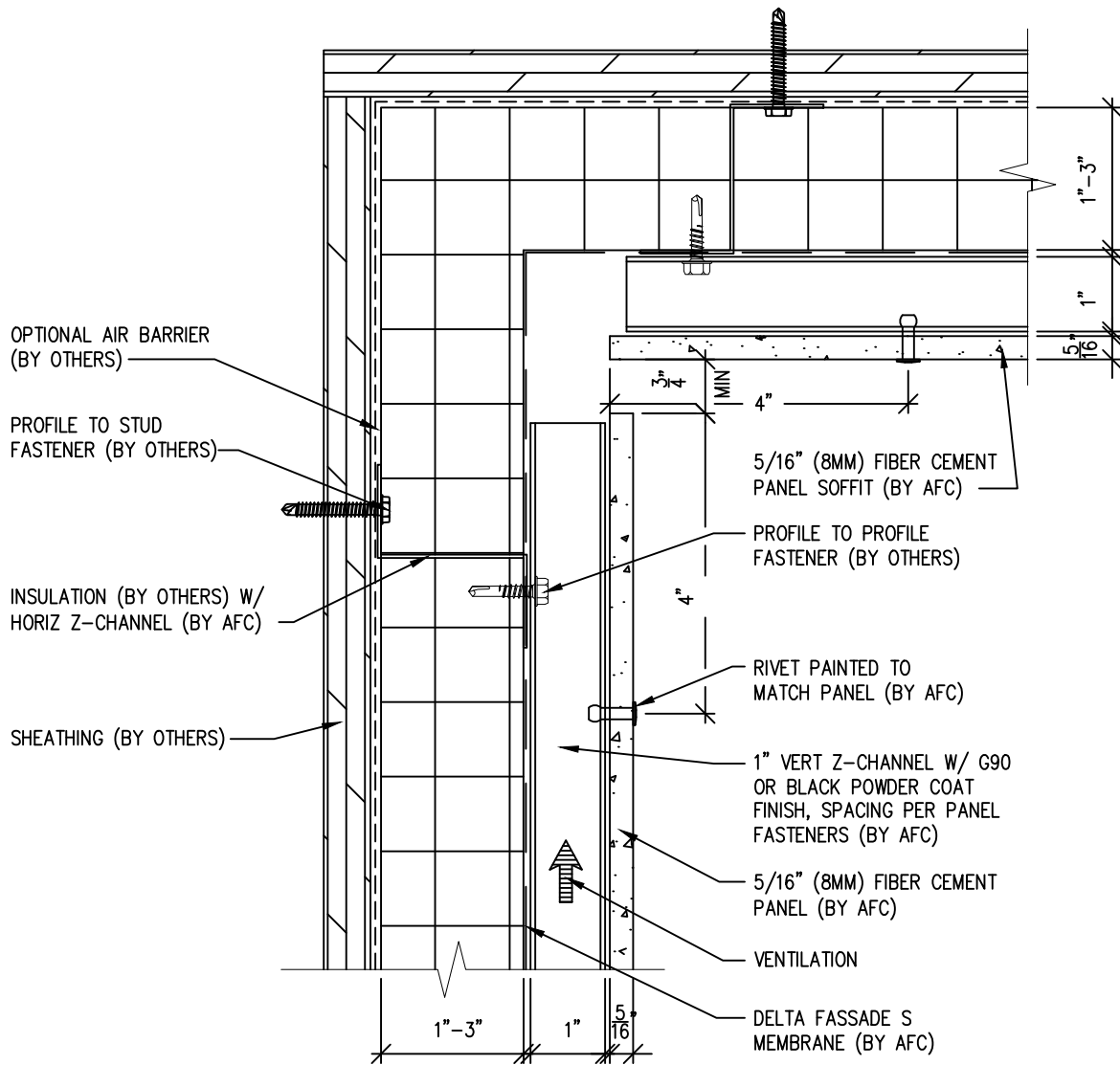


(303) 972-5107
 6901 S Pierce St #180
 Littleton, CO 80128
www.americanfibercement.com

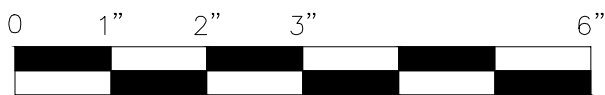
Ref.:
 Top of Panel @
 Soffit

Date: 06/07/2023

Two-Layer Steel Attach System



NOTE:
THE MAXIMUM FASTENER SPACING FOR SOFFIT PANELS IS 16" O.C.



SCALE: 6" = 1'-0"

NOTES:

1. PANEL VERTICAL AND HORIZONTAL JOINT SPACING SHOULD BE 3/8" TYPICAL.

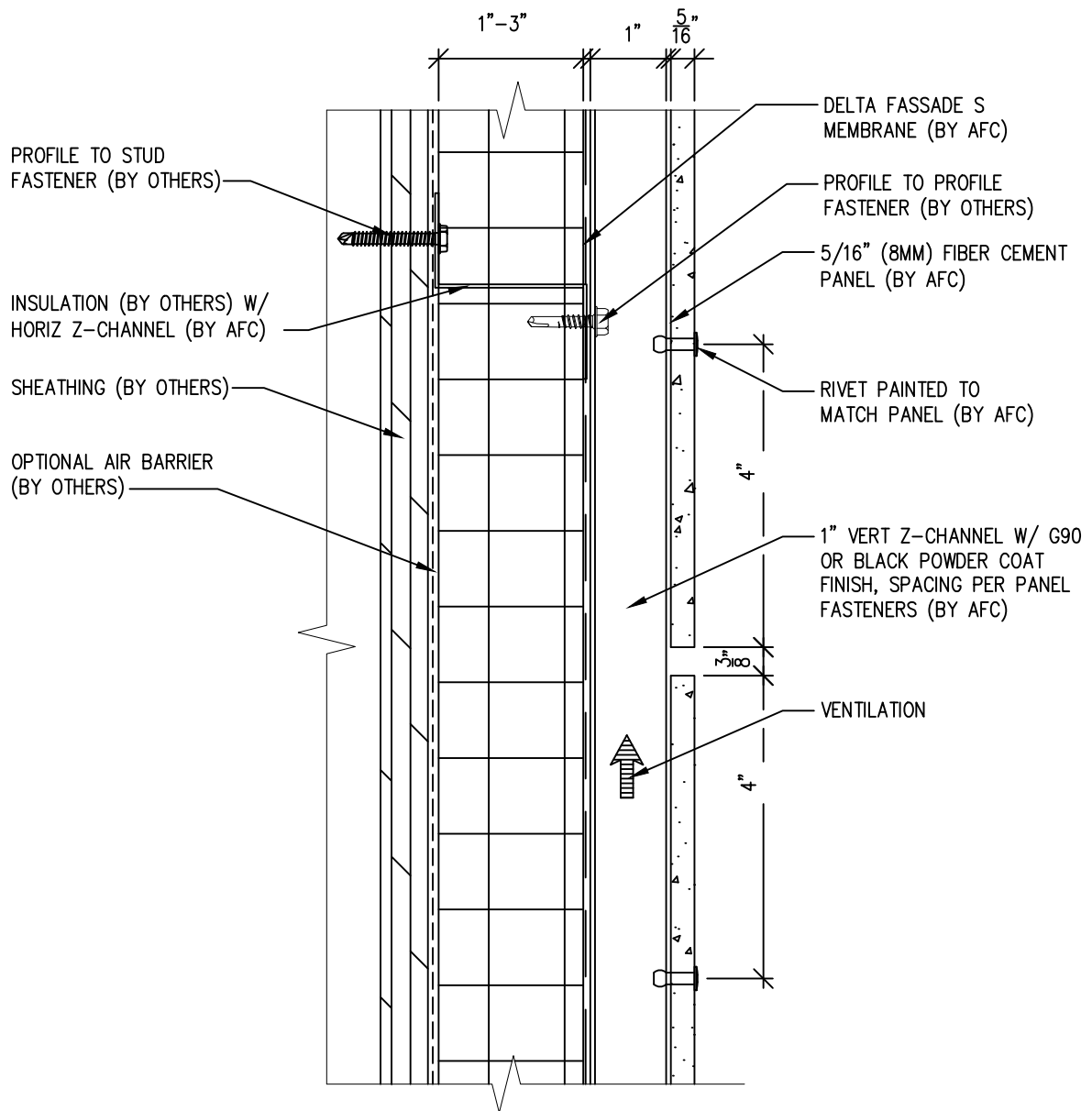


(303) 972-5107
6901 S Pierce St #180
Littleton, CO 80128
www.americanfibercement.com

Ref.:
Top of Panel @ F.C.P
Soffit

Date: 06/07/2023

Two-Layer Steel Attach System



SCALE: 6"=1'-0"

NOTES:

1. PANEL VERTICAL AND HORIZONTAL JOINT SPACING SHOULD BE 3/8" TYPICAL.

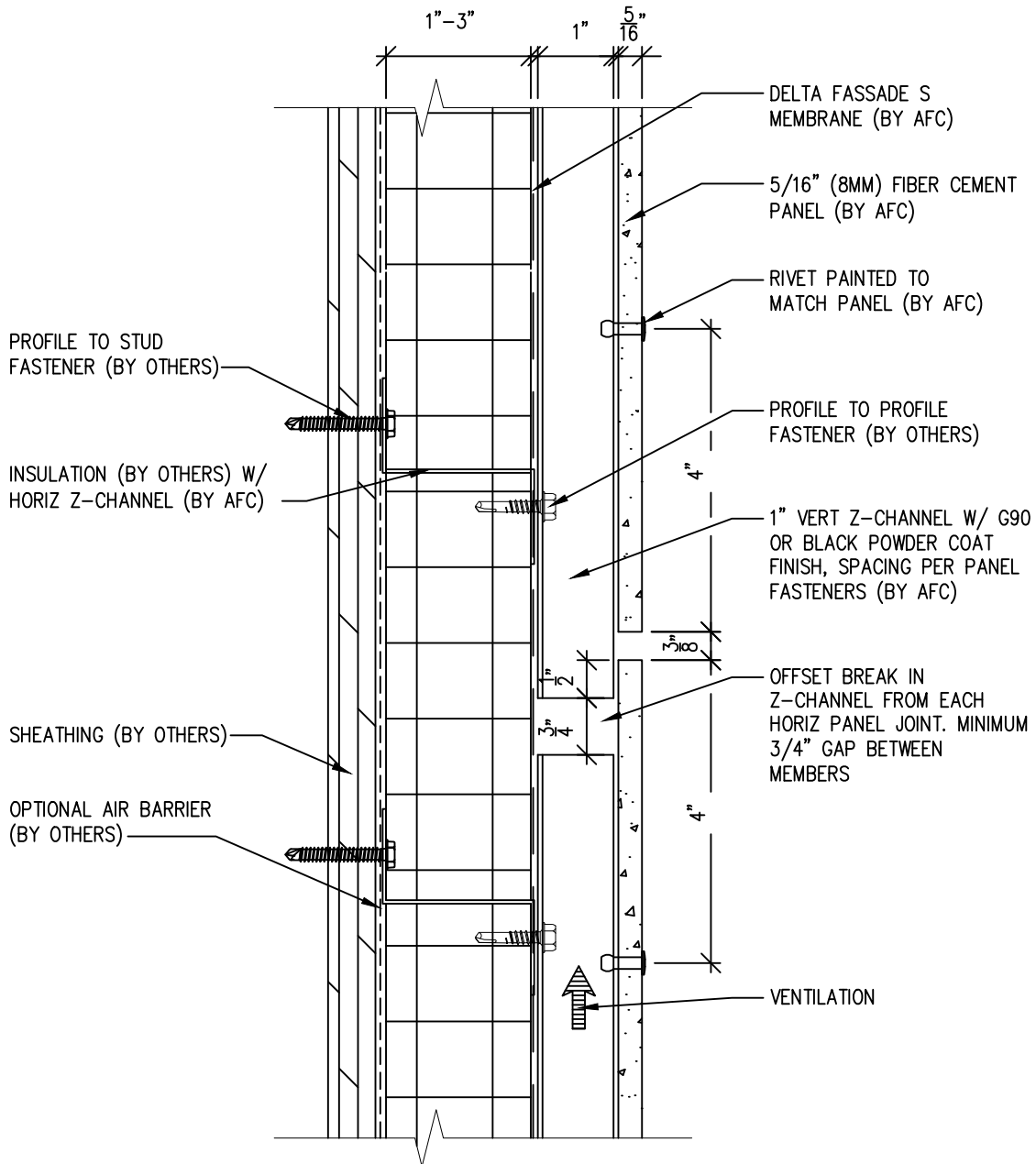


(303) 972-5107
 6901 S Pierce St #180
 Littleton, CO 80128
www.americanfiber cement.com

Ref.:
 Horizontal Joint @
 Continuous Substrate

Date: 06/07/2023

Two-Layer Steel Attach System



SCALE: 6"=1'-0"

NOTES:

1. PANEL VERTICAL AND HORIZONTAL JOINT SPACING SHOULD BE 3/8" TYPICAL.



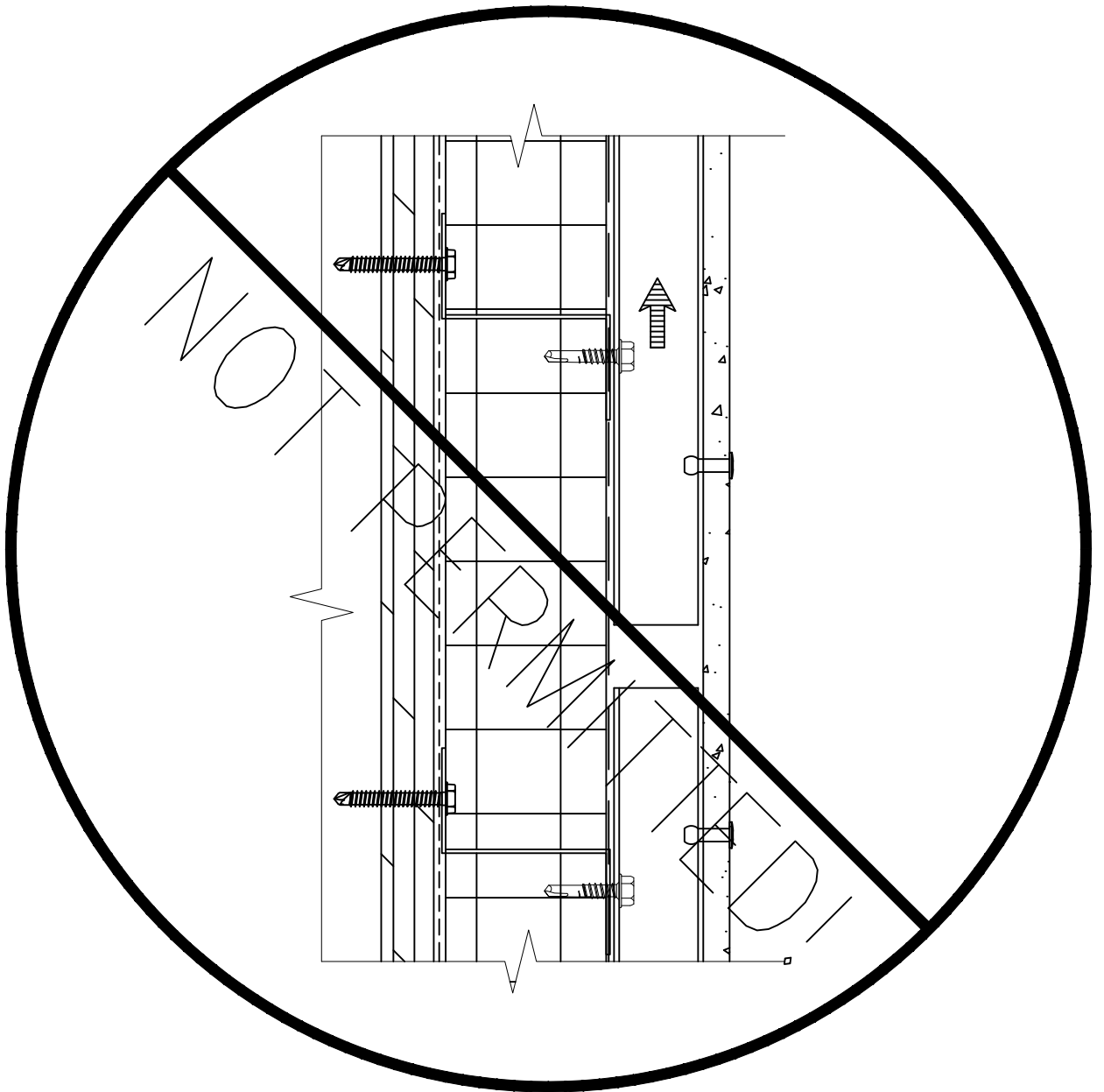
(303) 972-5107
6901 S Pierce St #180
Littleton, CO 80128

www.americanfiber cement.com

Ref.:
Horizontal Joint @
Break in Substrate

Date: 06/07/2023

Two-Layer Steel Attach System



SCALE: 6"=1'-0"

NOTES:

1. PANEL VERTICAL AND HORIZONTAL JOINT SPACING SHOULD BE 3/8" TYPICAL.

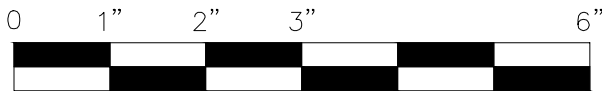
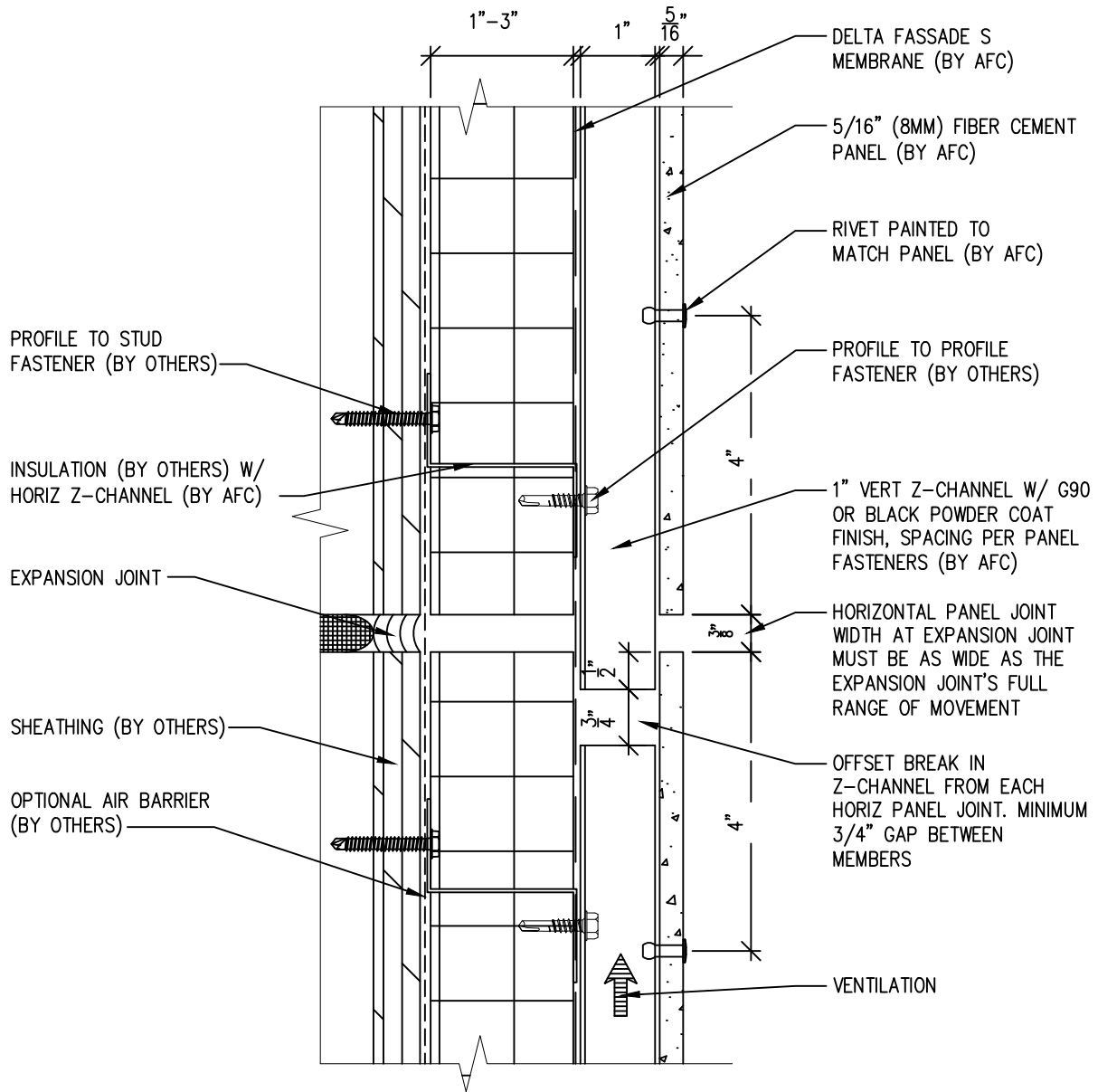


(303) 972-5107
6901 S Pierce St #180
Littleton, CO 80128
www.americanfibercement.com

Ref.:
Not Permitted @
Break in Substrate

Date: 06/07/2023

Two-Layer Steel Attach System



SCALE: 6" = 1'-0"

NOTES:

1. PANEL VERTICAL AND HORIZONTAL JOINT SPACING SHOULD BE 3/8" TYPICAL.



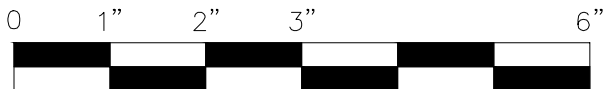
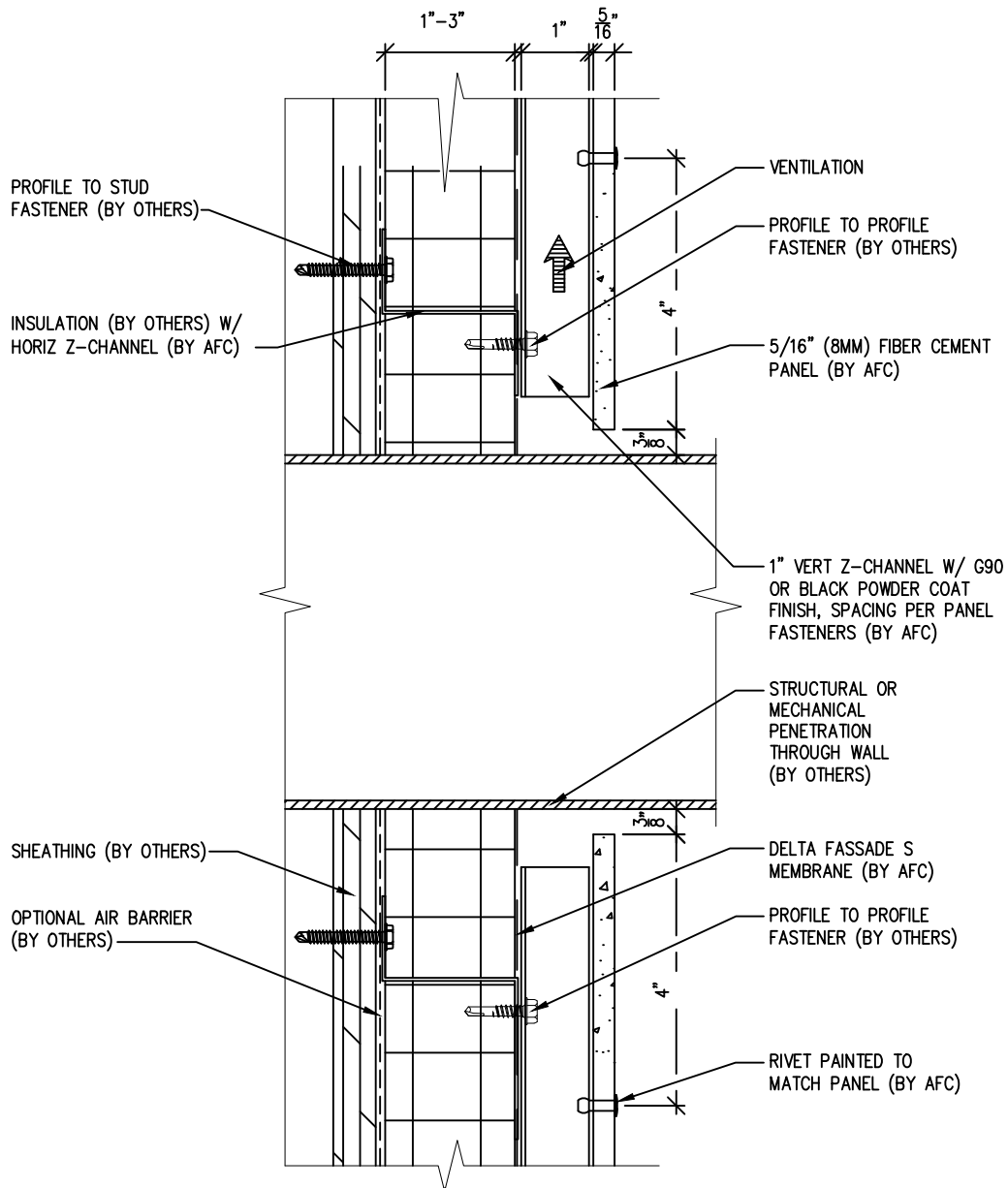
(303) 972-5107
6901 S Pierce St #180
Littleton, CO 80128

www.americanfibercement.com

Ref.:
Horizontal Joint @
Expansion Joint

Date: 06/07/2023

Two-Layer Steel Attach System-Rivets



SCALE: 6"=1'-0"

NOTES:

1. PANEL VERTICAL AND HORIZONTAL JOINT SPACING SHOULD BE 3/8" TYPICAL.

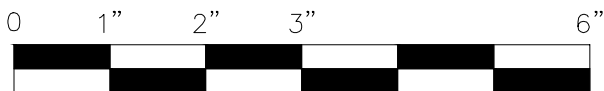
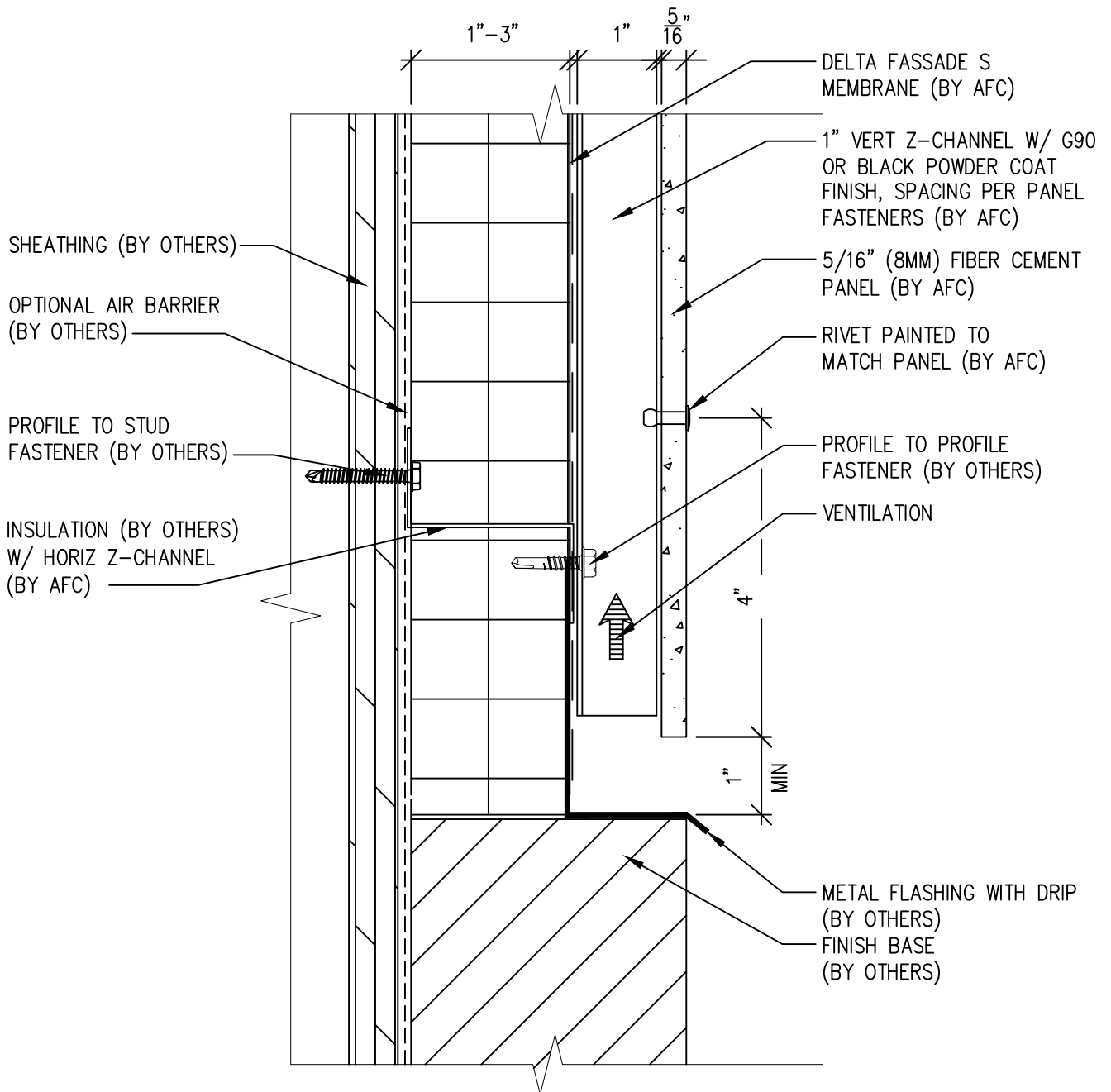


(303) 972-5107
 6901 S Pierce St #180
 Littleton, CO 80128
www.americanfibercement.com

Ref.:
 Horizontal Panel Break @
 Penetration

Date: 06/07/2023

Two-Layer Steel Attach System



SCALE: 6"=1'-0"

NOTES:

1. PANEL VERTICAL AND HORIZONTAL JOINT SPACING SHOULD BE 3/8" TYPICAL.



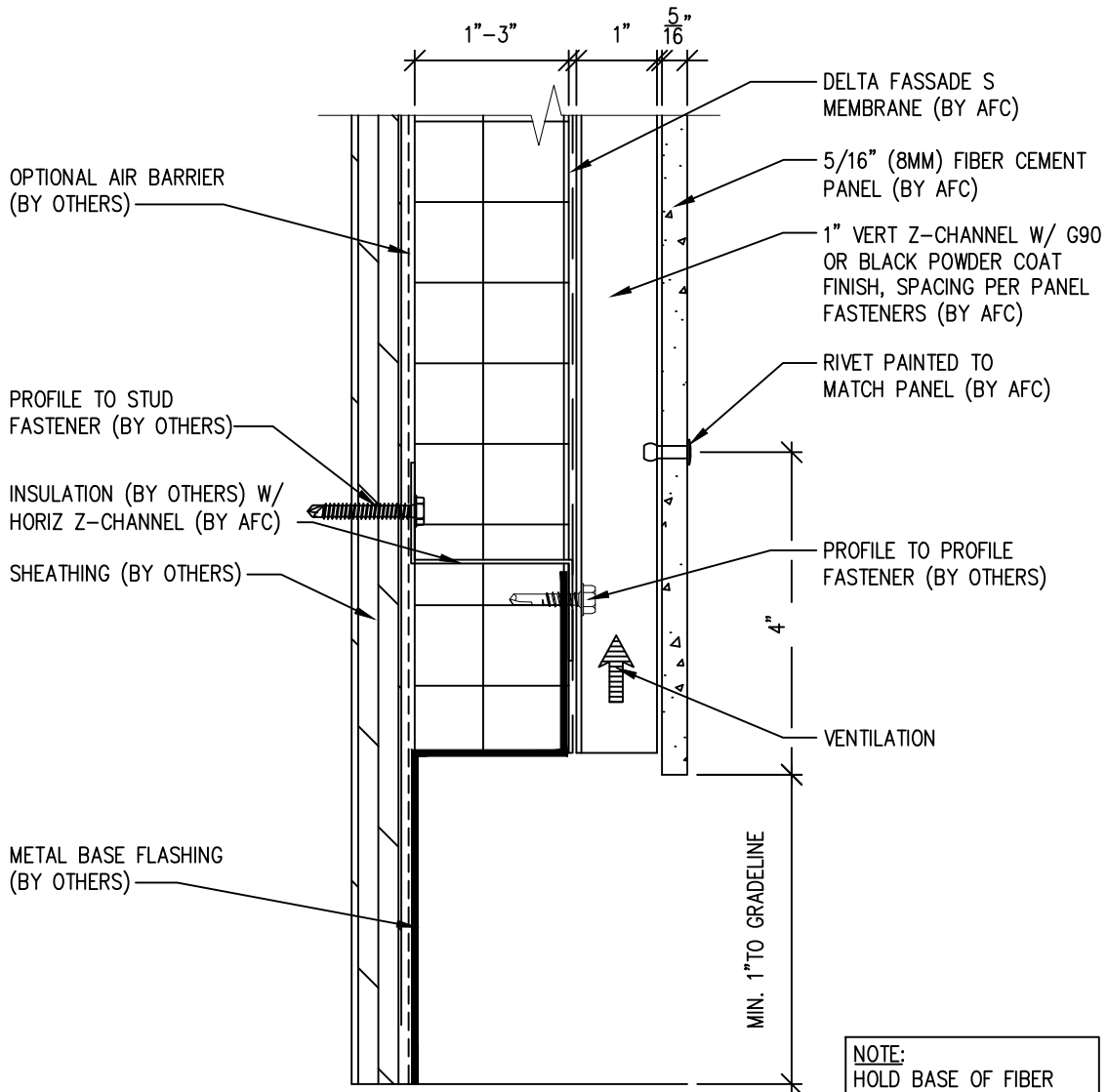
(303) 972-5107
6901 S Pierce St #180
Littleton, CO 80128

www.americanfibercement.com

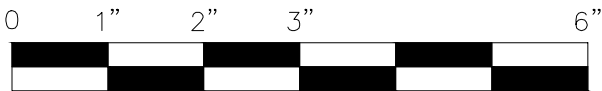
Ref.:
Bottom Panel @
Wall Base

Date: 06/07/2023

Two-Layer Steel Attach System



NOTE:
 HOLD BASE OF FIBER CEMENT PANEL 6"-12" OFF GRADE BASED ON EXPECTED SNOW BUILDUP



SCALE: 6"=1'-0"

NOTES:

1. PANEL VERTICAL AND HORIZONTAL JOINT SPACING SHOULD BE 3/8" TYPICAL.



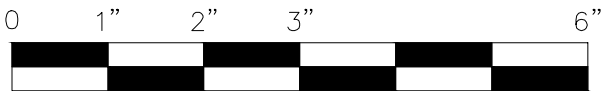
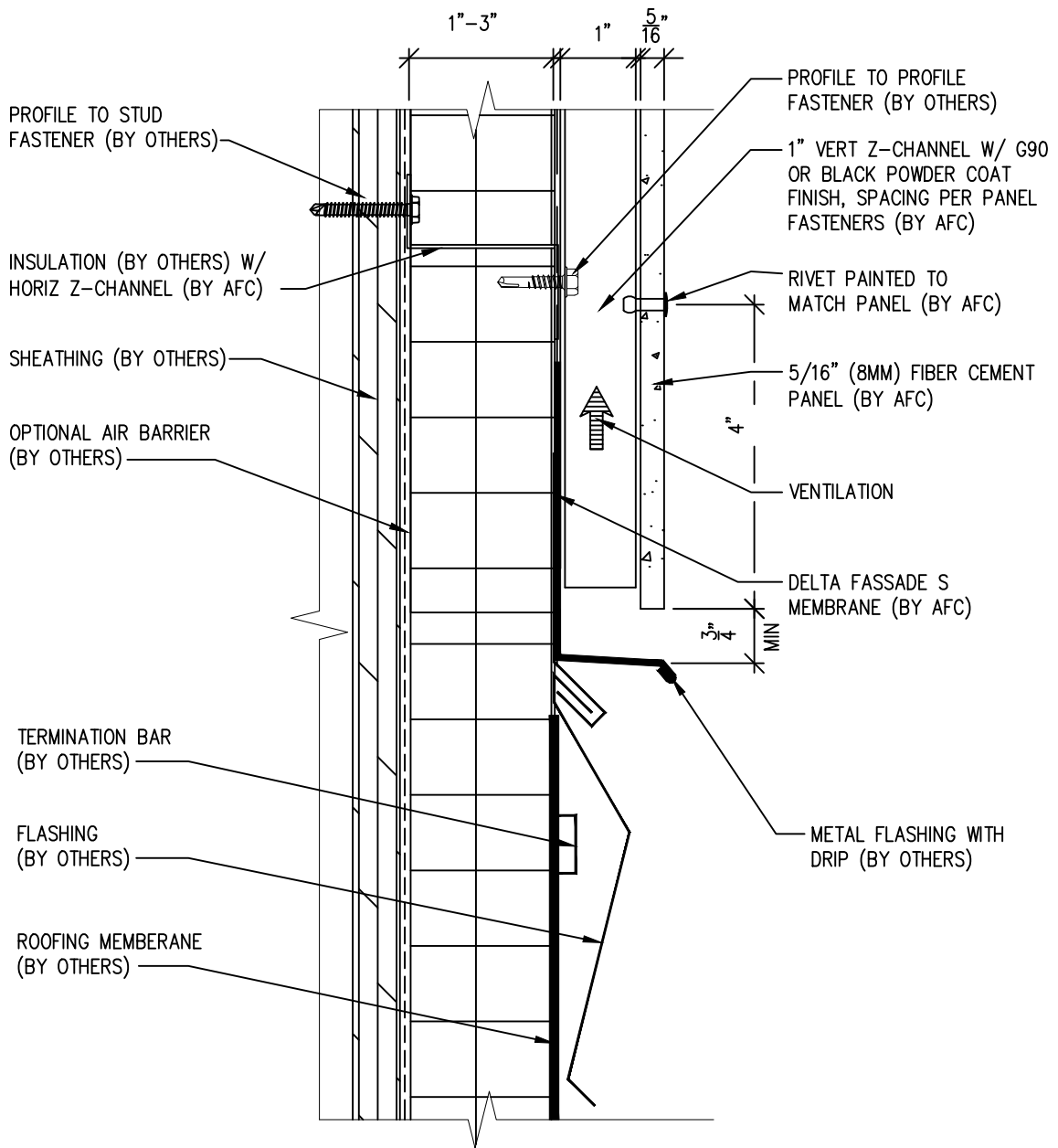
(303) 972-5107
 6901 S Pierce St #180
 Littleton, CO 80128

www.americanfibercement.com

Ref.:
 Bottom Panel @
 Open termination

Date: 06/07/2023

Two-Layer Steel Attach System



SCALE: 6"=1'-0"

NOTES:

1. PANEL VERTICAL AND HORIZONTAL JOINT SPACING SHOULD BE 3/8" TYPICAL.



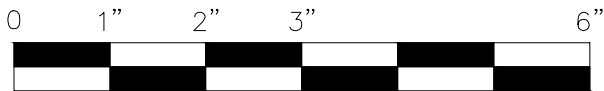
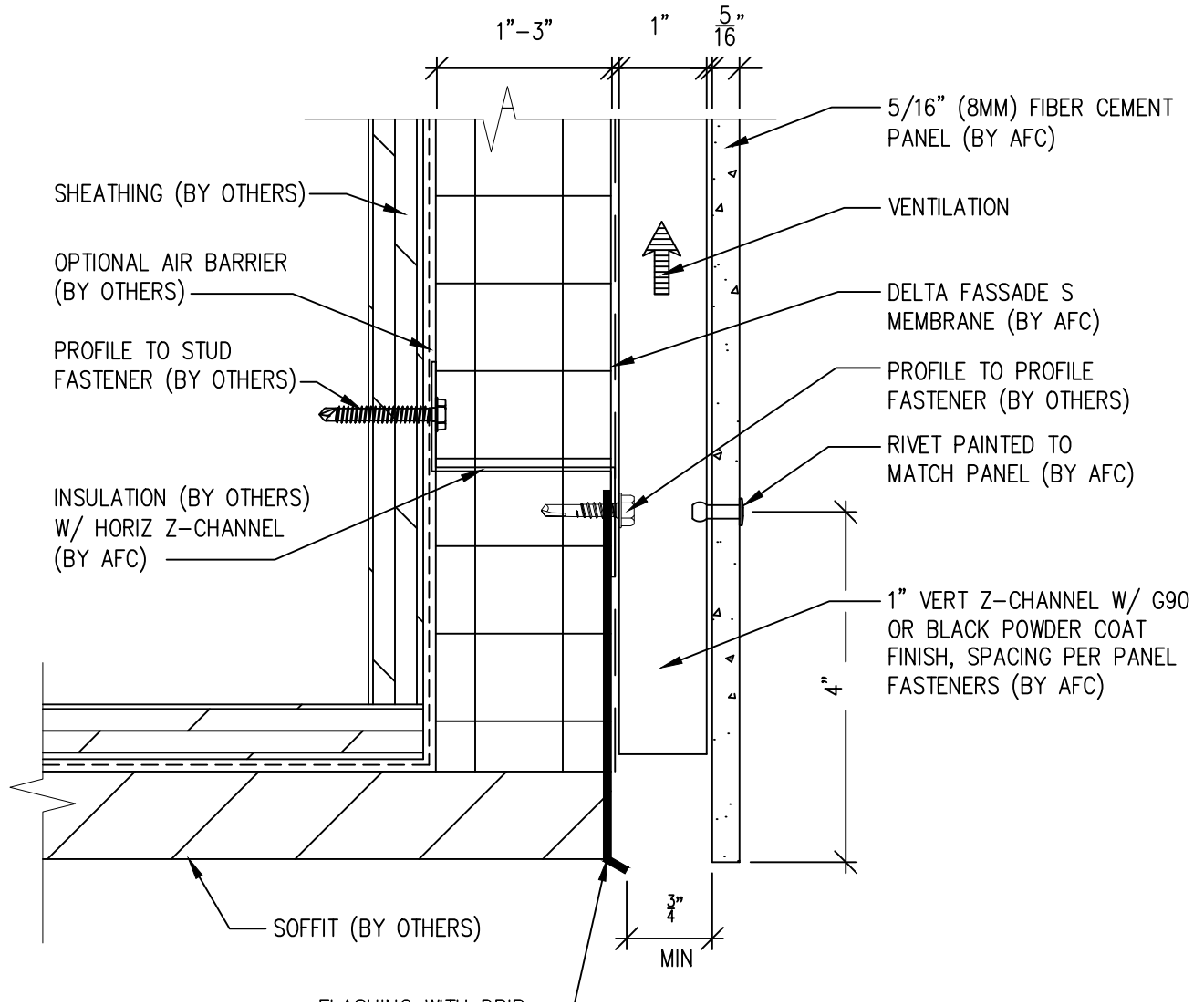
(303) 972-5107
6901 S Pierce St #180
Littleton, CO 80128

www.americanfibercement.com

Ref.:
Bottom of Panel @
Low Roof Flashing

Date: 06/07/2023

Two-Layer Steel Attach System



SCALE: 6"=1'-0"

NOTES:

1. PANEL VERTICAL AND HORIZONTAL JOINT SPACING SHOULD BE 3/8" TYPICAL.

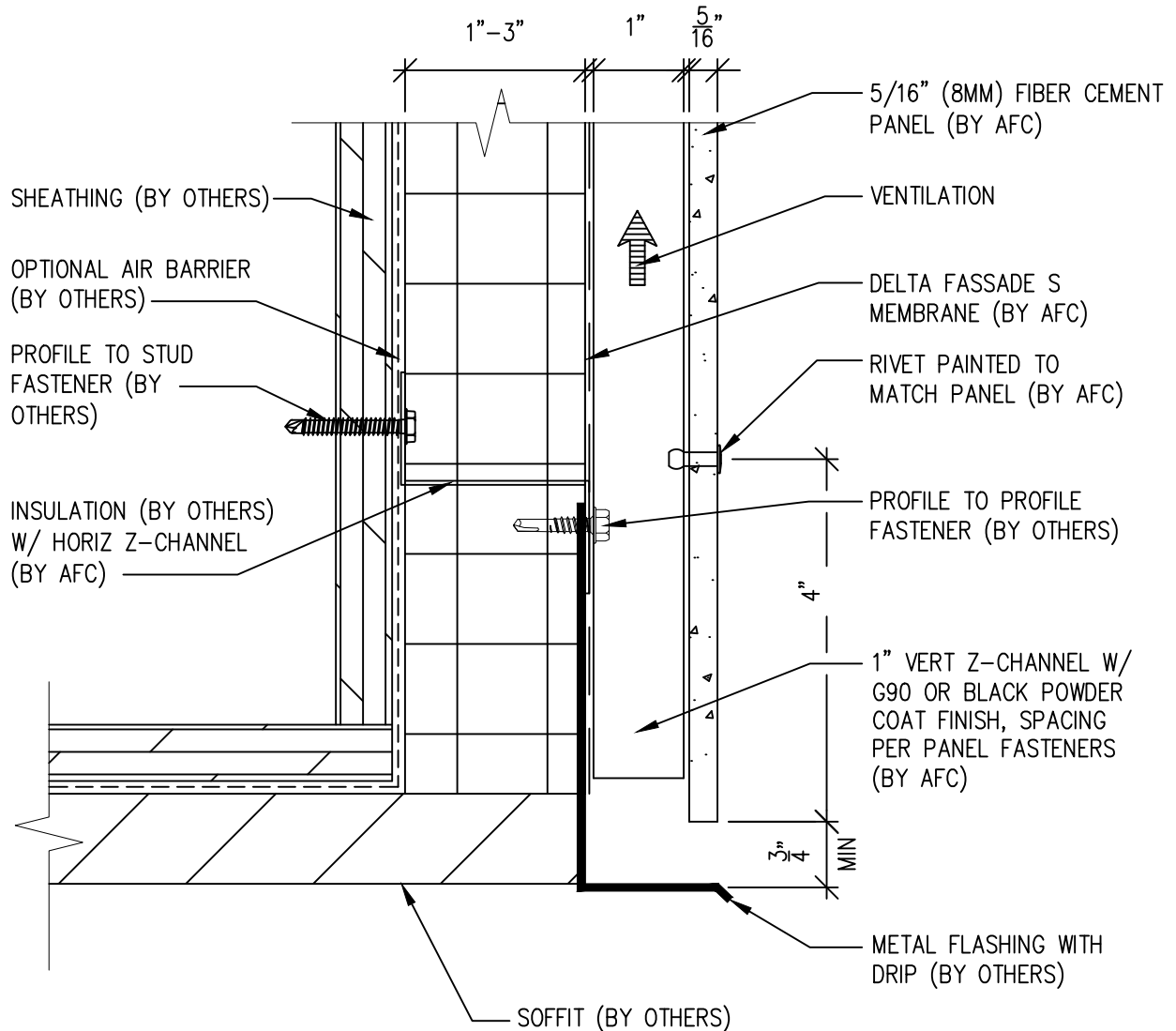


(303) 972-5107
 6901 S Pierce St #180
 Littleton, CO 80128
www.americanfibercement.com

Ref.:
 Bottom of Panel @
 Soffit

Date: 06/07/2023

Two-Layer Steel Attach System



SCALE: 6"=1'-0"

NOTES:

1. PANEL VERTICAL AND HORIZONTAL JOINT SPACING SHOULD BE 3/8" TYPICAL.

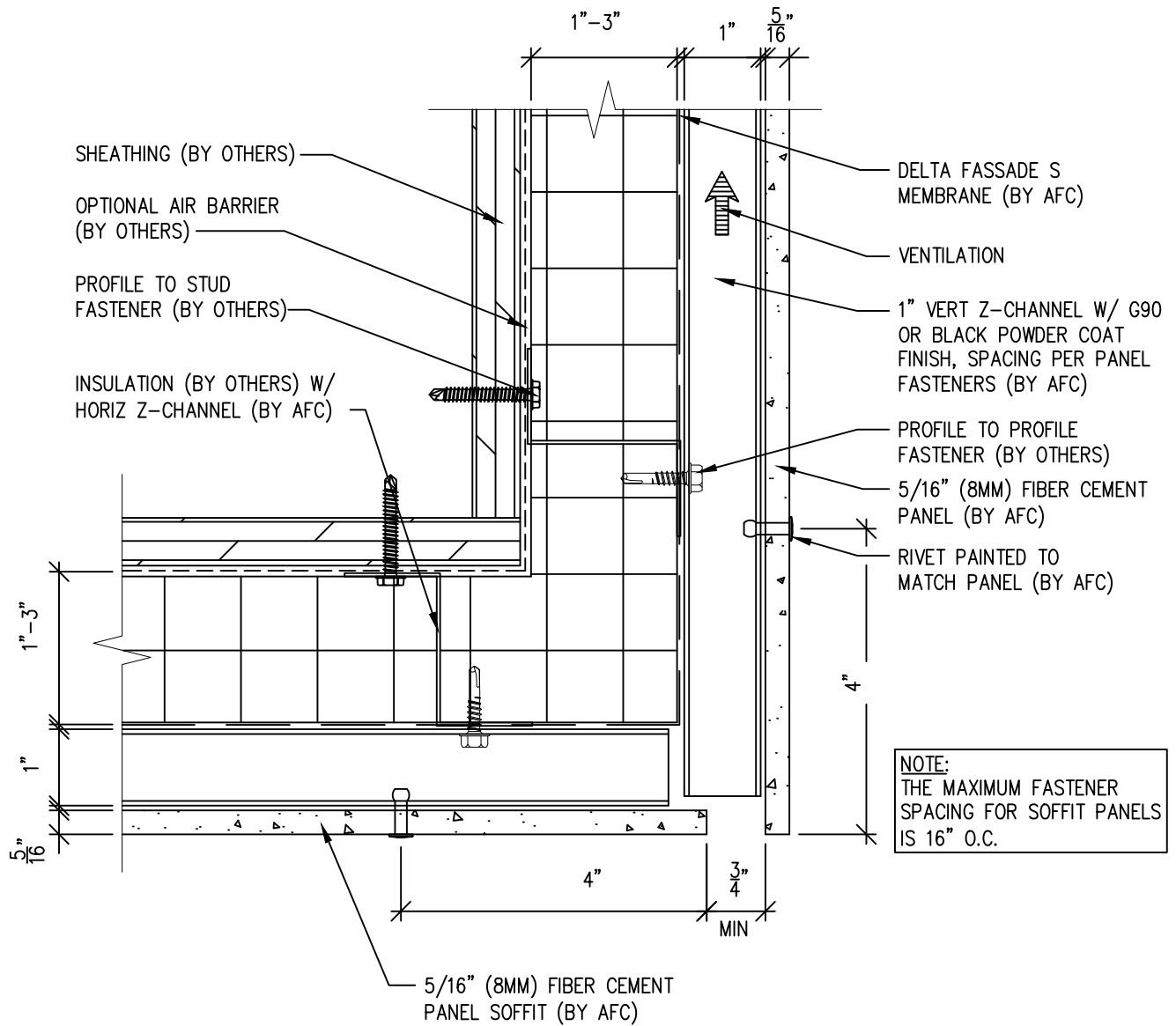


(303) 972-5107
 6901 S Pierce St #180
 Littleton, CO 80128
www.americanfibercement.com

Ref.:
 Bottom of Panel @
 Soffit(Alternate)

Date: 06/07/2023

Two-Layer Steel Attach System



SCALE: 6"=1'-0"

NOTES:

1. PANEL VERTICAL AND HORIZONTAL JOINT SPACING SHOULD BE 3/8" TYPICAL.

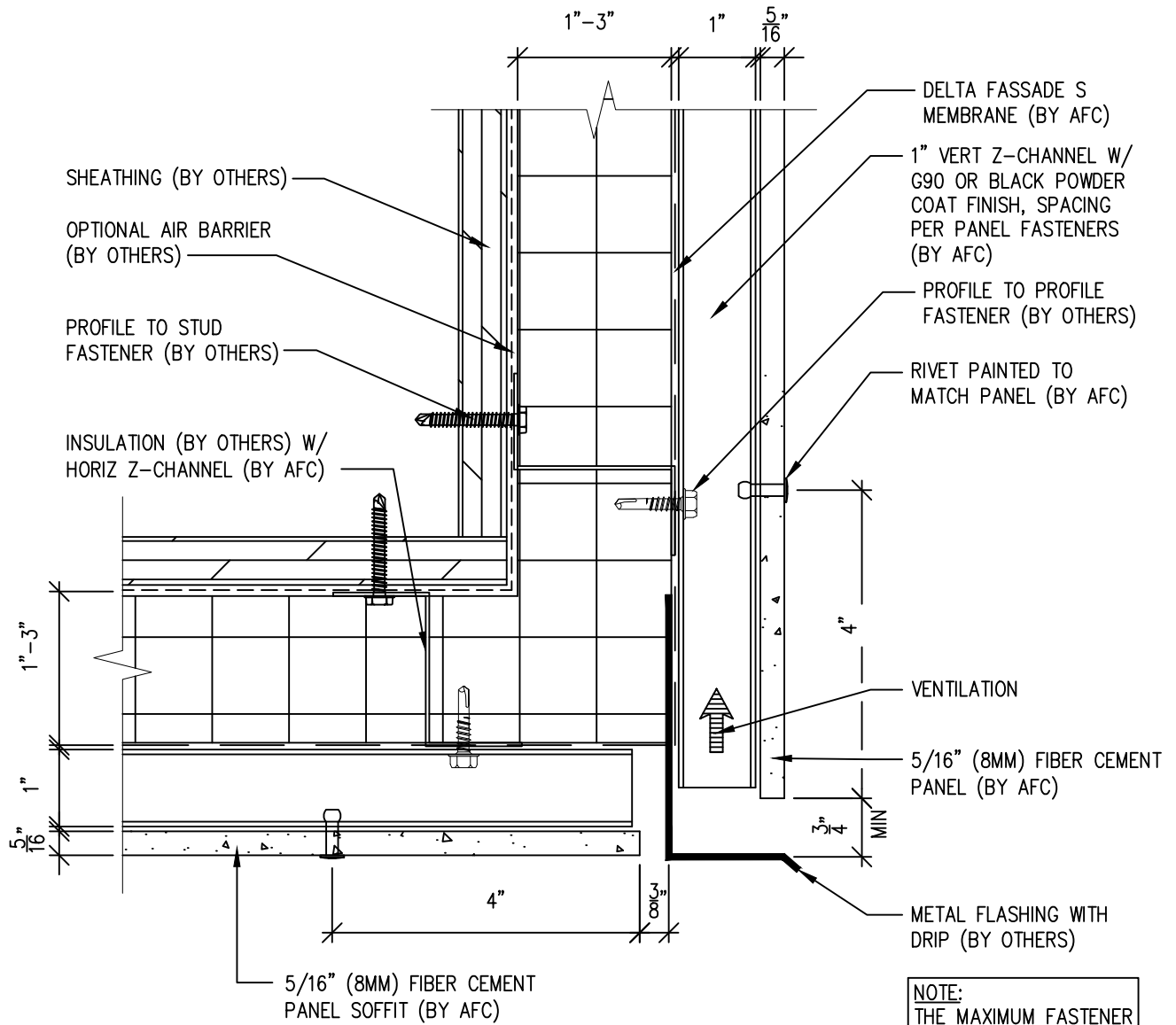


(303) 972-5107
 6901 S Pierce St #180
 Littleton, CO 80128
www.americanfibercement.com

Ref.:
 Bottom of Panel @
 F.C.P Soffit

Date: 06/07/2023

Two-Layer Steel Attach System



NOTE:
THE MAXIMUM FASTENER SPACING FOR SOFFIT PANELS IS 16" O.C.



SCALE: 6"=1'-0"

NOTES:

1. PANEL VERTICAL AND HORIZONTAL JOINT SPACING SHOULD BE 3/8" TYPICAL.



(303) 972-5107
6901 S Pierce St #180
Littleton, CO 80128

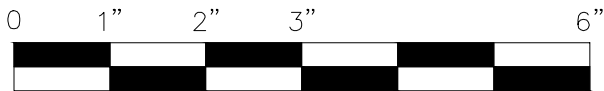
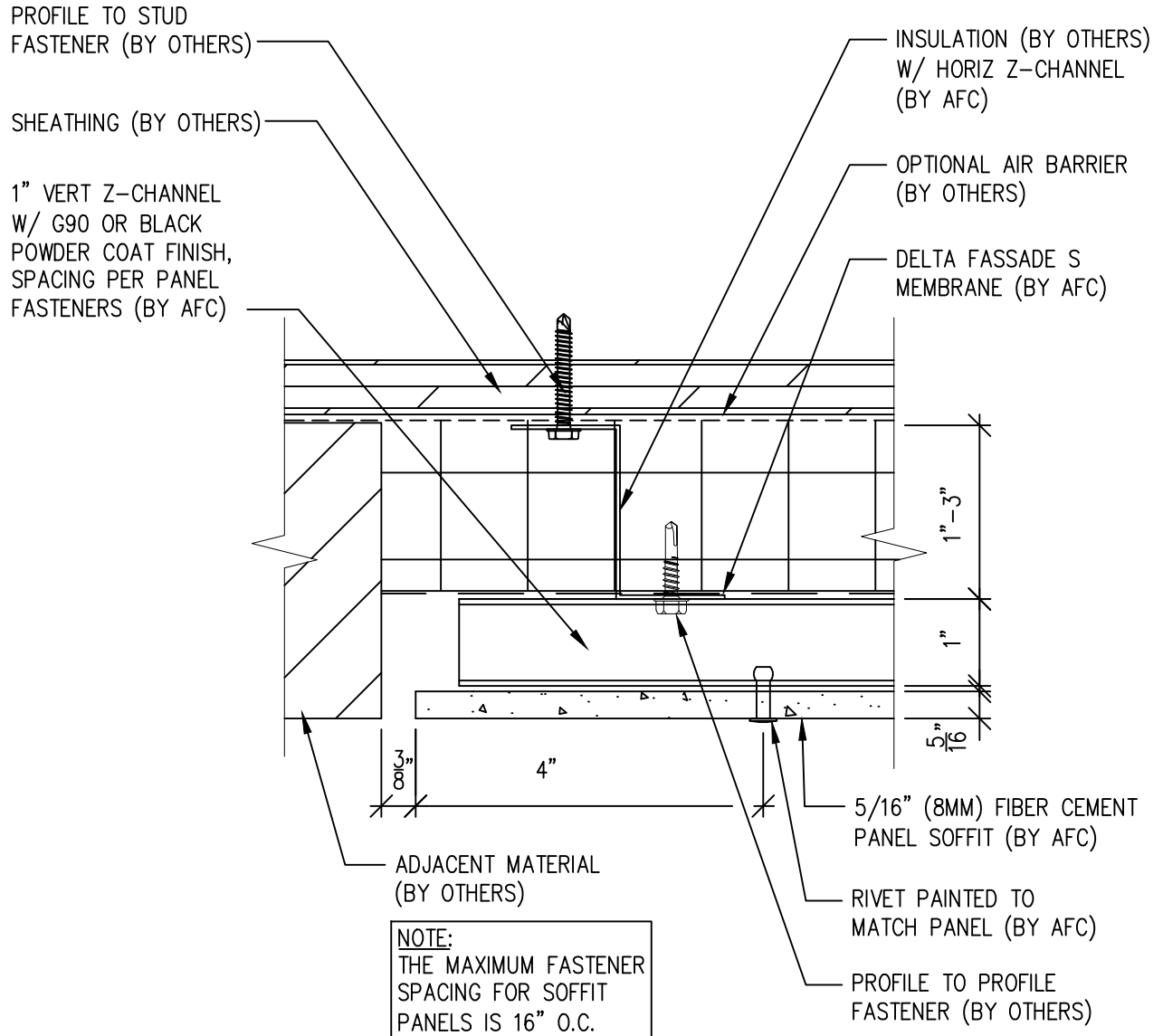
www.americanfibercement.com

Ref.:

Bottom of Panel @
F.C.P Soffit(Alternate)

Date: 06/07/2023

Two-Layer Steel Attach System



SCALE: 6" = 1'-0"

NOTES:

1. PANEL VERTICAL AND HORIZONTAL JOINT SPACING SHOULD BE 3/8" TYPICAL.



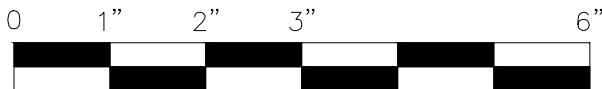
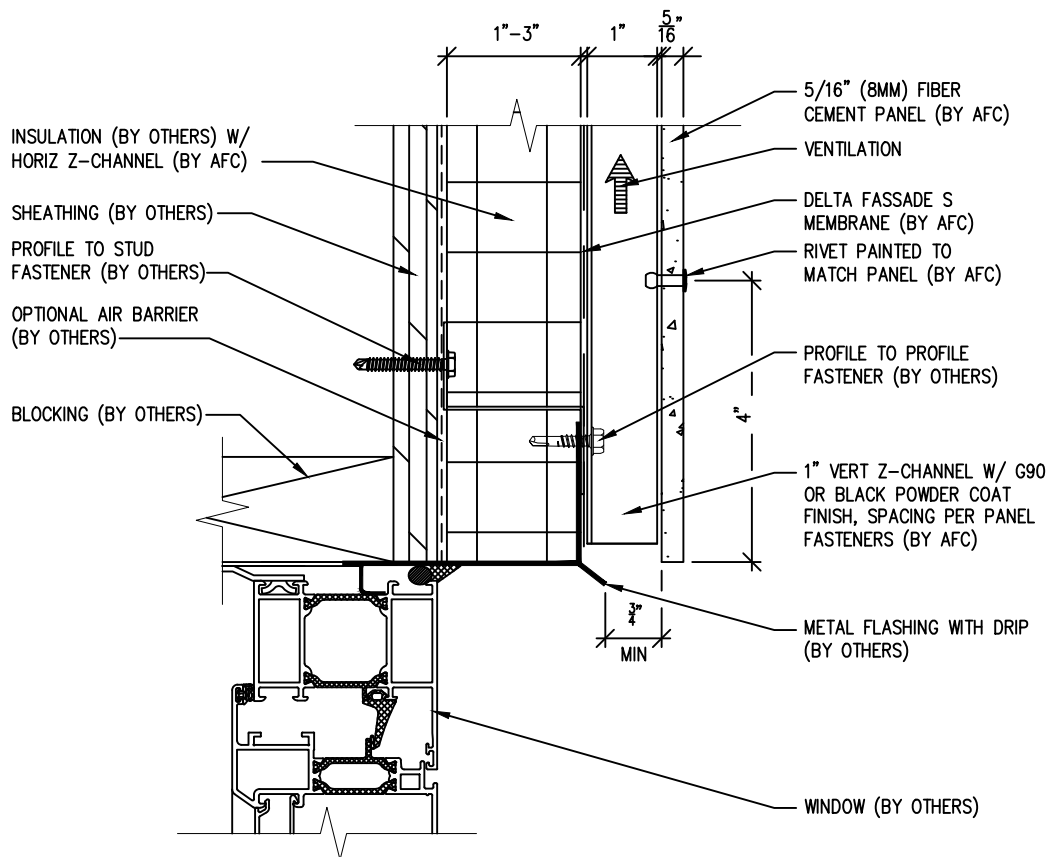
(303) 972-5107
6901 S Pierce St #180
Littleton, CO 80128

www.americanfibercement.com

Ref.:
Soffit Termination @
Adjacent Material

Date: 06/07/2023

Two-Layer Steel Attach System-Rivets



SCALE: 6"=1'-0"

NOTES:

1. PANEL VERTICAL AND HORIZONTAL JOINT SPACING SHOULD BE 3/8" TYPICAL.

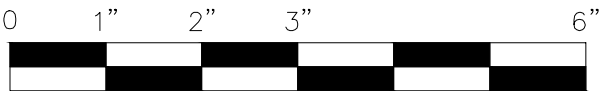
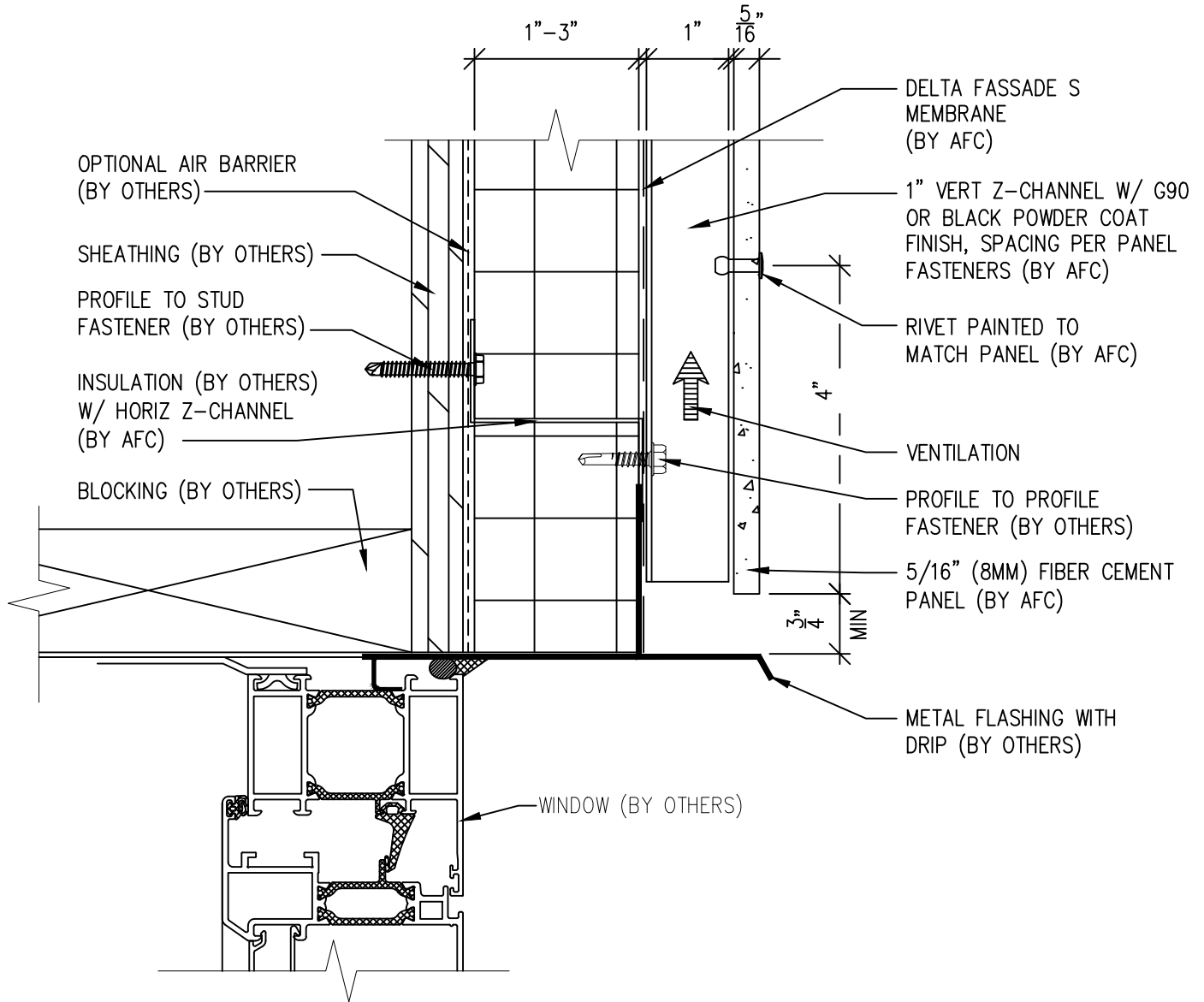


(303) 972-5107
6901 S Pierce St #180
Littleton, CO 80128
www.americanfibercement.com

Ref.:
Bottom Panel @
Window Head

Date: 06/07/2023

Two-Layer Steel Attach System



SCALE: 6"=1'-0"

NOTES:

1. PANEL VERTICAL AND HORIZONTAL JOINT SPACING SHOULD BE 3/8" TYPICAL.

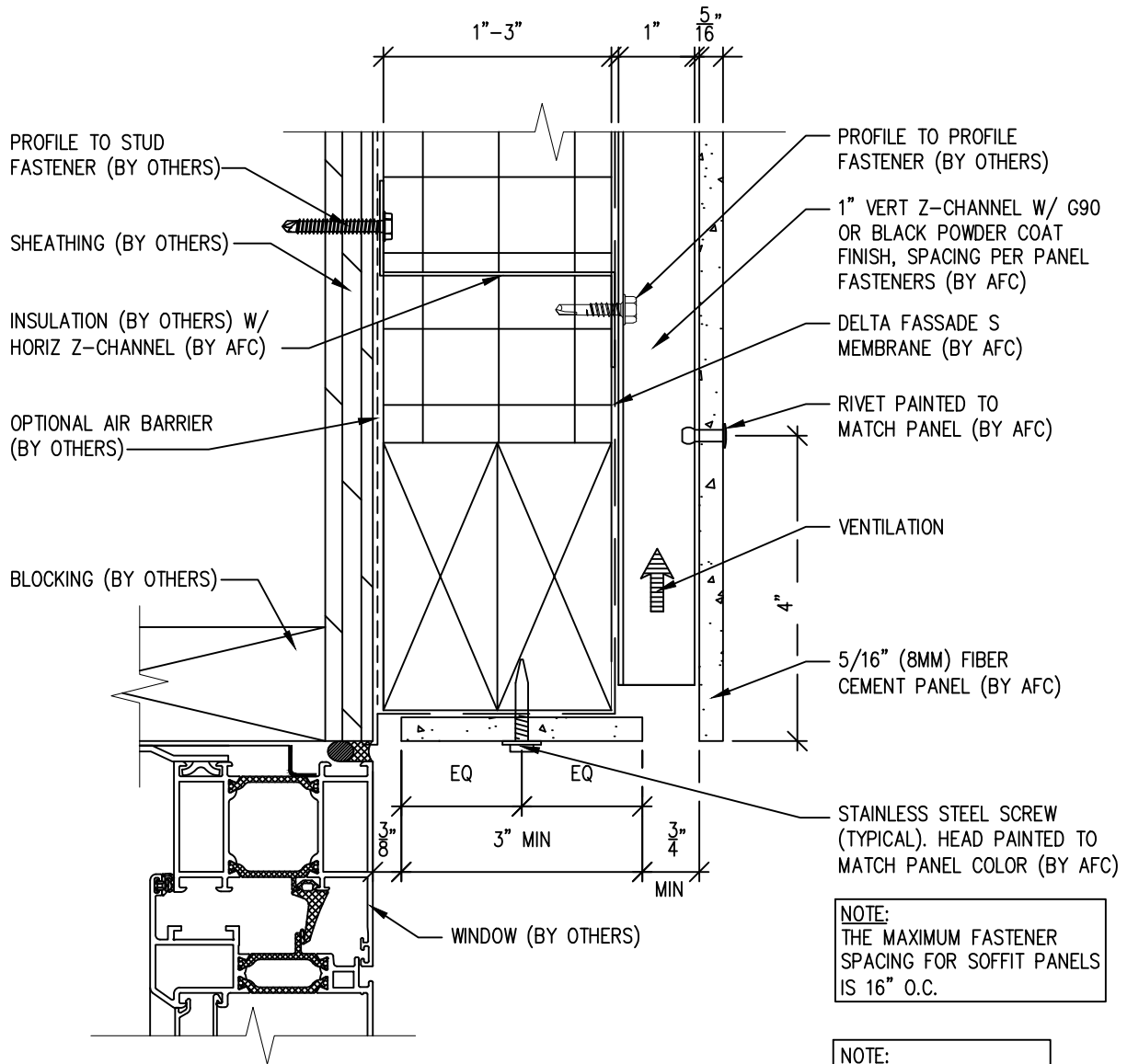


(303) 972-5107
 6901 S Pierce St #180
 Littleton, CO 80128
www.americanfibercement.com

Ref.:
 Bottom Panel @
 Window Head (Alternate)

Date: 06/07/2023

Two-Layer Steel Attach System



NOTE:
THE MAXIMUM FASTENER SPACING FOR SOFFIT PANELS IS 16" O.C.

NOTE:
IF FIBER CEMENT HEAD RETURN PANELS ARE LESS THAN 3" WIDE, ADHESIVE ATTACHMENT WILL BE REQUIRED.



SCALE: 6"=1'-0"

NOTES:

1. PANEL VERTICAL AND HORIZONTAL JOINT SPACING SHOULD BE 3/8" TYPICAL.

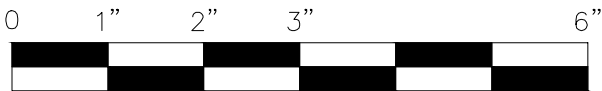
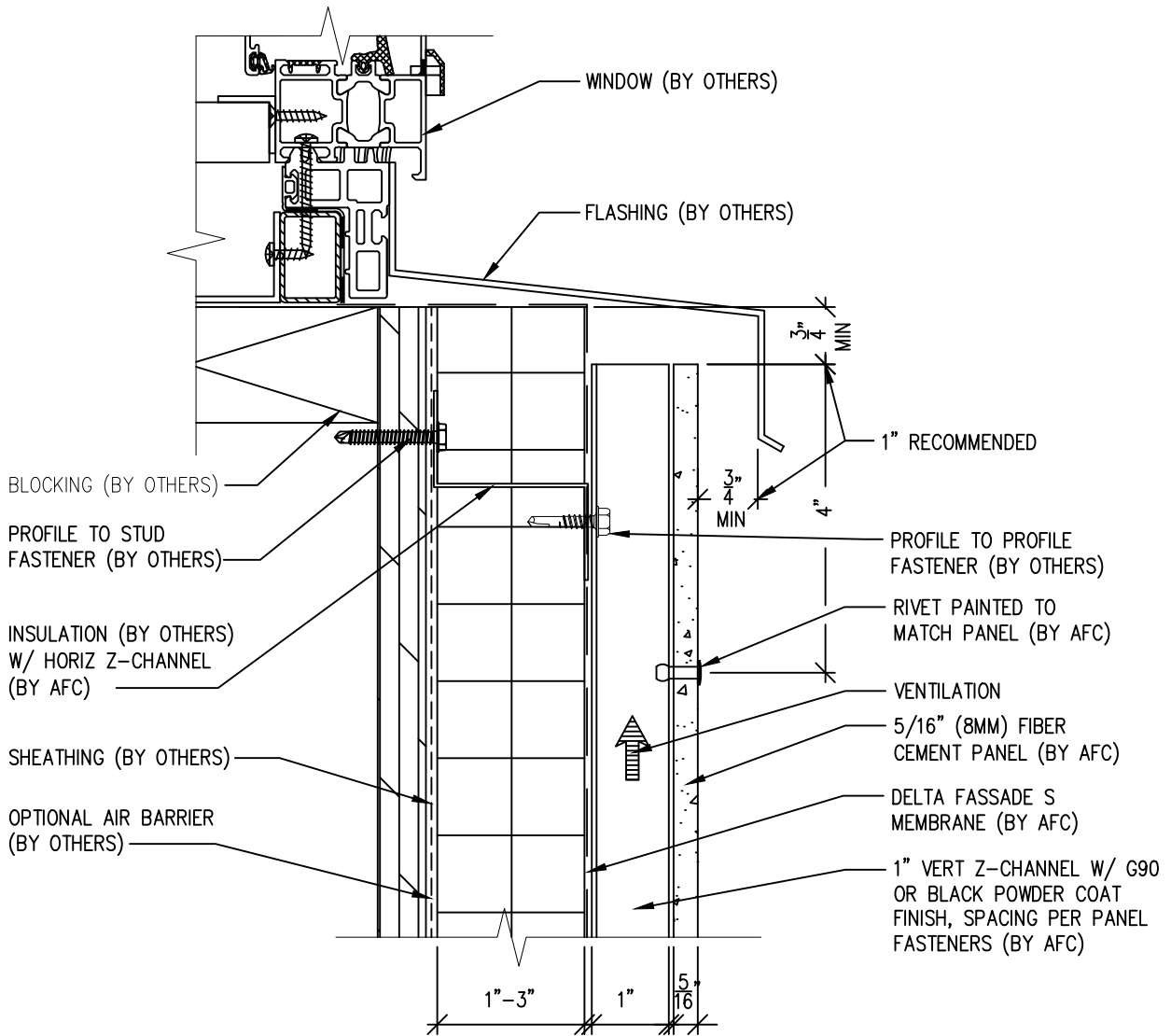


(303) 972-5107
 6901 S Pierce St #180
 Littleton, CO 80128
www.americanfibercement.com

Ref.:
 F.C.P Return @
 Window

Date: 06/07/2023

Two-Layer Steel Attach System



SCALE: 6"=1'-0"

NOTES:

1. PANEL VERTICAL AND HORIZONTAL JOINT SPACING SHOULD BE 3/8" TYPICAL.



(303) 972-5107
6901 S Pierce St #180
Littleton, CO 80128

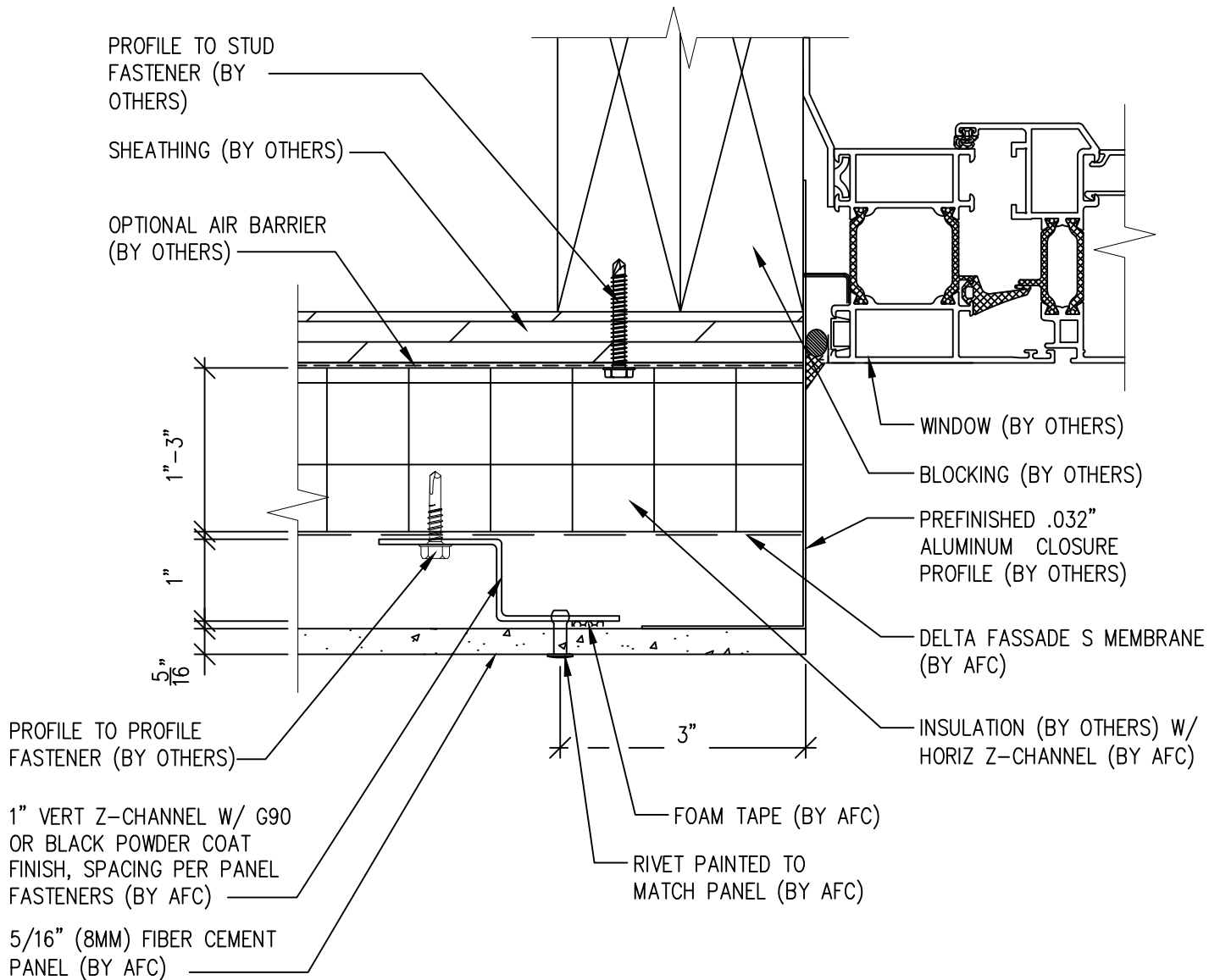
www.americanfibercement.com

Ref.:

Top of Panel @
Window Sill

Date: 06/07/2023

Two-Layer Steel Attach System



SCALE: 6"=1'-0"

NOTES:

1. PANEL VERTICAL AND HORIZONTAL JOINT SPACING SHOULD BE 3/8" TYPICAL.



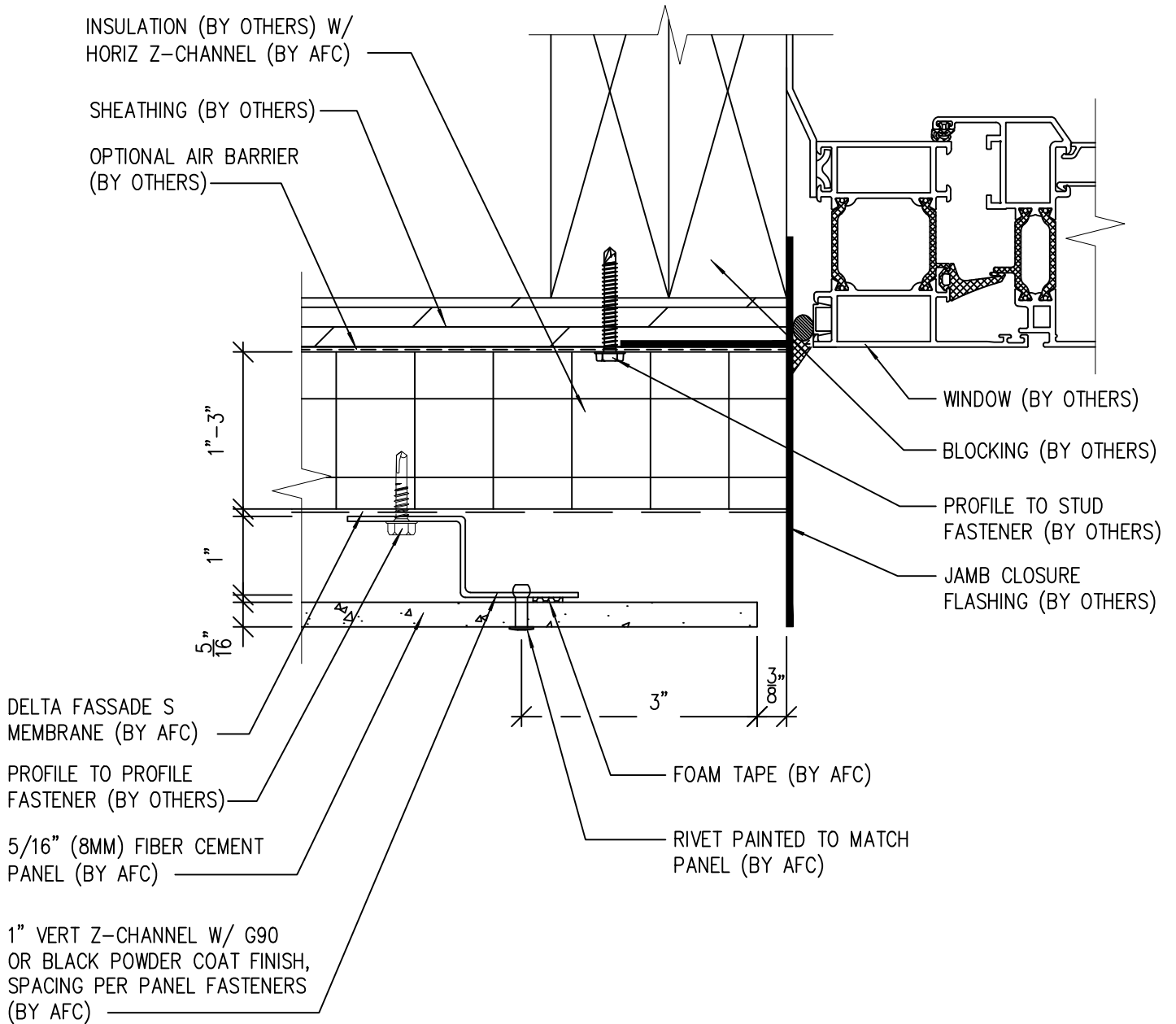
(303) 972-5107
6901 S Pierce St #180
Littleton, CO 80128

www.americanfiber cement.com

Ref.:
Panel Edge @
Window Jamb

Date: 06/07/2023

Two-Layer Steel Attach System



SCALE: 6"=1'-0"

NOTES:

1. PANEL VERTICAL AND HORIZONTAL JOINT SPACING SHOULD BE 3/8" TYPICAL.

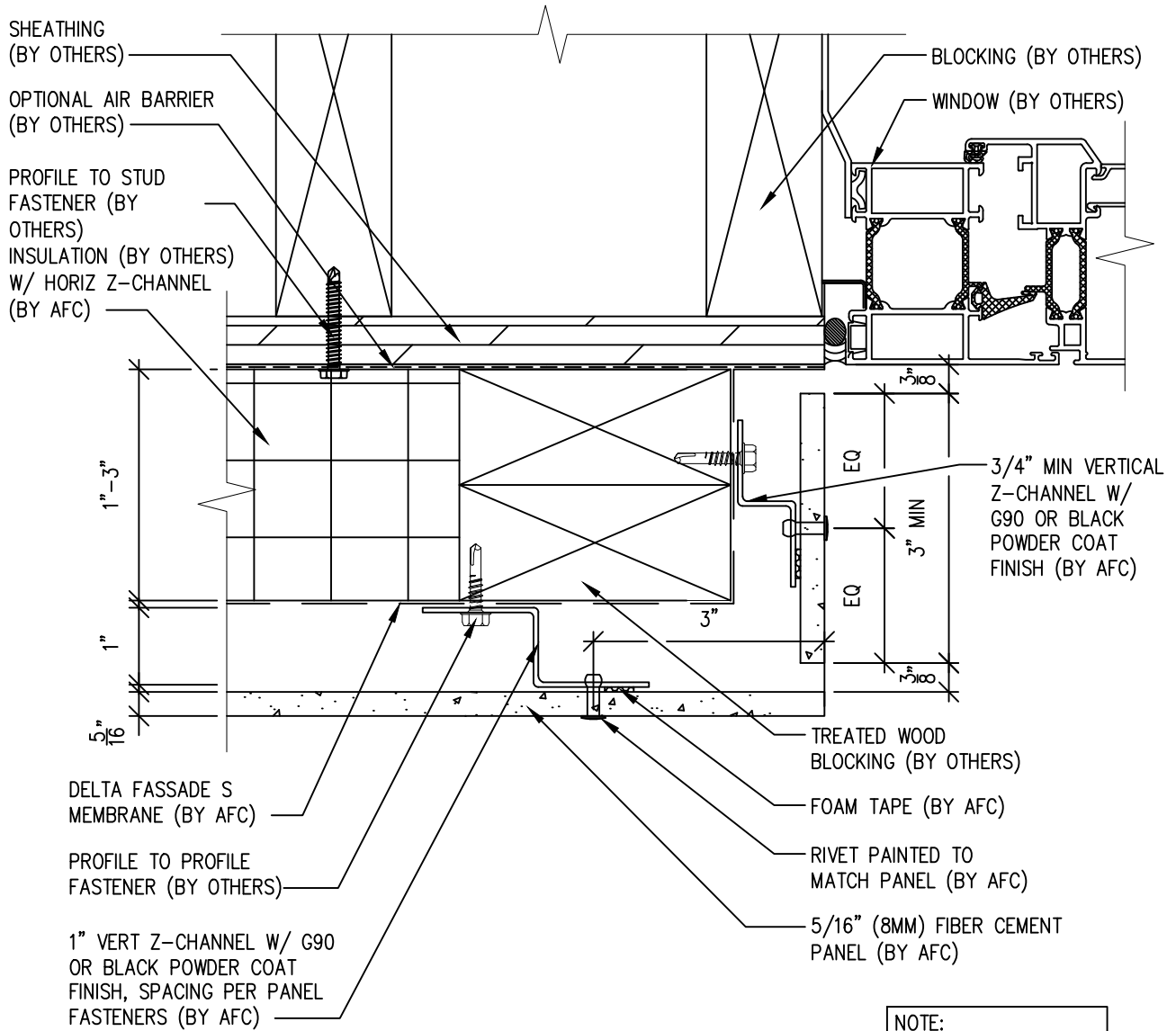


(303) 972-5107
 6901 S Pierce St #180
 Littleton, CO 80128
www.americanfibercement.com

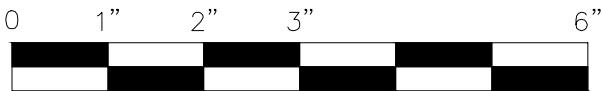
Ref.:
 Panel Edge @
 Window Jamb(Alternate)

Date: 06/07/2023

Two-Layer Steel Attach System



NOTE:
IF FIBER CEMENT
RETURN PANELS ARE
LESS THAN 3\"/>



SCALE: 6"=1'-0"

NOTES:

1. PANEL VERTICAL AND HORIZONTAL JOINT SPACING SHOULD BE 3/8" TYPICAL.

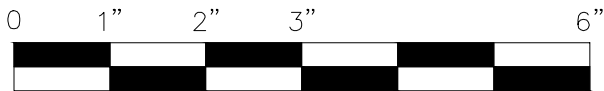
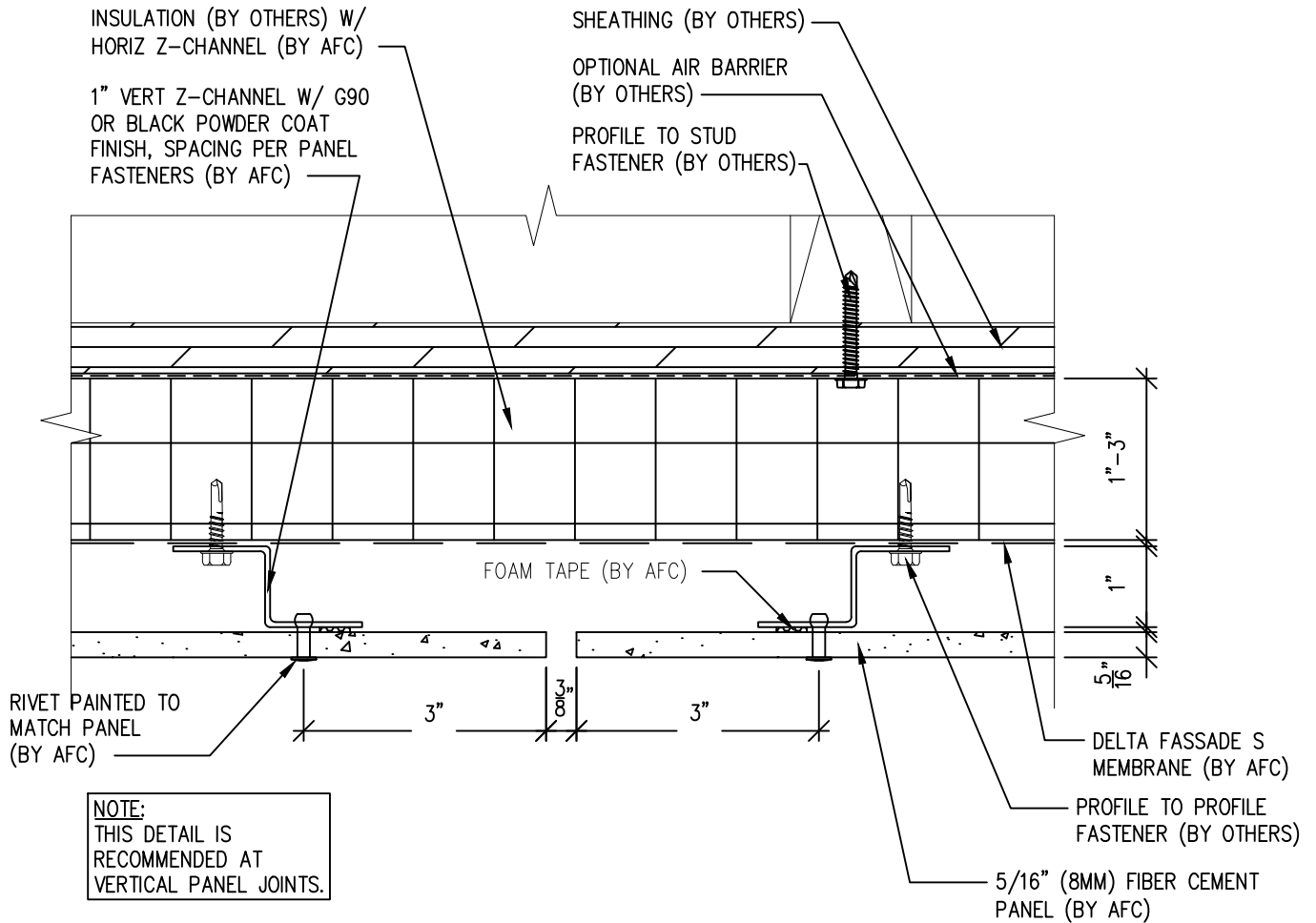


(303) 972-5107
6901 S Pierce St #180
Littleton, CO 80128
www.americanfiber cement.com

Ref.:
F.C.P Return @
Window Jamb

Date: 06/07/2023

Two-Layer Steel Attach System



SCALE: 6"=1'-0"

NOTES:

1. PANEL VERTICAL AND HORIZONTAL JOINT SPACING SHOULD BE 3/8" TYPICAL.



(303) 972-5107
6901 S Pierce St #180
Littleton, CO 80128
www.americanfibercement.com

Ref.:
Vertical Panel Joint
Option 1

Date: 06/07/2023

Two-Layer Steel Attach System

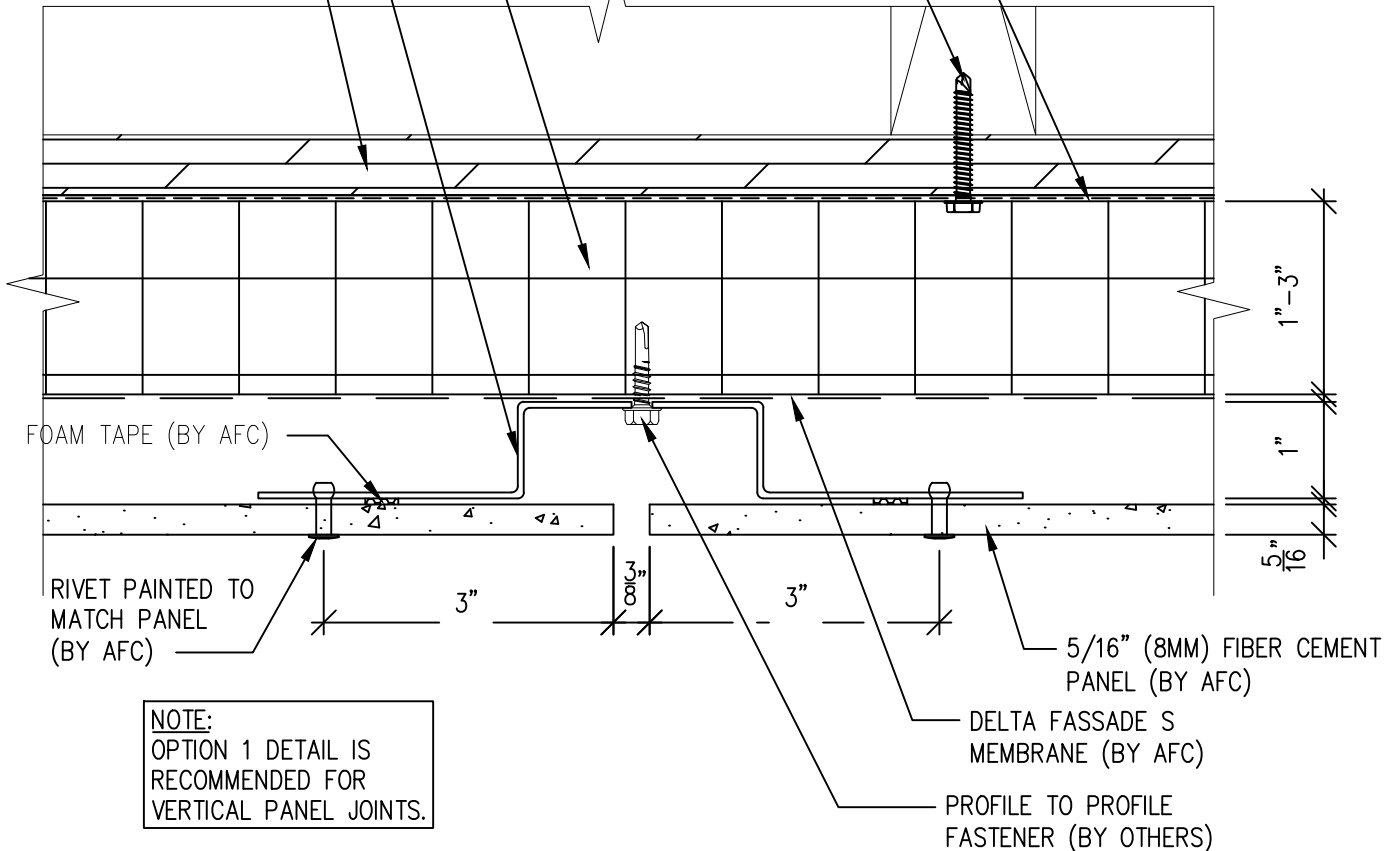
INSULATION (BY OTHERS) W/
HORIZ Z-CHANNEL (BY AFC)

1" VERT HAT-CHANNEL W/
G90 OR BLACK POWDER COAT
FINISH, SPACING PER PANEL
FASTENERS (BY OTHERS)

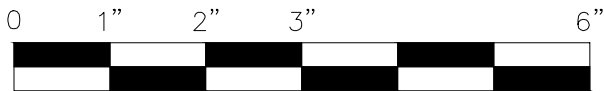
SHEATHING (BY OTHERS)

OPTIONAL AIR BARRIER
(BY OTHERS)

PROFILE TO STUD
FASTENER (BY OTHERS)



NOTE:
OPTION 1 DETAIL IS
RECOMMENDED FOR
VERTICAL PANEL JOINTS.



SCALE: 6"=1'-0"

NOTES:

1. PANEL VERTICAL AND HORIZONTAL JOINT SPACING SHOULD BE 3/8" TYPICAL.



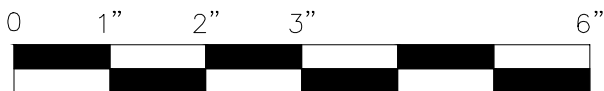
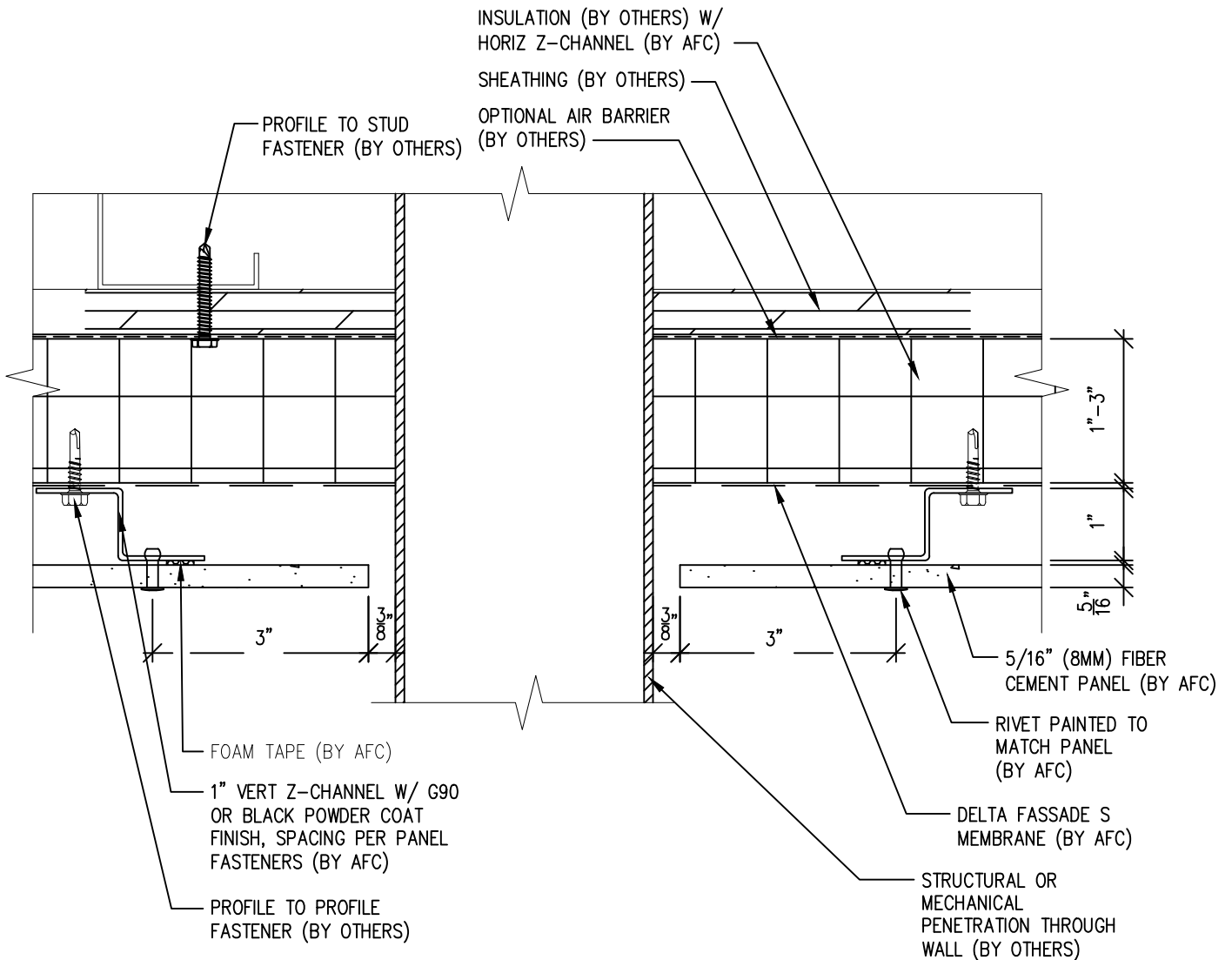
(303) 972-5107
6901 S Pierce St #180
Littleton, CO 80128

www.americanfibercement.com

Ref.:
Vertical Panel joint
Option 2

Date: 06/07/2023

Two-Layer Steel Attach System



SCALE: 6"=1'-0"

NOTES:

1. PANEL VERTICAL AND HORIZONTAL JOINT SPACING SHOULD BE 3/8" TYPICAL.

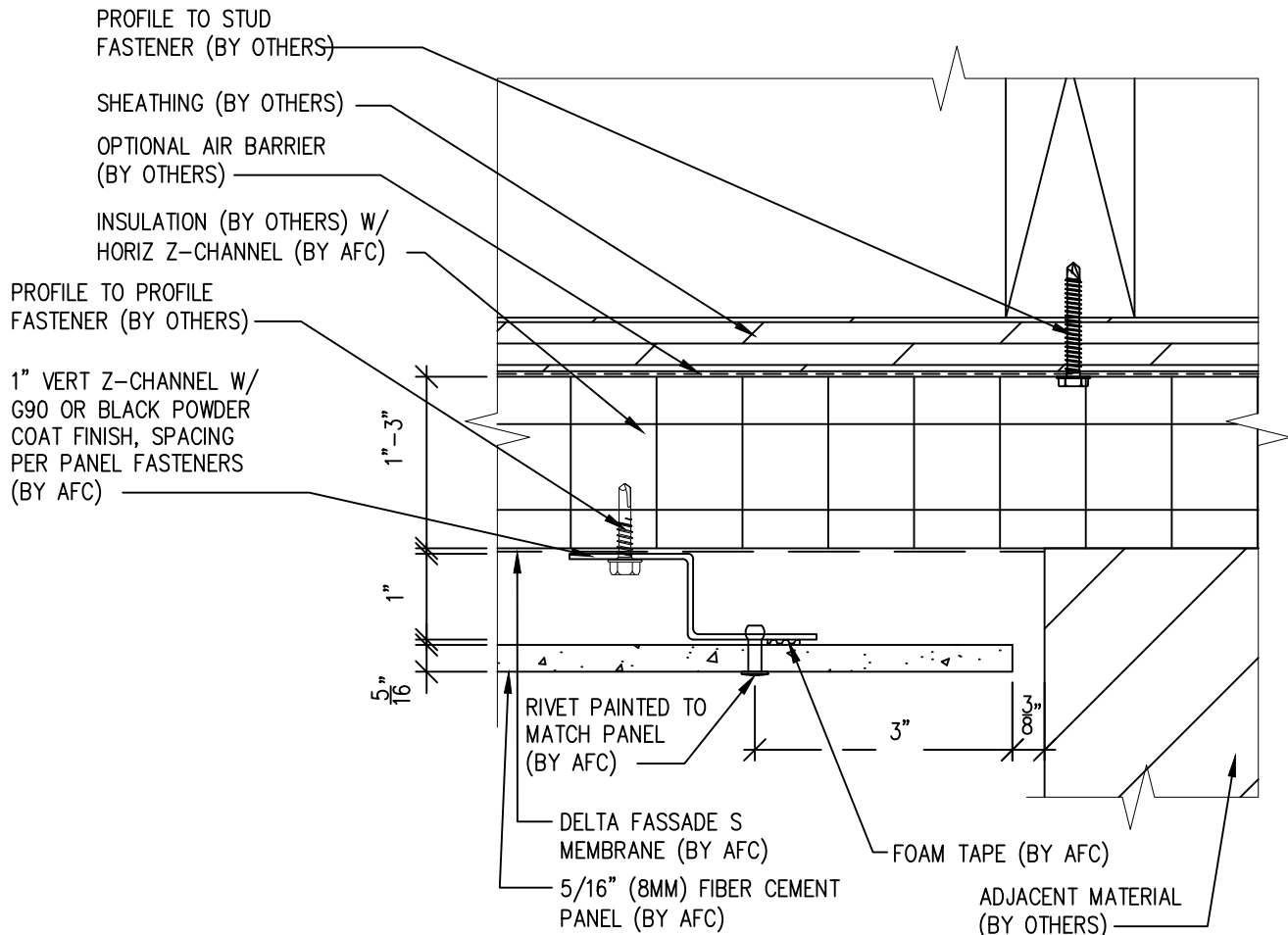


(303) 972-5107
 6901 S Pierce St #180
 Littleton, CO 80128
www.americanfibercement.com

Ref.:
 Vertical Panel Break @
 Penetration

Date: 06/07/2023

Two-Layer Steel Attach System



SCALE: 6" = 1'-0"

NOTES:

1. PANEL VERTICAL AND HORIZONTAL JOINT SPACING SHOULD BE 3/8" TYPICAL.

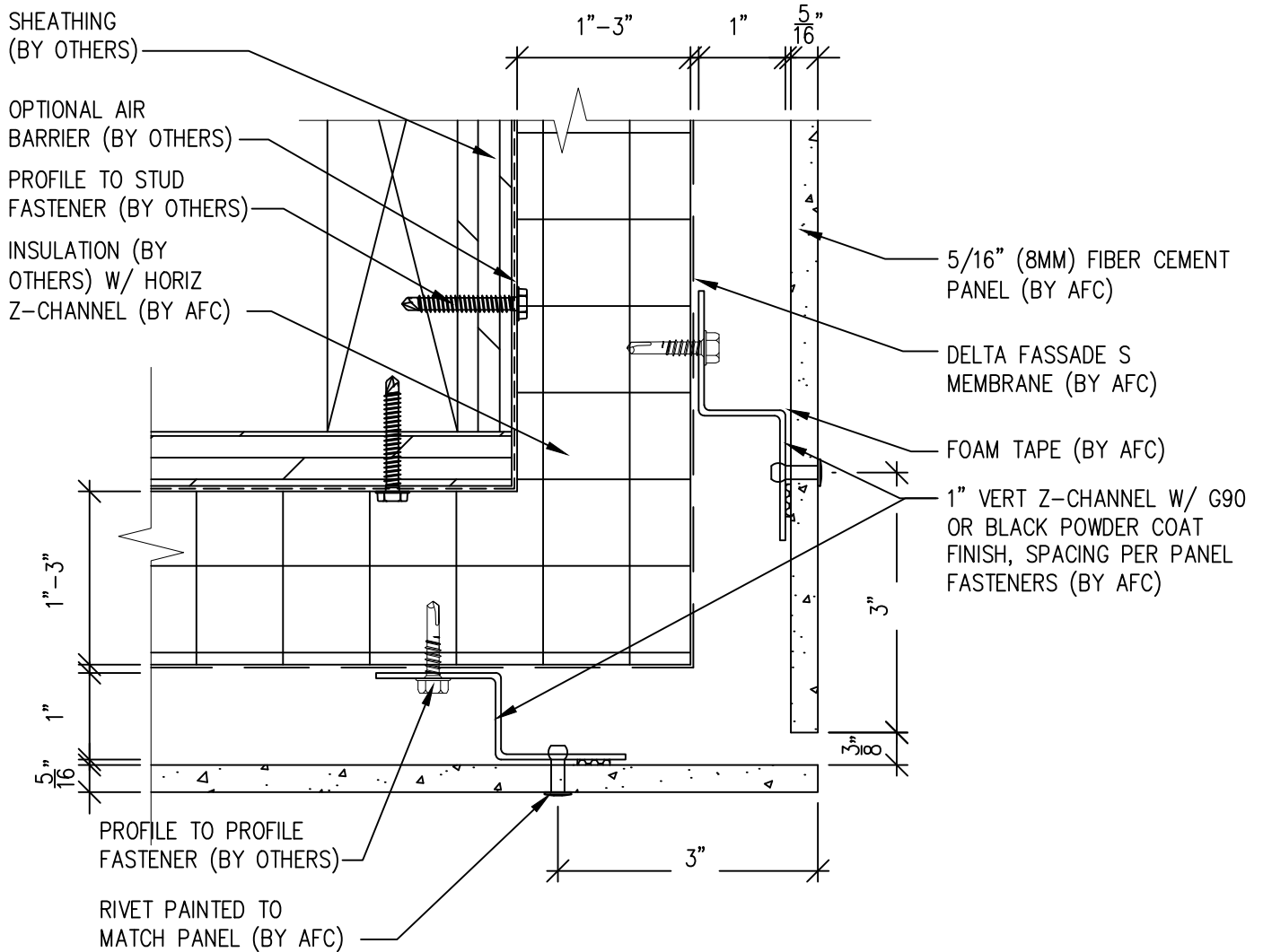


(303) 972-5107
 6901 S Pierce St #180
 Littleton, CO 80128
www.americanfiber cement.com

Ref.:
 Panel Edge @
 Butt Joint

Date: 06/07/2023

Two-Layer Steel Attach System



SCALE: 6"=1'-0"

NOTES:

1. PANEL VERTICAL AND HORIZONTAL JOINT SPACING SHOULD BE 3/8" TYPICAL.



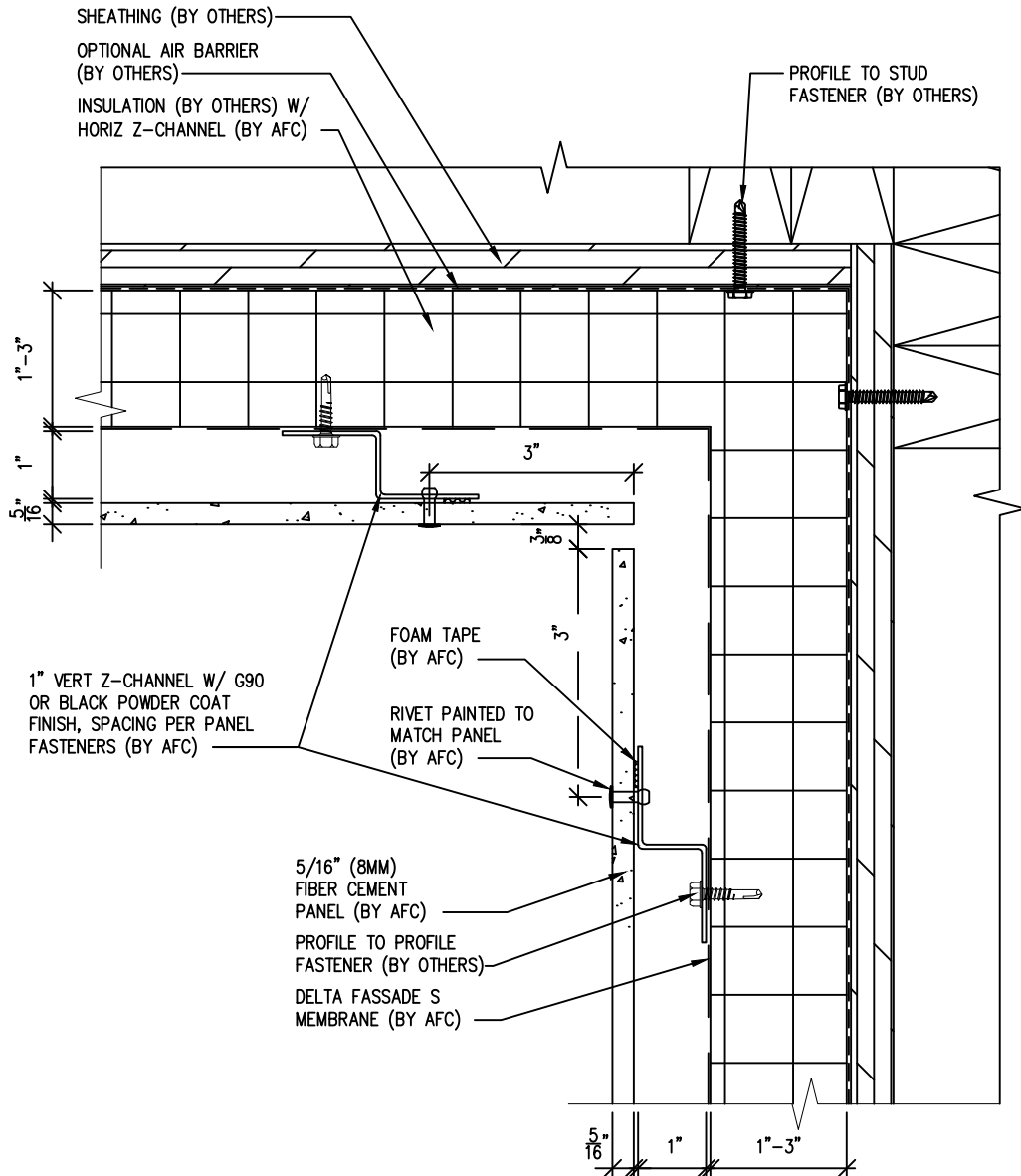
(303) 972-5107
6901 S Pierce St #180
Littleton, CO 80128

www.americanfiber cement.com

Ref.:
Panels @
Outside Corner

Date: 06/07/2023

Two-Layer Steel Attach System



SCALE: 6"=1'-0"

NOTES:

1. PANEL VERTICAL AND HORIZONTAL JOINT SPACING SHOULD BE 3/8" TYPICAL.

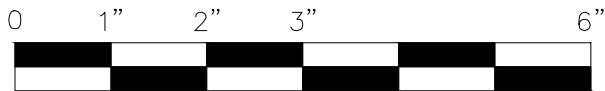
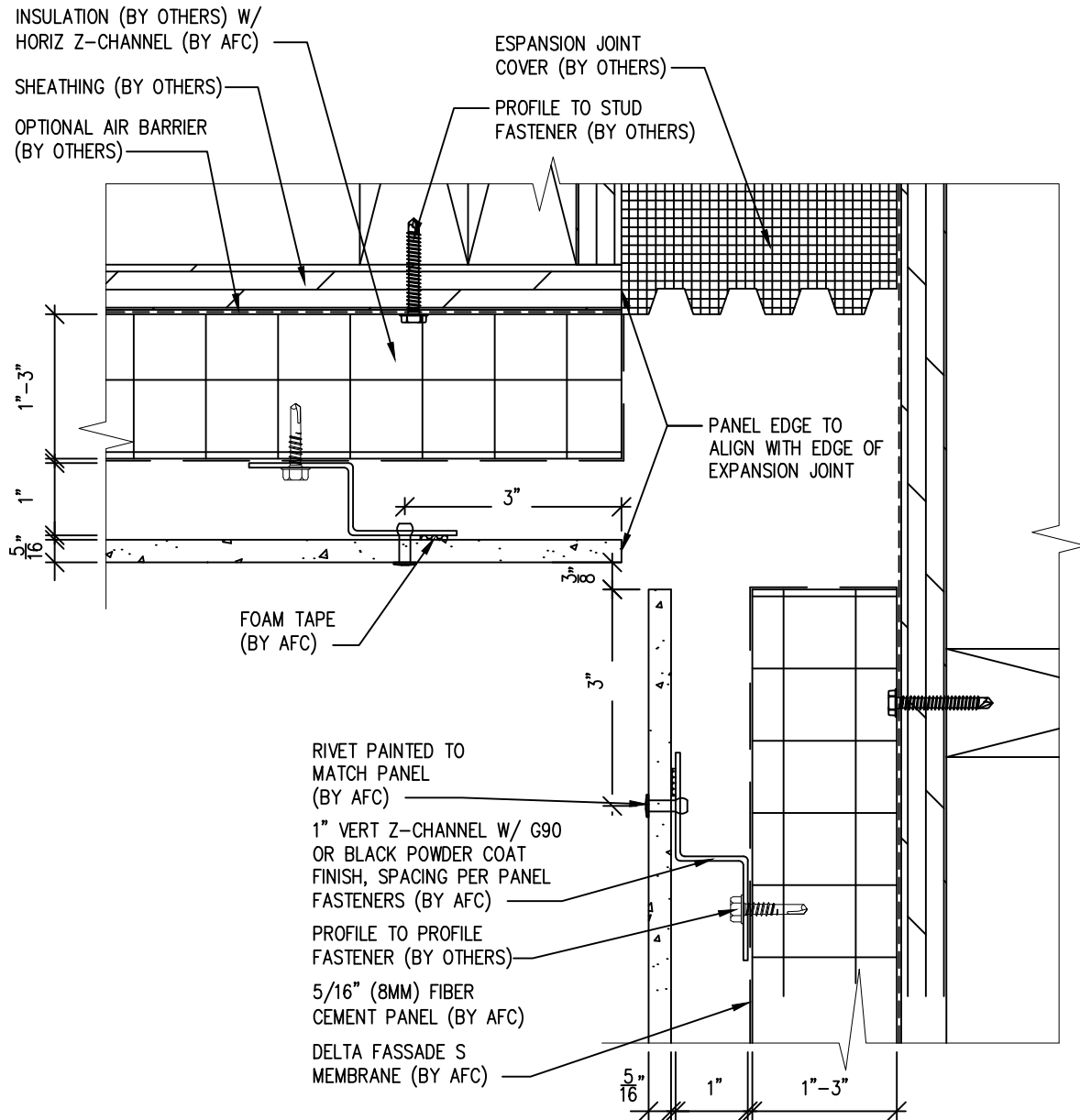


(303) 972-5107
 6901 S Pierce St #180
 Littleton, CO 80128
www.americanfibercement.com

Ref.:
 Panels @
 Inside Corner

Date: 06/07/2023

Two-Layer Steel Attach System



SCALE: 6"=1'-0"

NOTES:

1. PANEL VERTICAL AND HORIZONTAL JOINT SPACING SHOULD BE 3/8" TYPICAL.

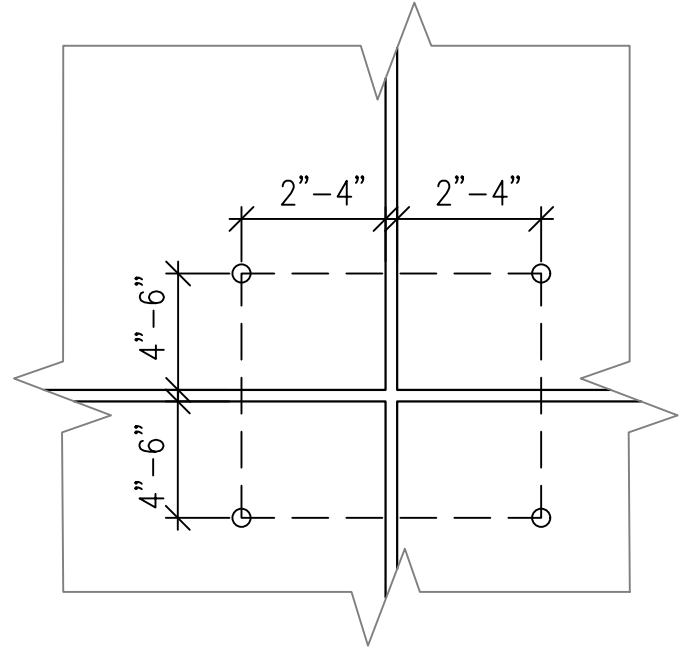
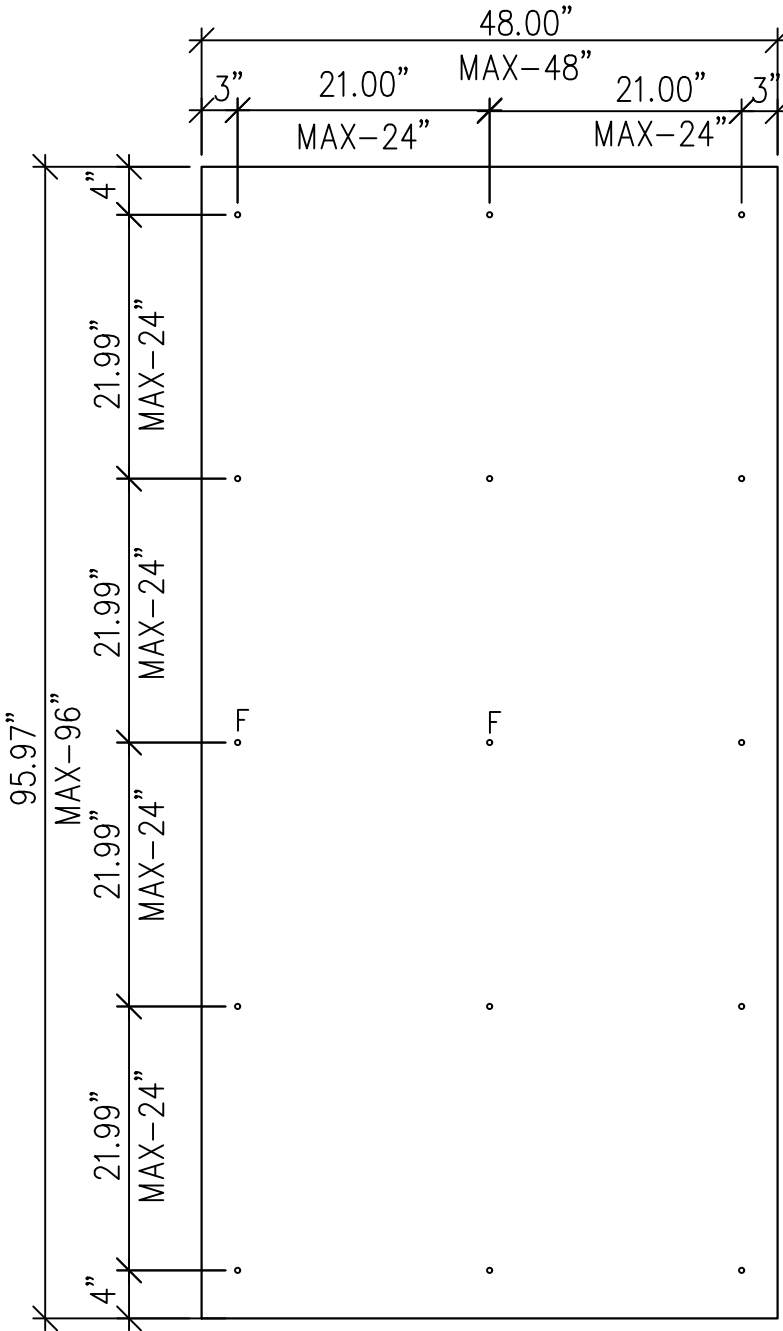


(303) 972-5107
 6901 S Pierce St #180
 Littleton, CO 80128
www.americanfibercement.com

Ref.:
 Expansion Joint @
 Inside Corner

Date: 06/07/2023

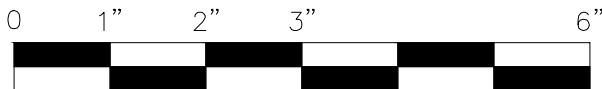
Typical Steel And Aluminum Attachment System



Typical Edge Fasteners
Scale 3"=1'

DRILLING KEY :

Metal (Steel and Aluminum) – Fixed Points 8.3 mm (Drill Bit Sourced from AFCC), Gliding Points 12mm (Drill Bit Sourced from AFCC)



SCALE 3/4"=1'-0"

NOTES:

1. PANEL VERTICAL AND HORIZONTAL JOINT SPACING SHOULD BE 3/8" TYPICAL.



(303) 972-5107
 6901 S Pierce St #180
 Littleton, CO 80128
www.americanfibercement.com

Ref.:
 Typical Fastner layout

Date: 06/07/2023