

One Layer Steel Attachment System with Rivets



AMERICAN
FIBER CEMENT



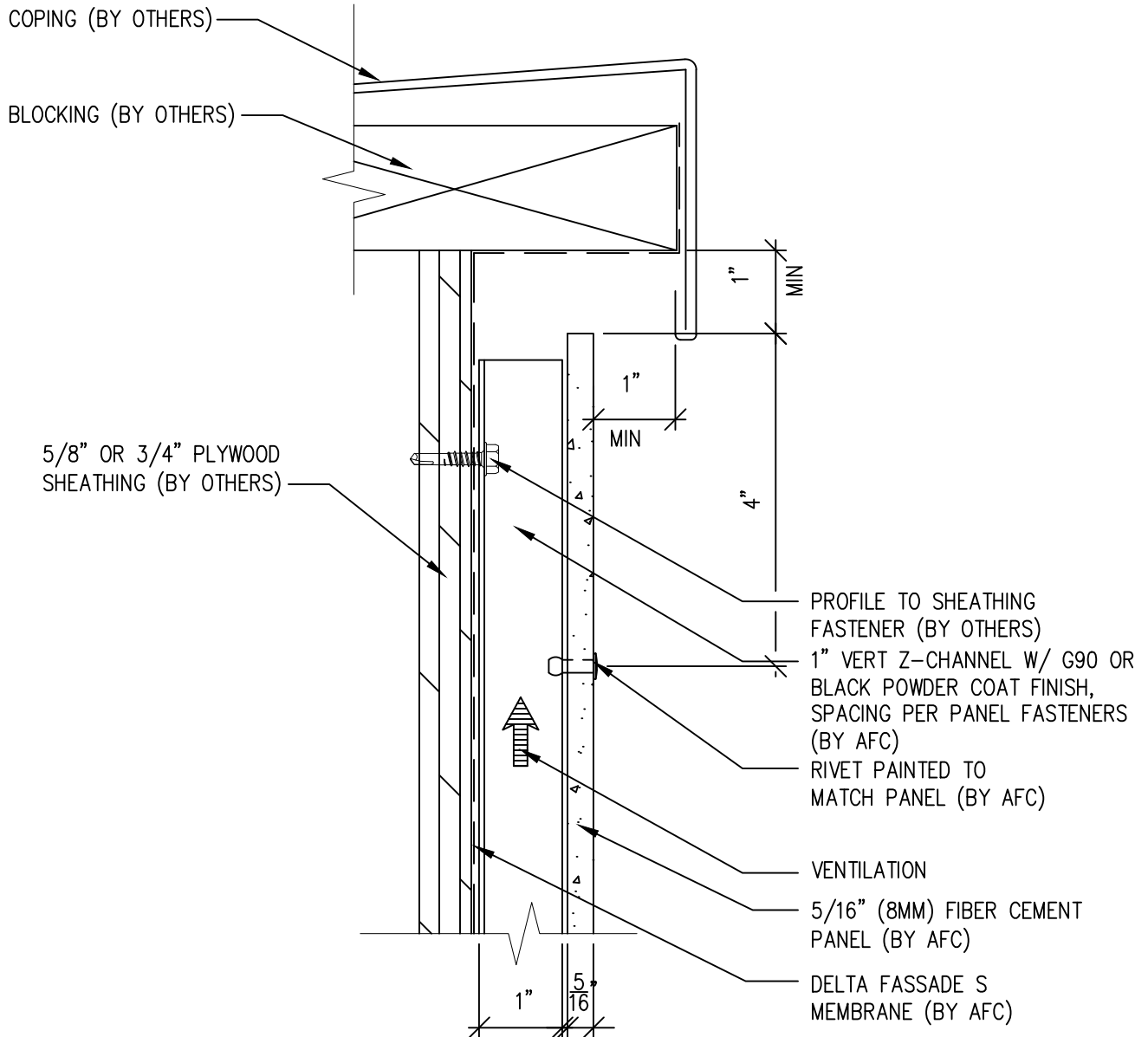
Fiber Cement Ventilated Rainscreen System



Typical Details

- Page 3: Top Panel @ Coping
- Page 4: Top Panel @ Soffit
- Page 5: Top of Panel @ F.C.P Soffit
- Page 6: Horizontal Joint @ Continuous Substrate
- Page 7: Horizontal Joint @ Break In Substrate
- Page 8: Not Permitted @ Break in Substrate
- Page 9: Bottom of Panel @ Wall Base
- Page 10: Bottom of Panel @ Open Termination
- Page 11: Bottom of Panel @ Low Roof Flashing
- Page 12: Bottom of Panel @ Soffit
- Page 13: Bottom of Panel @ Soffit (Alternate)
- Page 14: Bottom of Panel @ Soffit
- Page 15: Bottom of Panel @ F.C.P Soffit
- Page 16: Bottom of Panel @ F.C.P Soffit (Alternate)
- Page 17: Soffit Termination @ Adjacent Material
- Page 18: Bottom of Panel @ Window Head
- Page 19: Bottom of Panel @ Window Head (Alternate)
- Page 20: Top of Panel @ Window Sill
- Page 21: Panel Edge @ Window Jamb
- Page 22: Panel Edge @ Window Jamb (Alternate)
- Page 23: Vertical Panel Joint Option 1
- Page 24: Vertical Panel Joint Option 2
- Page 25: Panel Edge @ Butt Joint
- Page 26: Panels @ Outside Corner
- Page 27: Panels @ Inside Corner
- Page 28: Typical Fastener Layout

One Layer Steel Attach System



SCALE: 6" = 1'-0"

NOTES:

1. PANEL VERTICAL AND HORIZONTAL JOINT SPACING SHOULD BE 3/8" TYPICAL.



(303) 972-5107
 6901 S Pierce St #180
 Littleton, CO 80128

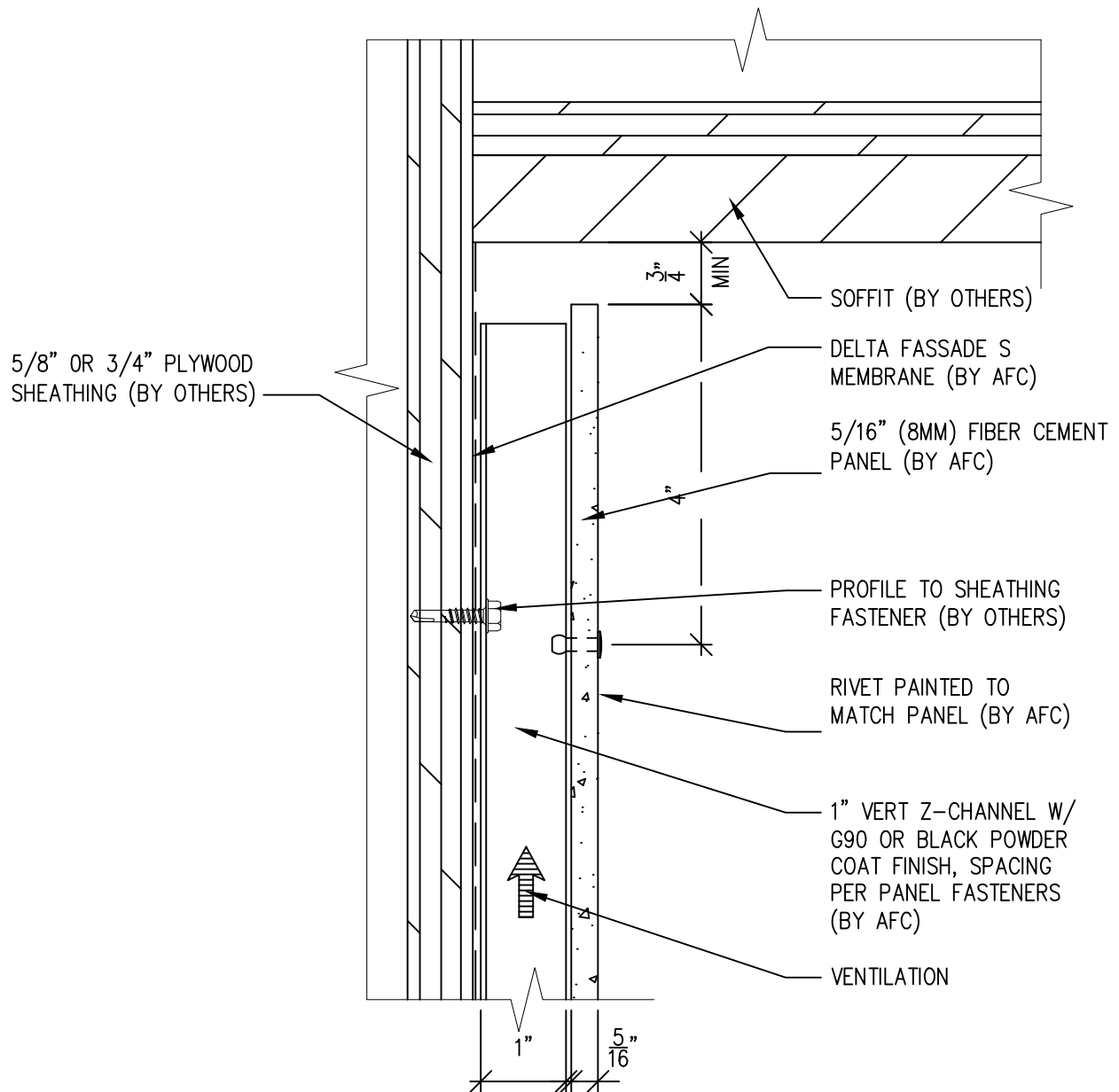
www.americanfibercement.com

Ref.:

Top of Panel @ Coping

Date: 06/07/2023

One Layer Steel Attach System-Rivets



SCALE: 6"=1'-0"

NOTES:

1. PANEL VERTICAL AND HORIZONTAL JOINT SPACING SHOULD BE 3/8" TYPICAL.

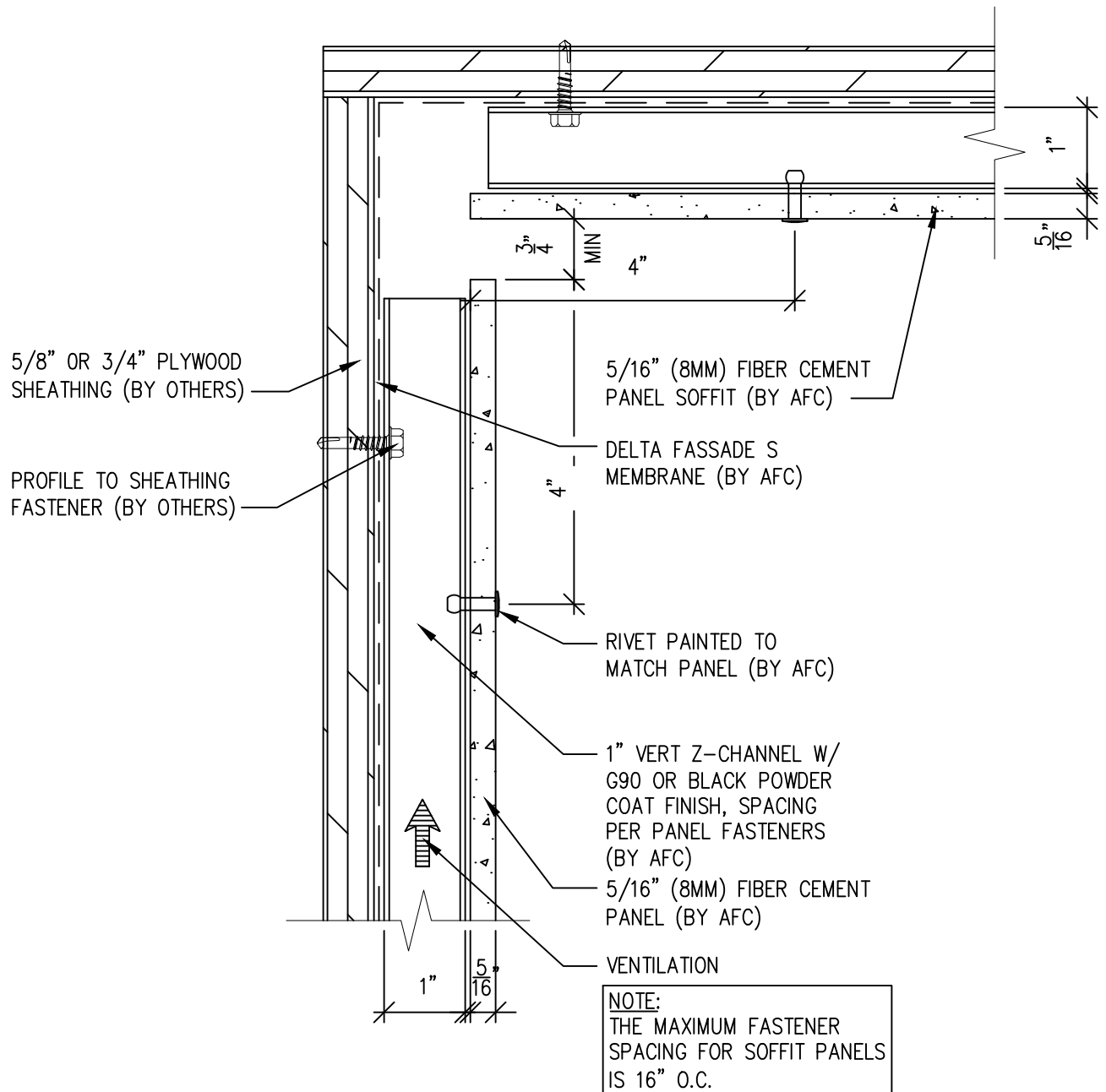


(303) 972-5107
 6901 S Pierce St #180
 Littleton, CO 80128
www.americanfibercement.com

Ref.:
 Top of Panel@
 Soffit

Date: 06/07/2023

One Layer Steel Attach System



SCALE: 6"=1'-0"

NOTES:

1. PANEL VERTICAL AND HORIZONTAL JOINT SPACING SHOULD BE 3/8" TYPICAL.



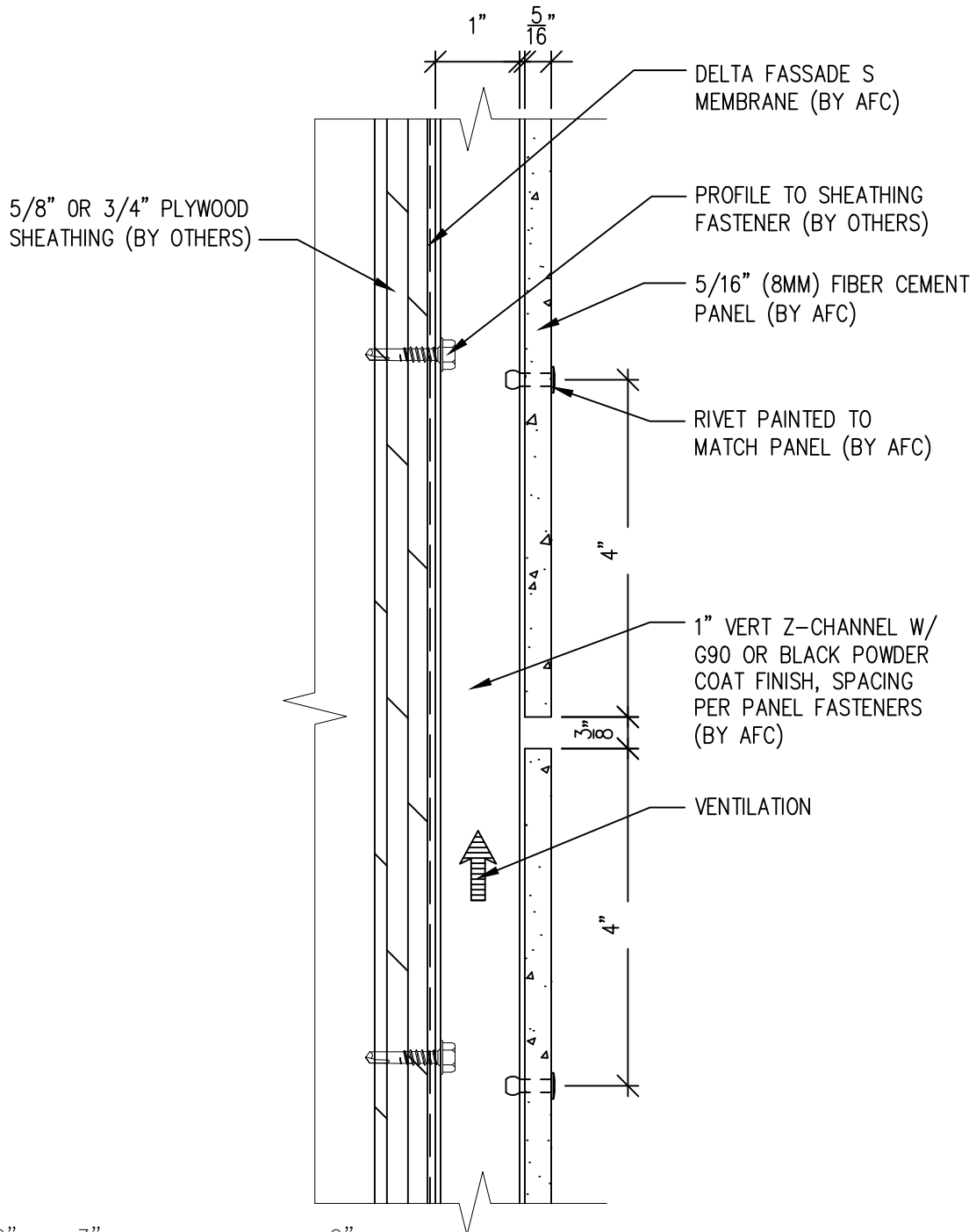
(303) 972-5107
6901 S Pierce St #180
Littleton, CO 80128

www.americanfibercement.com

Ref.:
Top of Panel @
F.C.P Soffit

Date: 06/07/2023

One Layer Steel Attach System



SCALE: 6"=1'-0"

NOTES:

1. PANEL VERTICAL AND HORIZONTAL JOINT SPACING SHOULD BE 3/8" TYPICAL.



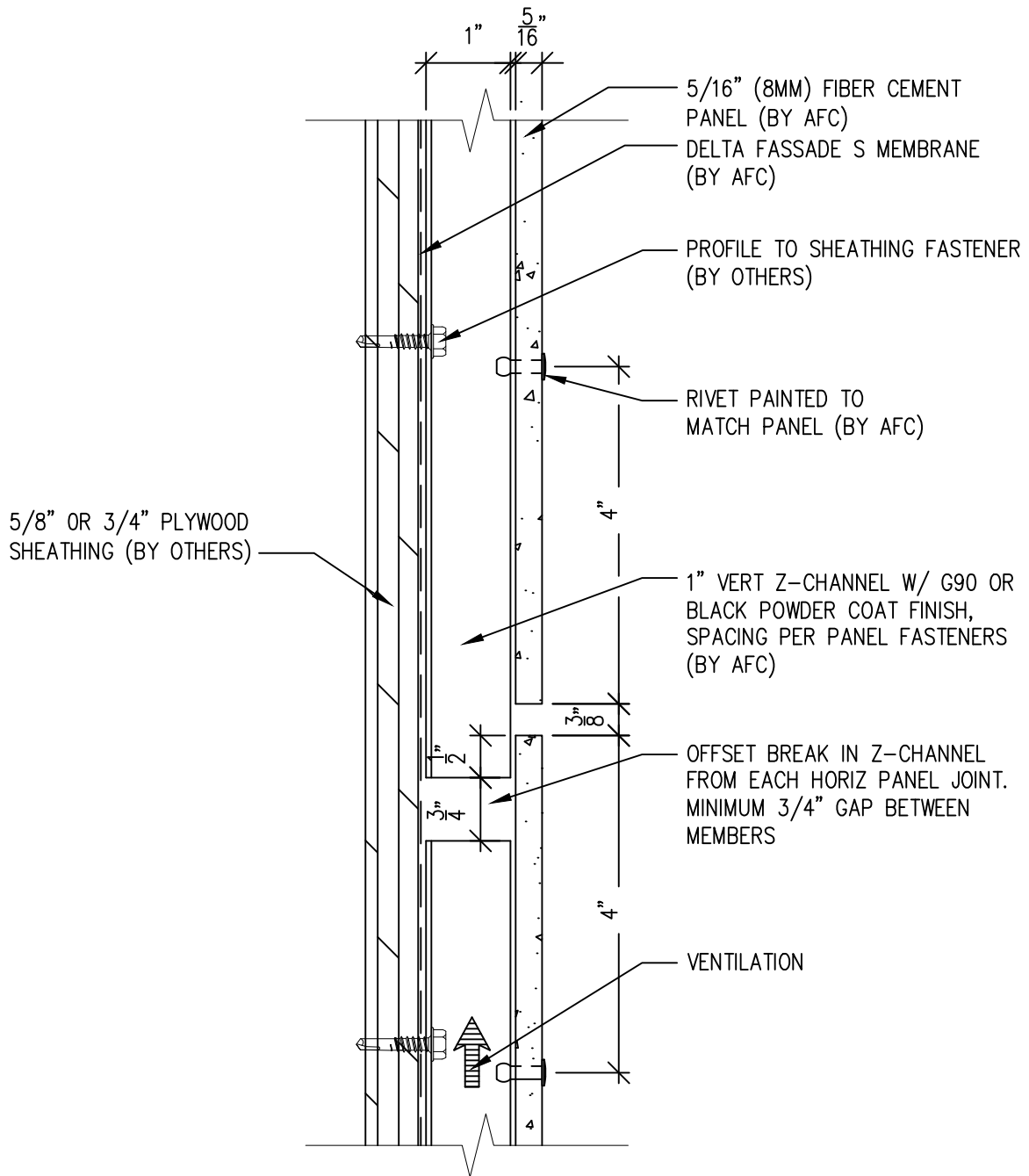
(303) 972-5107
 6901 S Pierce St #180
 Littleton, CO 80128

www.americanfibercement.com

Ref.: Horizontal Joint @
 Continuous Substrate

Date: 06/07/2023

One Layer Steel Attach System



SCALE: 6"=1'-0"

NOTES:

1. PANEL VERTICAL AND HORIZONTAL JOINT SPACING SHOULD BE 3/8" TYPICAL.



(303) 972-5107
 6901 S Pierce St #180
 Littleton, CO 80128

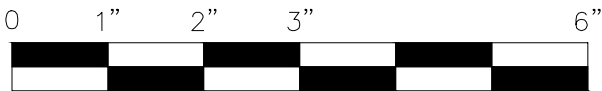
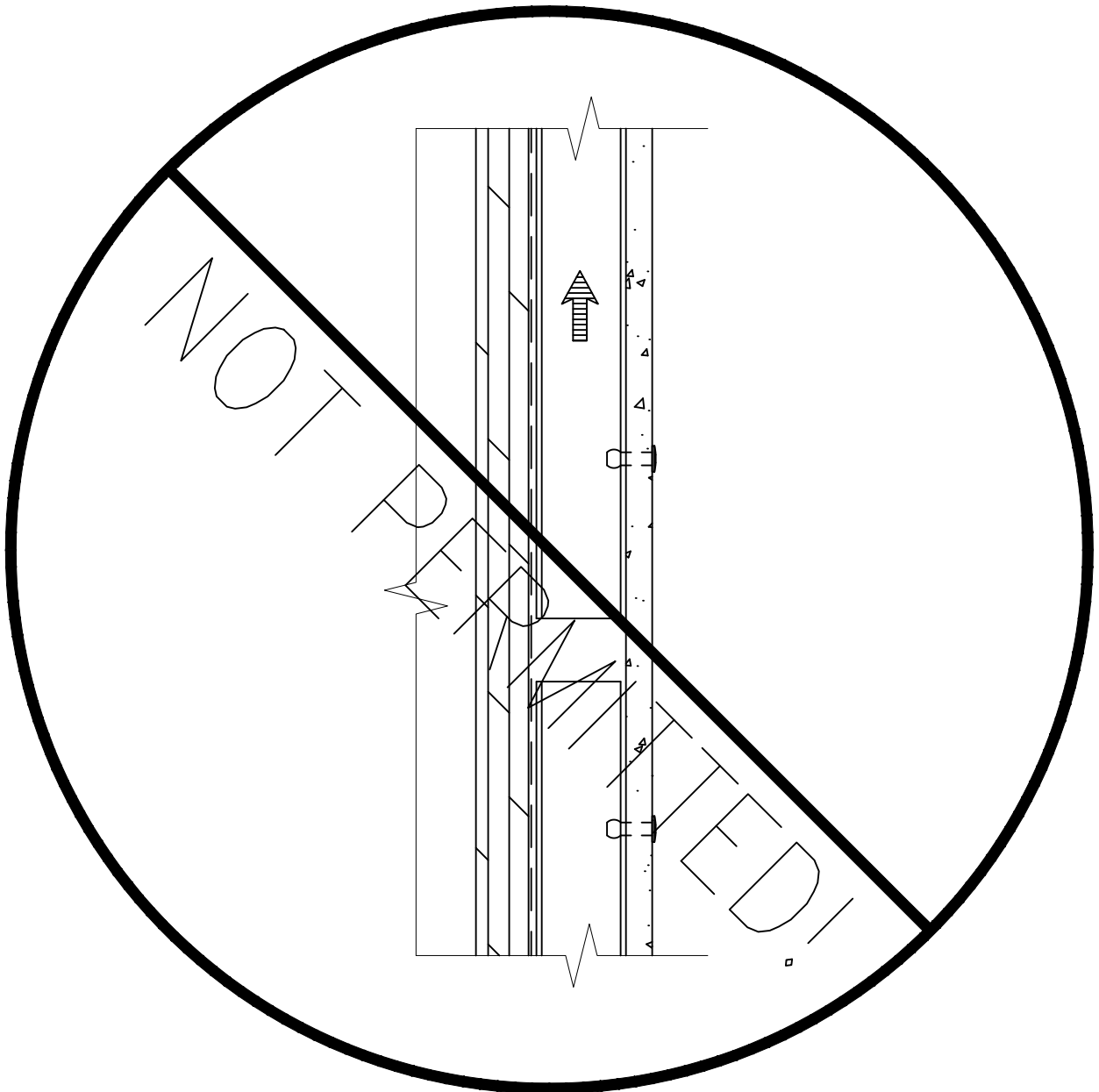
www.americanfiber cement.com

Ref.:

Horizontal Joint @
 Break in Substrate

Date: 06/07/2023

One Layer Steel Attach System



SCALE: 6"=1'-0"

NOTES:

1. PANEL VERTICAL AND HORIZONTAL JOINT SPACING SHOULD BE 3/8" TYPICAL.



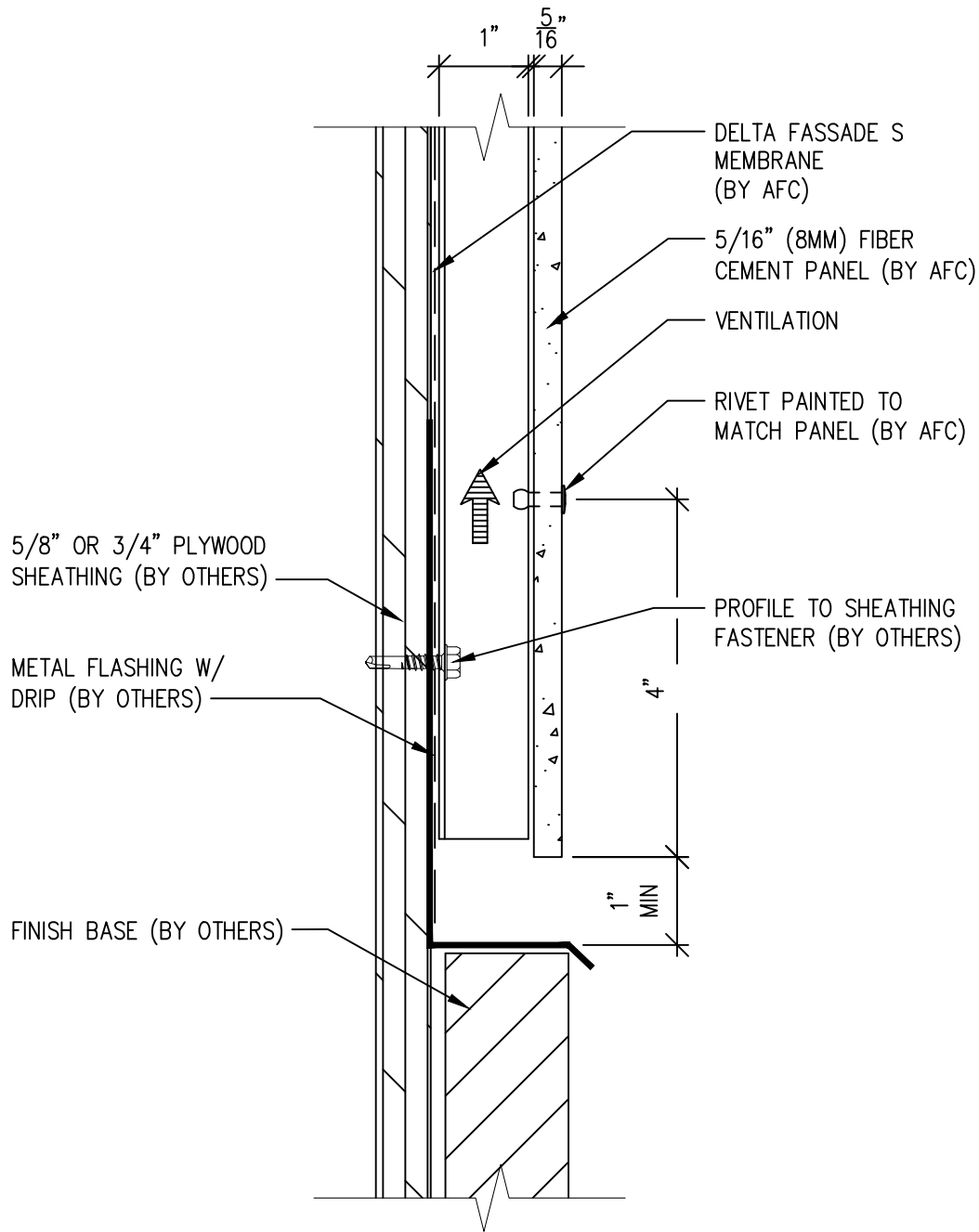
(303) 972-5107
6901 S Pierce St #180
Littleton, CO 80128

www.americanfibercement.com

Ref.:
Not Permitted @
Break in Substrate

Date: 06/07/2023

One Layer Steel Attach System



SCALE: 6"=1'-0"

NOTES:

1. PANEL VERTICAL AND HORIZONTAL JOINT SPACING SHOULD BE 3/8" TYPICAL.



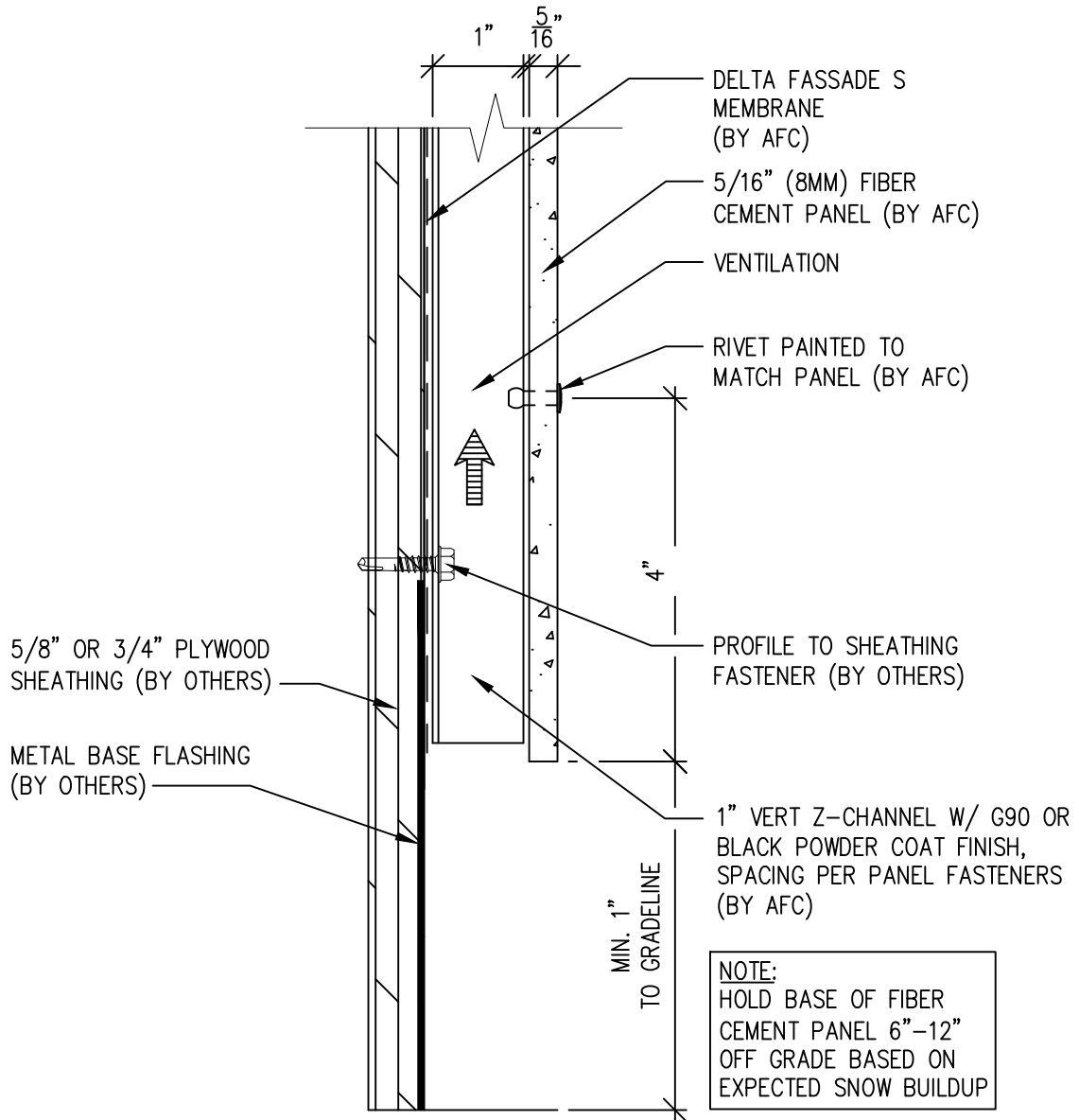
(303) 972-5107
 6901 S Pierce St #180
 Littleton, CO 80128

www.americanfibercement.com

Ref.:
 Bottom of Panel @
 Wall Base

Date: 06/07/2023

One Layer Steel Attach System-Rivets



SCALE: 6"=1'-0"

NOTES:

1. PANEL VERTICAL AND HORIZONTAL JOINT SPACING SHOULD BE 3/8" TYPICAL.

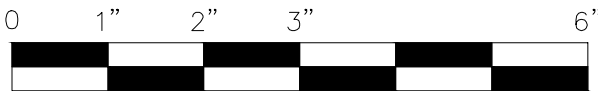
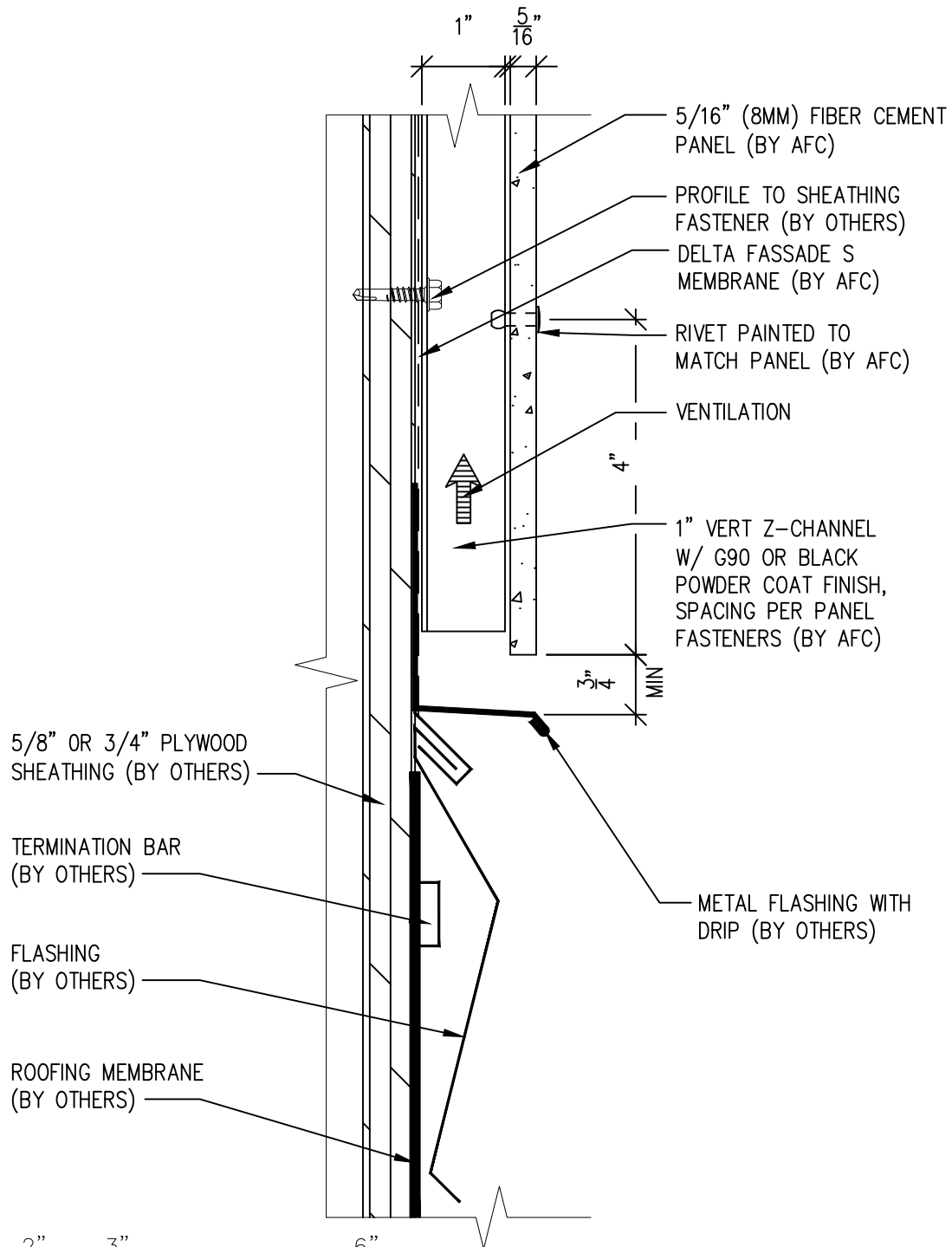


(303) 972-5107
6901 S Pierce St #180
Littleton, CO 80128
www.americanfibercement.com

Ref.:
Bottom of Panel @
Open Termination

Date: 06/07/2023

One Layer Steel Attach System-Rivets



SCALE: 6"=1'-0"

NOTES:

1. PANEL VERTICAL AND HORIZONTAL JOINT SPACING SHOULD BE 3/8" TYPICAL.

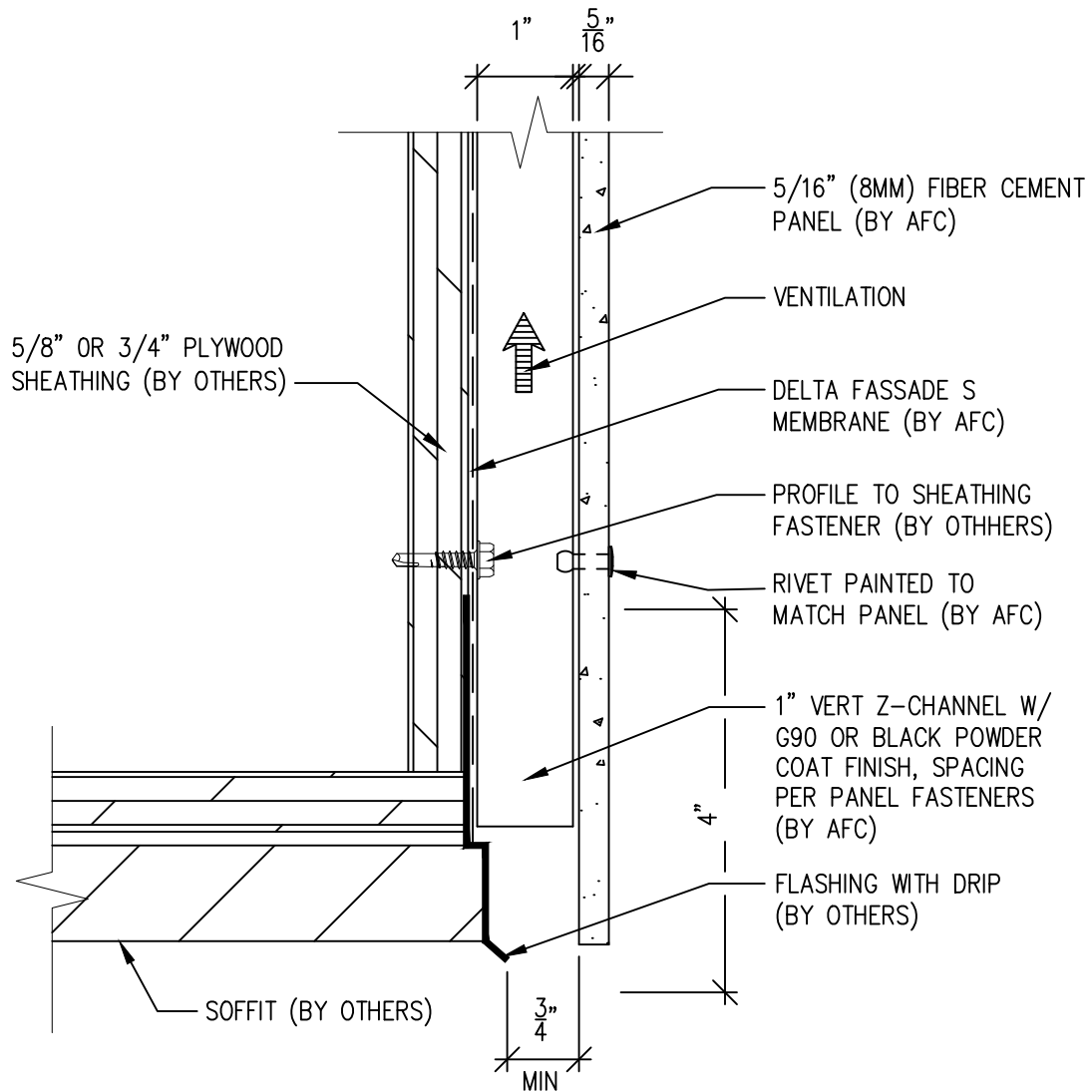


(303) 972-5107
 6901 S Pierce St #180
 Littleton, CO 80128
www.americanfiberceement.com

Ref.:
 Bottom of Panel @
 Low Roof Flashing

Date: 06/07/2023

One Layer Steel Attach System



SCALE: 6"=1'-0"

NOTES:

1. PANEL VERTICAL AND HORIZONTAL JOINT SPACING SHOULD BE 3/8" TYPICAL.



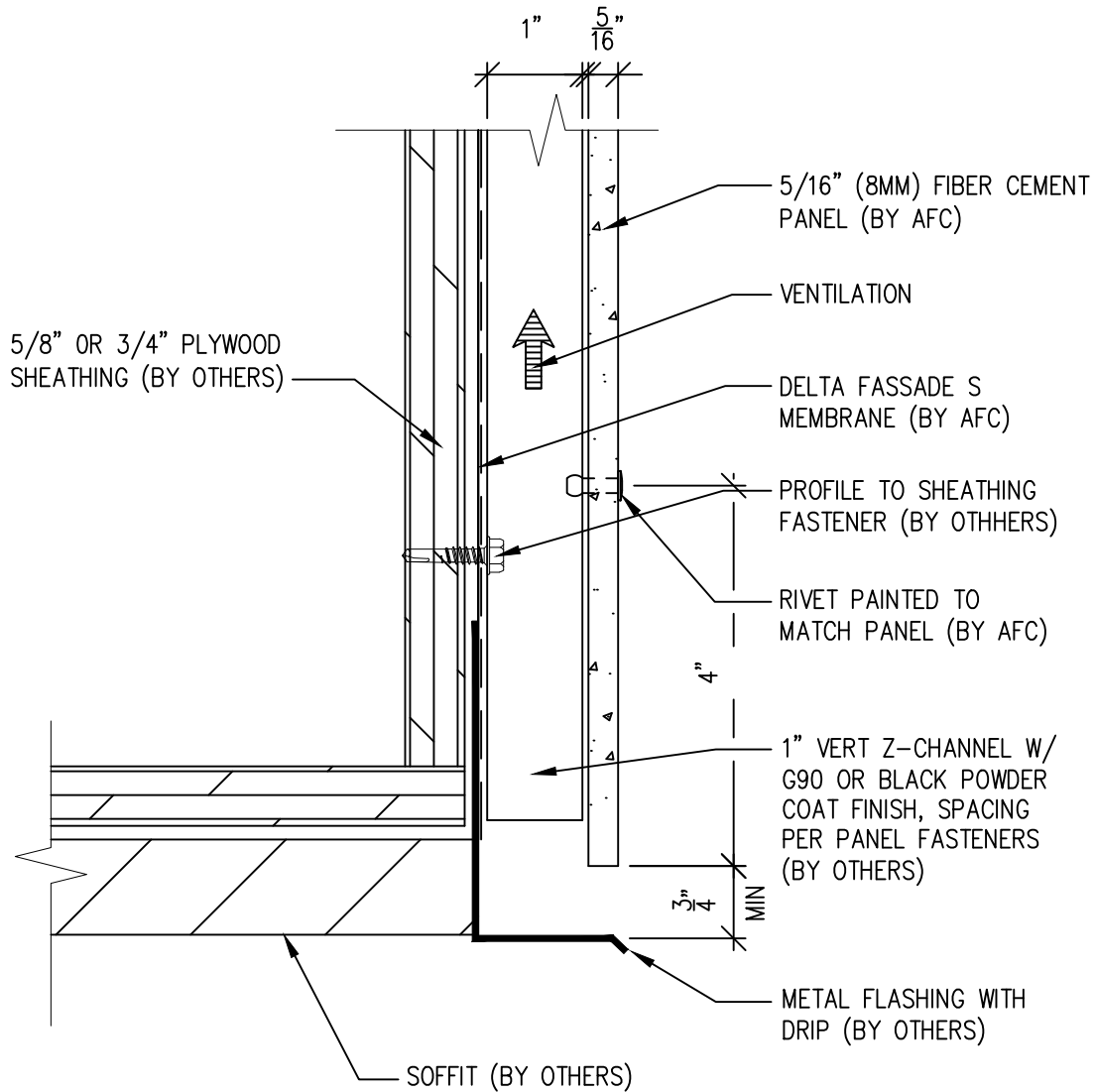
(303) 972-5107
6901 S Pierce St #180
Littleton, CO 80128

www.americanfibercement.com

Ref.:
Bottom of Panel @
Soffit

Date: 06/07/2023

One Layer Steel Attach System



SCALE: 6"=1'-0"

NOTES:

1. PANEL VERTICAL AND HORIZONTAL JOINT SPACING SHOULD BE 3/8" TYPICAL.



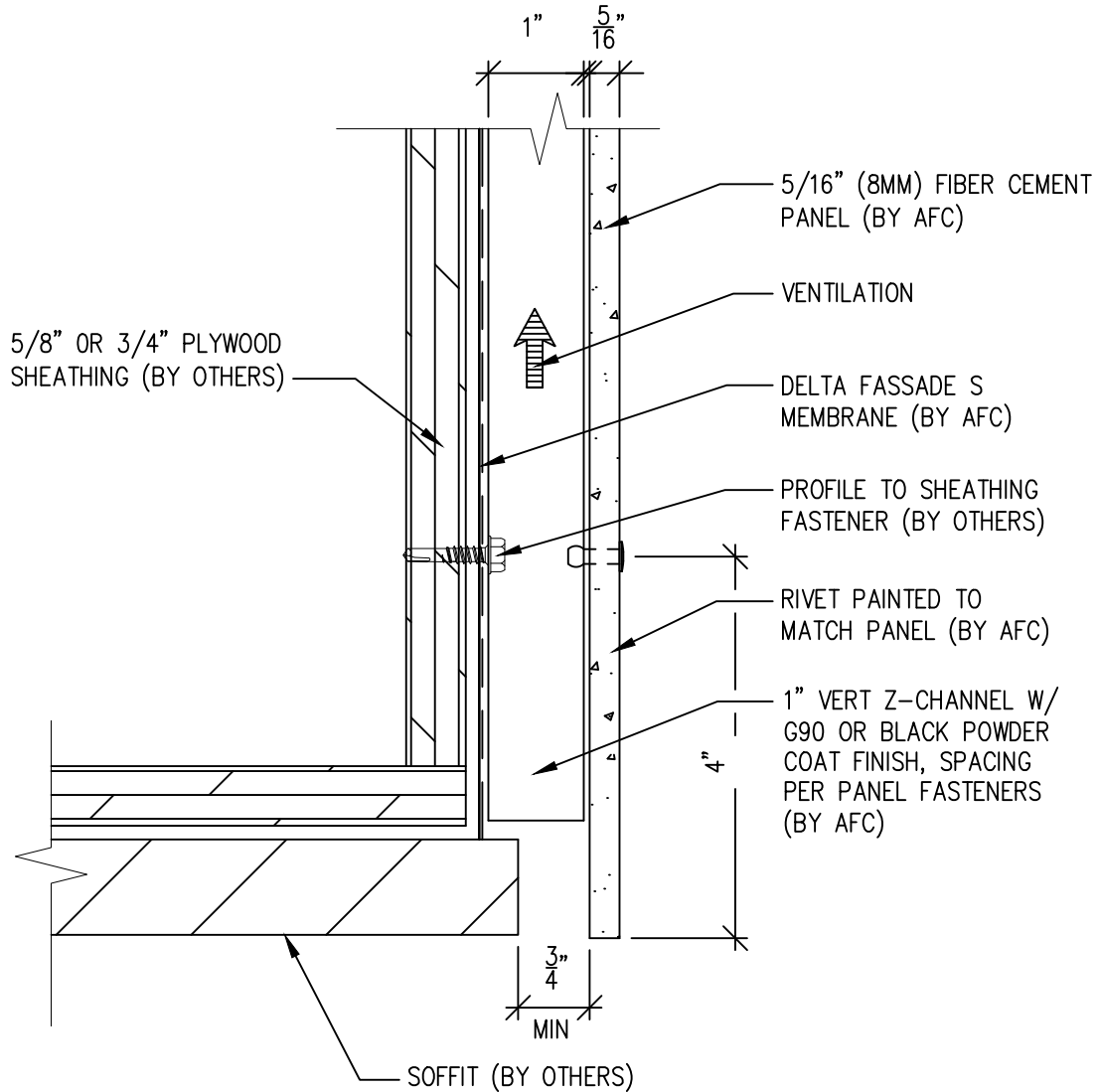
(303) 972-5107
 6901 S Pierce St #180
 Littleton, CO 80128

www.americanfibercement.com

Ref.:
 Bottom of Panel @
 Soffit(Alternate)

Date: 06/07/2023

One Layer Steel Attach System



SCALE: 6"=1'-0"

NOTES:

1. PANEL VERTICAL AND HORIZONTAL JOINT SPACING SHOULD BE 3/8" TYPICAL.



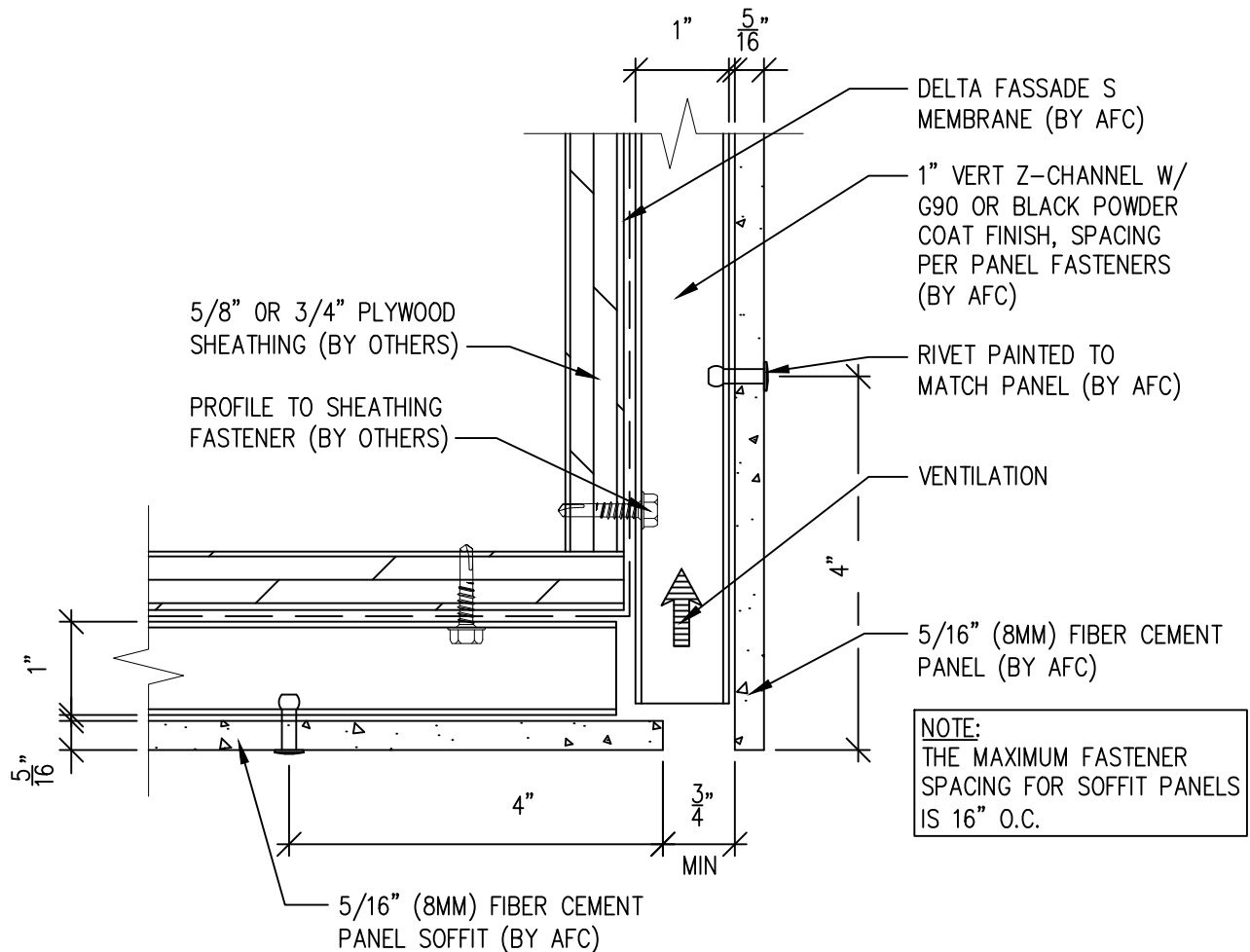
(303) 972-5107
 6901 S Pierce St #180
 Littleton, CO 80128

www.americanfibercement.com

Ref.:
 Bottom of Panel @
 Soffit

Date: 06/07/2023

One Layer Steel Attach System



SCALE: 6"=1'-0"

NOTES:

- PANEL VERTICAL AND HORIZONTAL JOINT SPACING SHOULD BE 3/8" TYPICAL.



(303) 972-5107
6901 S Pierce St #180
Littleton, CO 80128

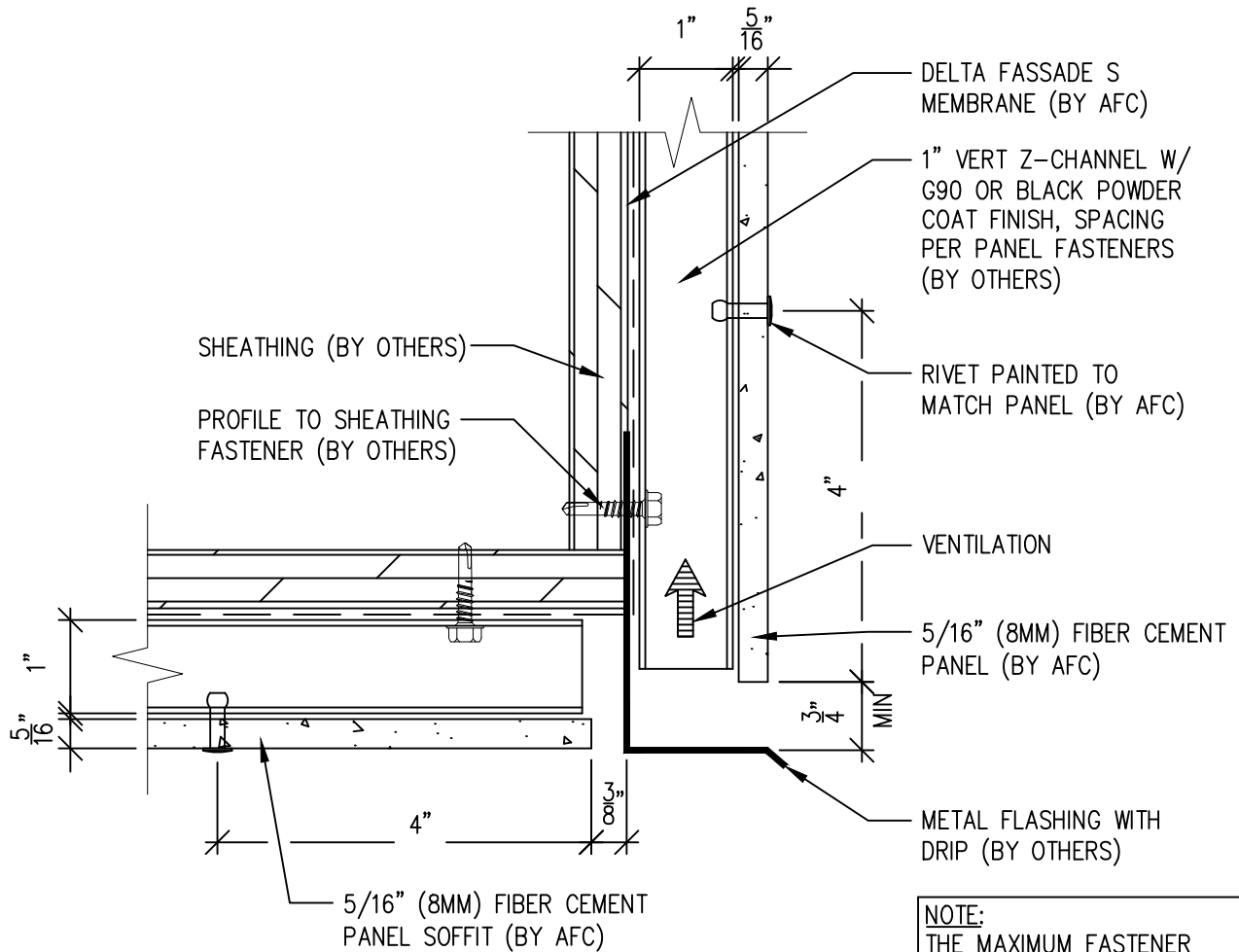
www.americanfibercement.com

Ref.:

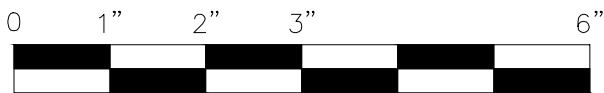
Bottom of Panel @
F.C.P Soffit

Date: 06/07/2023

One Layer Steel Attach System



NOTE:
THE MAXIMUM FASTENER SPACING FOR SOFFIT PANELS IS 16" O.C.



SCALE: 6"=1'-0"

NOTES:

1. PANEL VERTICAL AND HORIZONTAL JOINT SPACING SHOULD BE 3/8" TYPICAL.



(303) 972-5107
6901 S Pierce St #180
Littleton, CO 80128

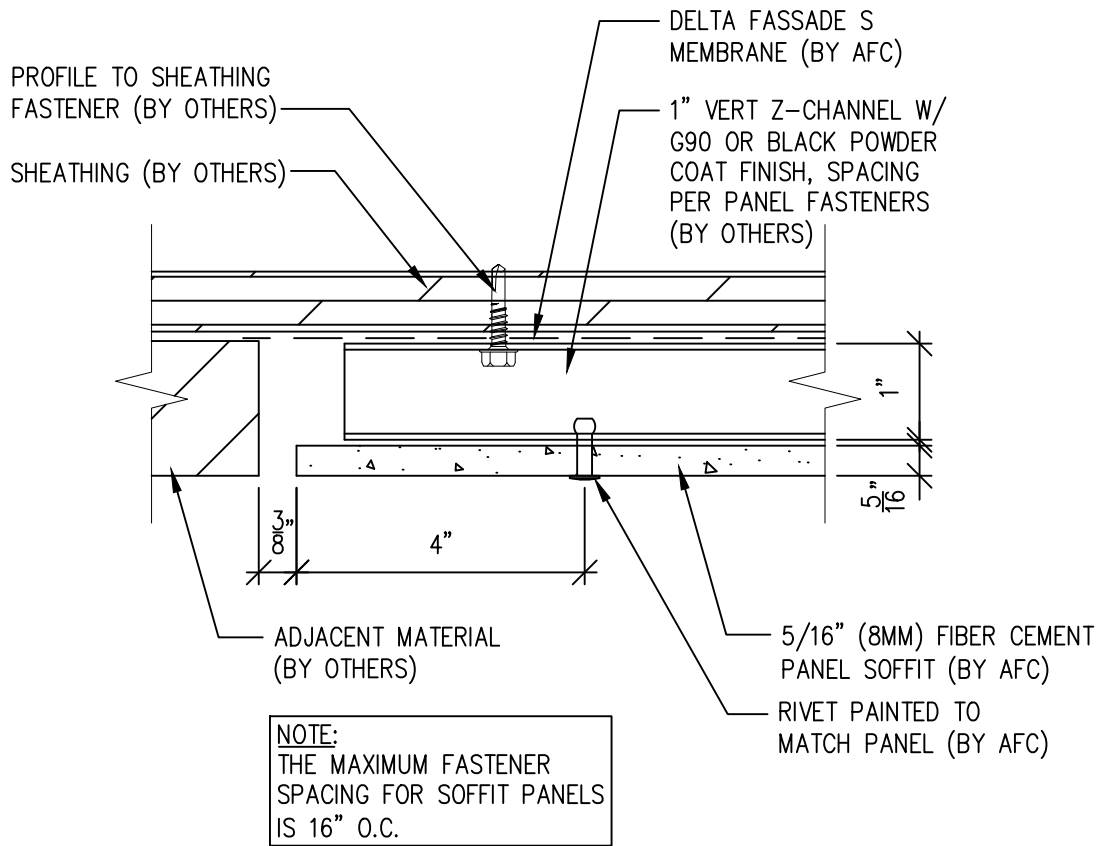
www.americanfiberceement.com

Ref.:

Bottom of Panel @
F.C.P Soffit(Alternate)

Date: 06/07/2023

One Layer Steel Attach System



SCALE: 6"=1'-0"

NOTES:

1. PANEL VERTICAL AND HORIZONTAL JOINT SPACING SHOULD BE 3/8" TYPICAL.



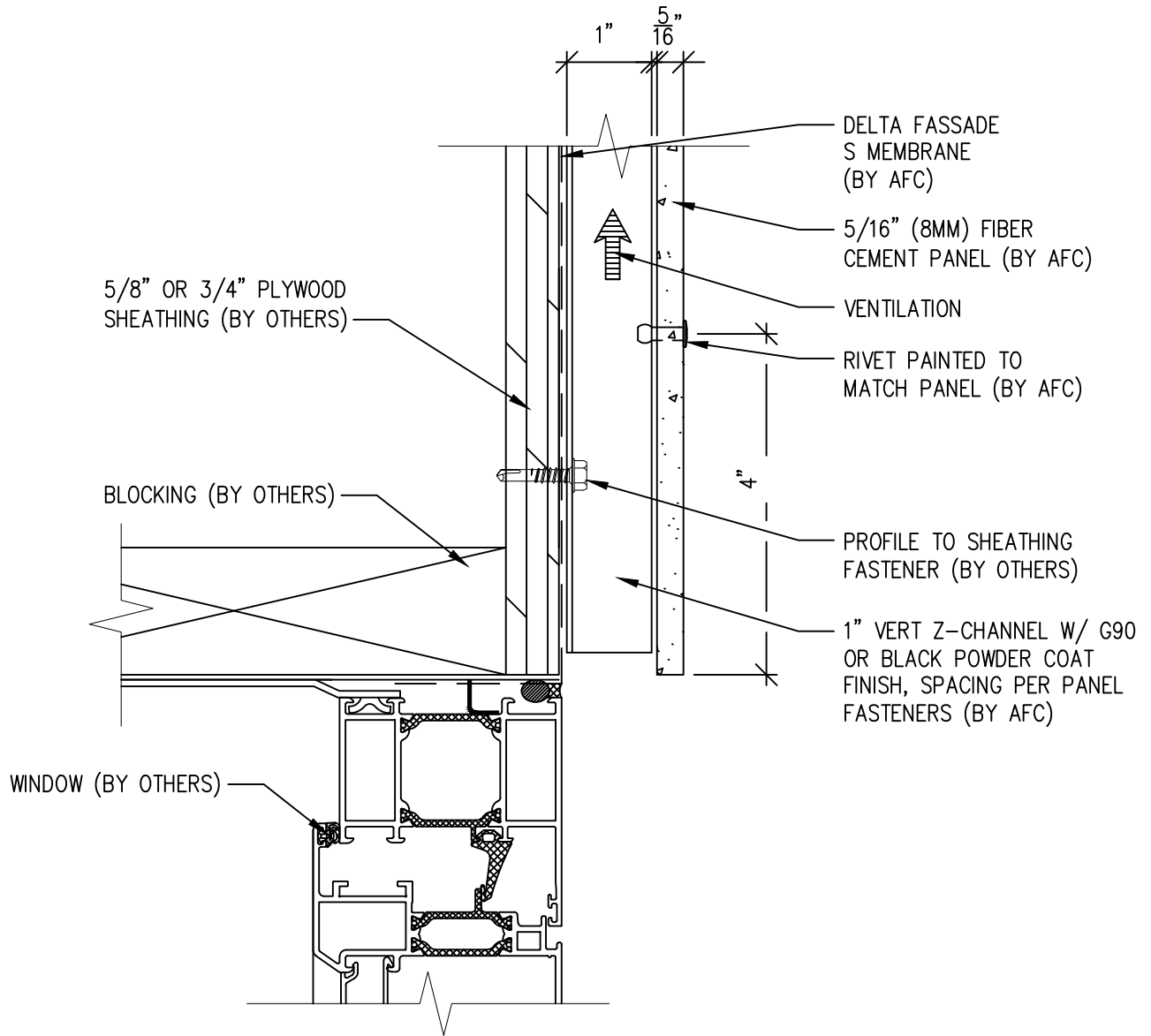
(303) 972-5107
6901 S Pierce St #180
Littleton, CO 80128

www.americanfibercement.com

Ref.:
Soffit Termination @
Adjacent Material

Date: 06/07/2023

One Layer Steel Attach System-Rivets



SCALE: 6"=1'-0"

NOTES:

1. PANEL VERTICAL AND HORIZONTAL JOINT SPACING SHOULD BE 3/8" TYPICAL.



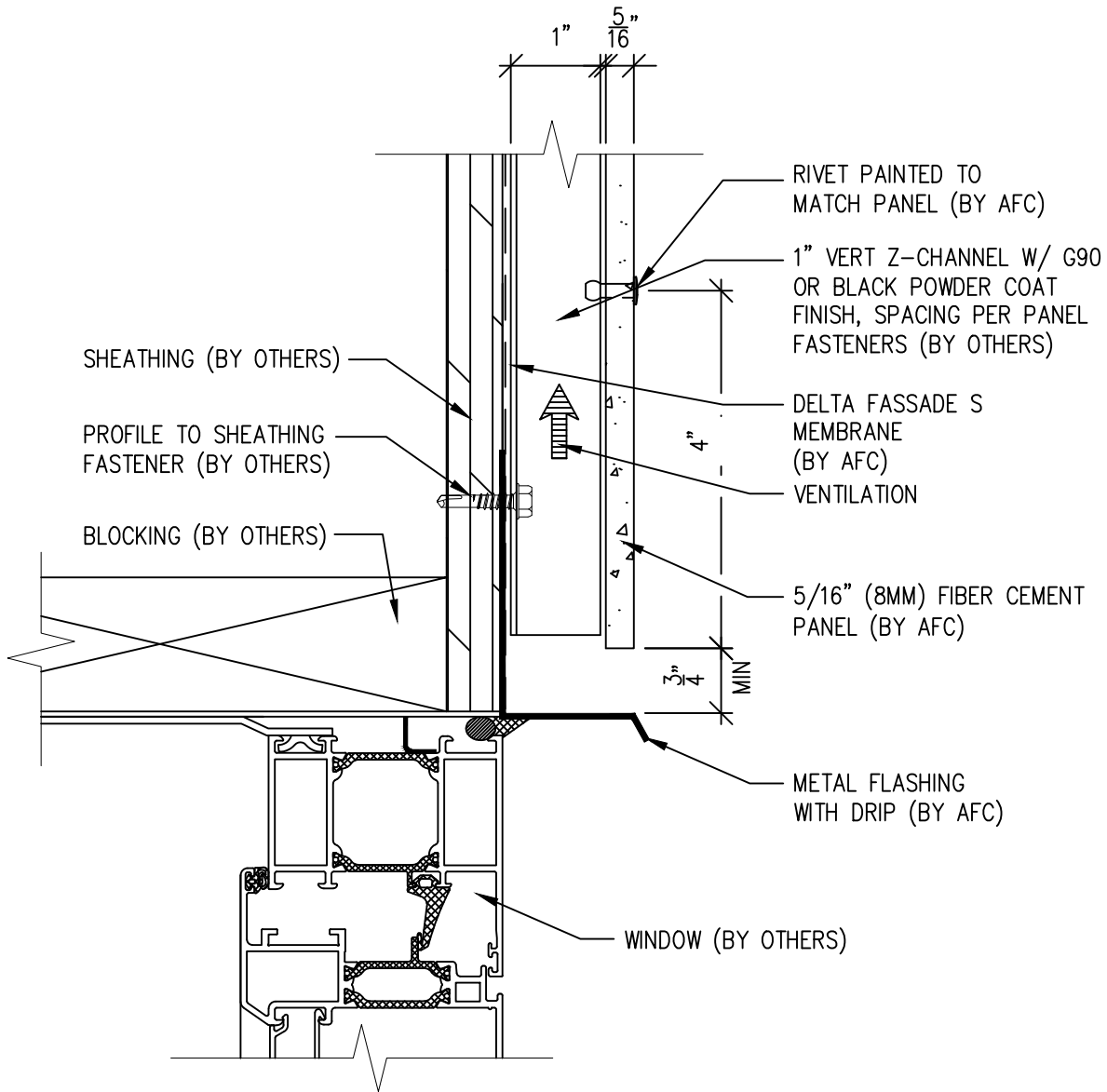
(303) 972-5107
 6901 S Pierce St #180
 Littleton, CO 80128

www.americanfibercement.com

Ref.:
 Bottom of Panel @
 Window Head

Date: 06/07/2023

One Layer Steel Attach System



SCALE: 6"=1'-0"

NOTES:

1. PANEL VERTICAL AND HORIZONTAL JOINT SPACING SHOULD BE 3/8" TYPICAL.



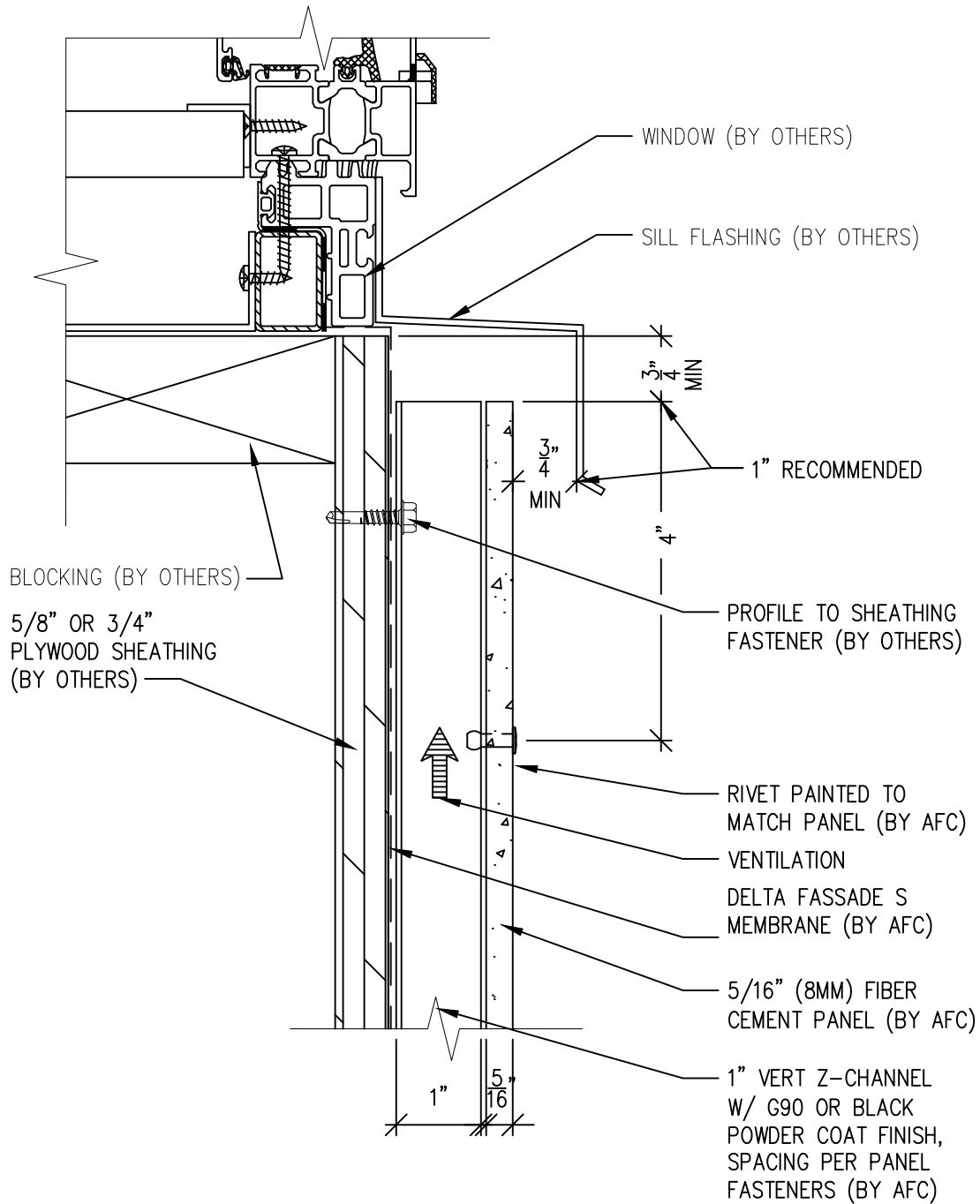
(303) 972-5107
 6901 S Pierce St #180
 Littleton, CO 80128

www.americanfiberceement.com

Ref.:
 Bottom of Panel @
 Window Head (Alternate)

Date: 06/07/2023

One Layer Steel Attach System



SCALE: 6"=1'-0"

NOTES:

1. PANEL VERTICAL AND HORIZONTAL JOINT SPACING SHOULD BE 3/8" TYPICAL.



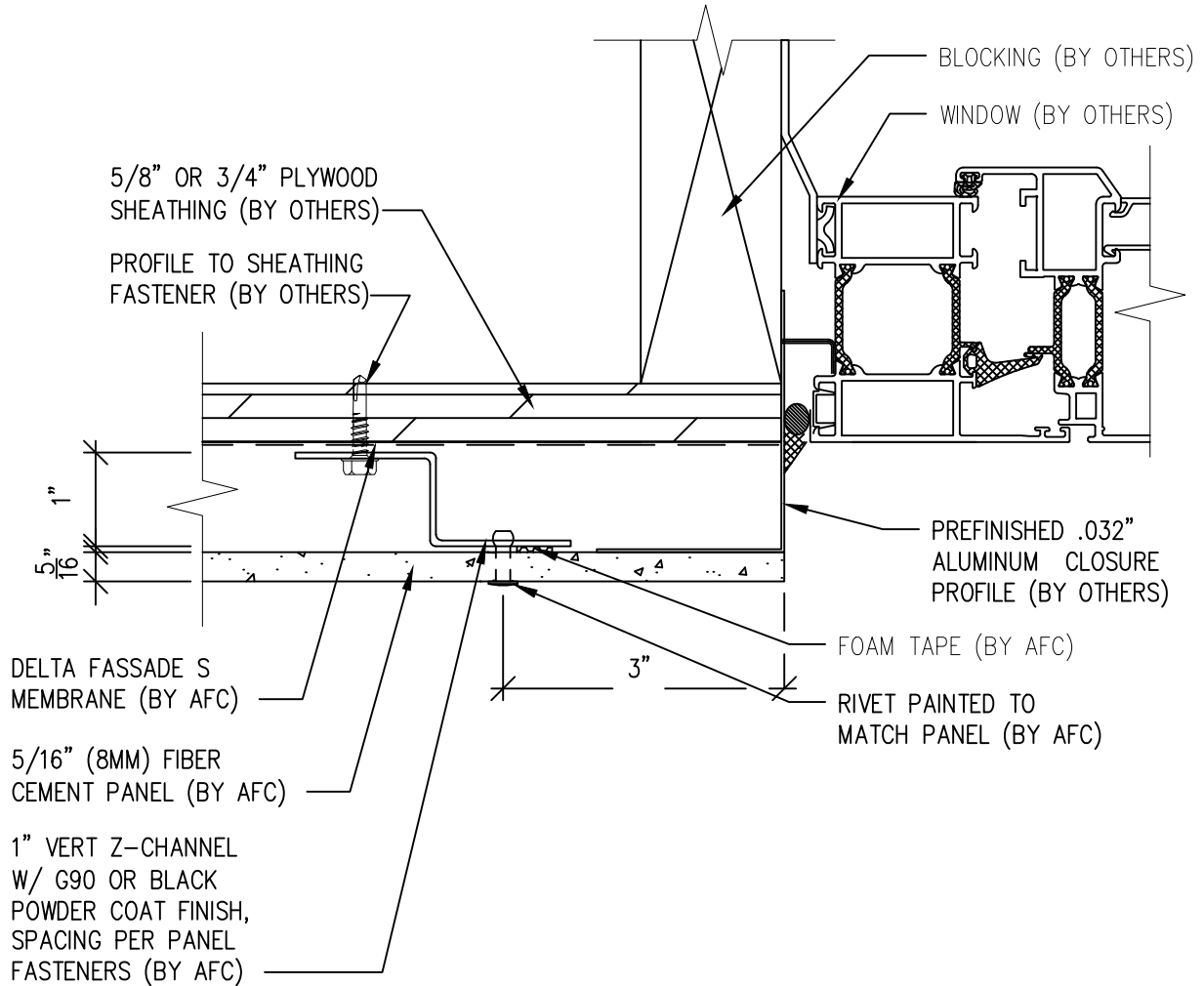
(303) 972-5107
6901 S Pierce St #180
Littleton, CO 80128

www.americanfibercement.com

Ref.:
Top of Panel @
Window Sill

Date: 06/07/2023

One Layer Steel Attach System



SCALE: 6"=1'-0"

NOTES:

1. PANEL VERTICAL AND HORIZONTAL JOINT SPACING SHOULD BE 3/8" TYPICAL.

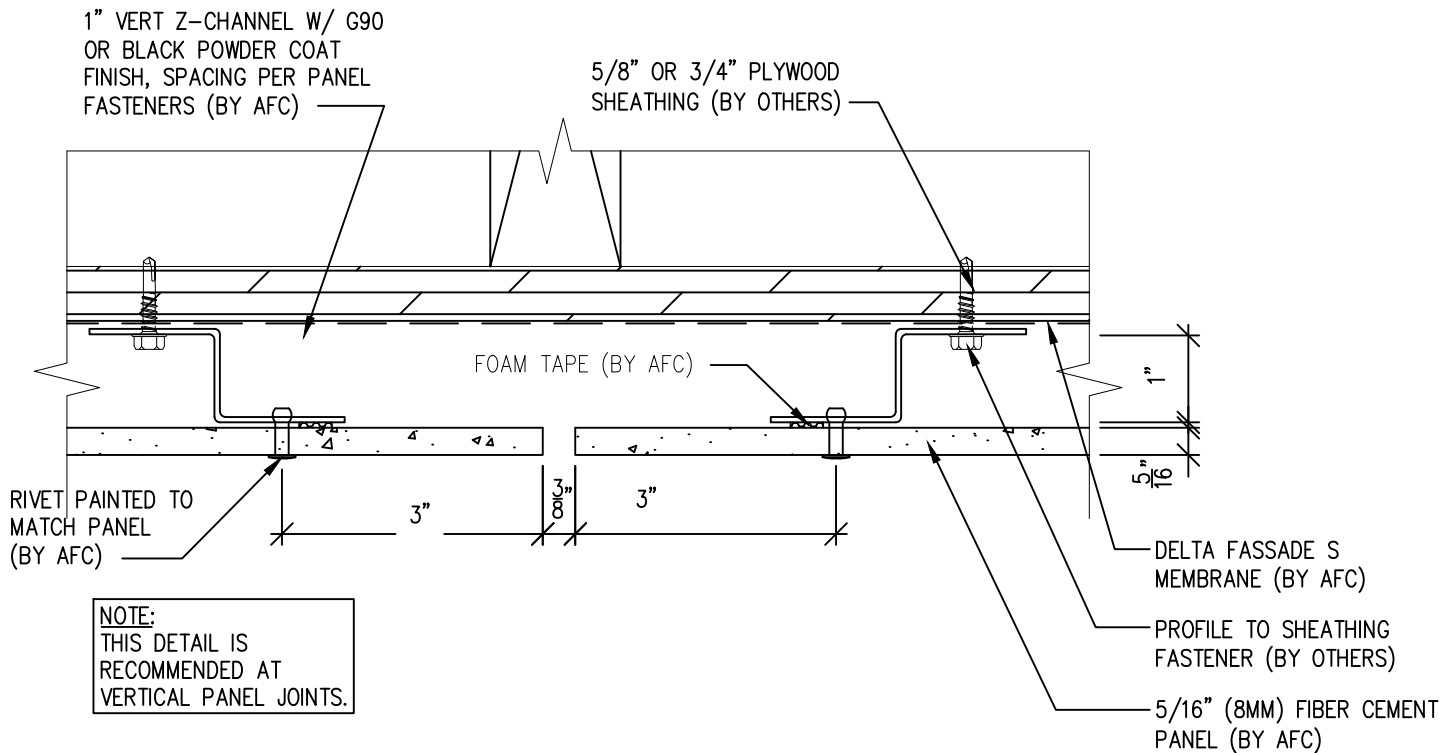


(303) 972-5107
 6901 S Pierce St #180
 Littleton, CO 80128
www.americanfibercement.com

Ref.:
 Panel Edge @
 Window Jamb

Date: 06/07/2023

One Layer Steel Attach System



SCALE: 6"=1'-0"

NOTES:

1. PANEL VERTICAL AND HORIZONTAL JOINT SPACING SHOULD BE 3/8" TYPICAL.



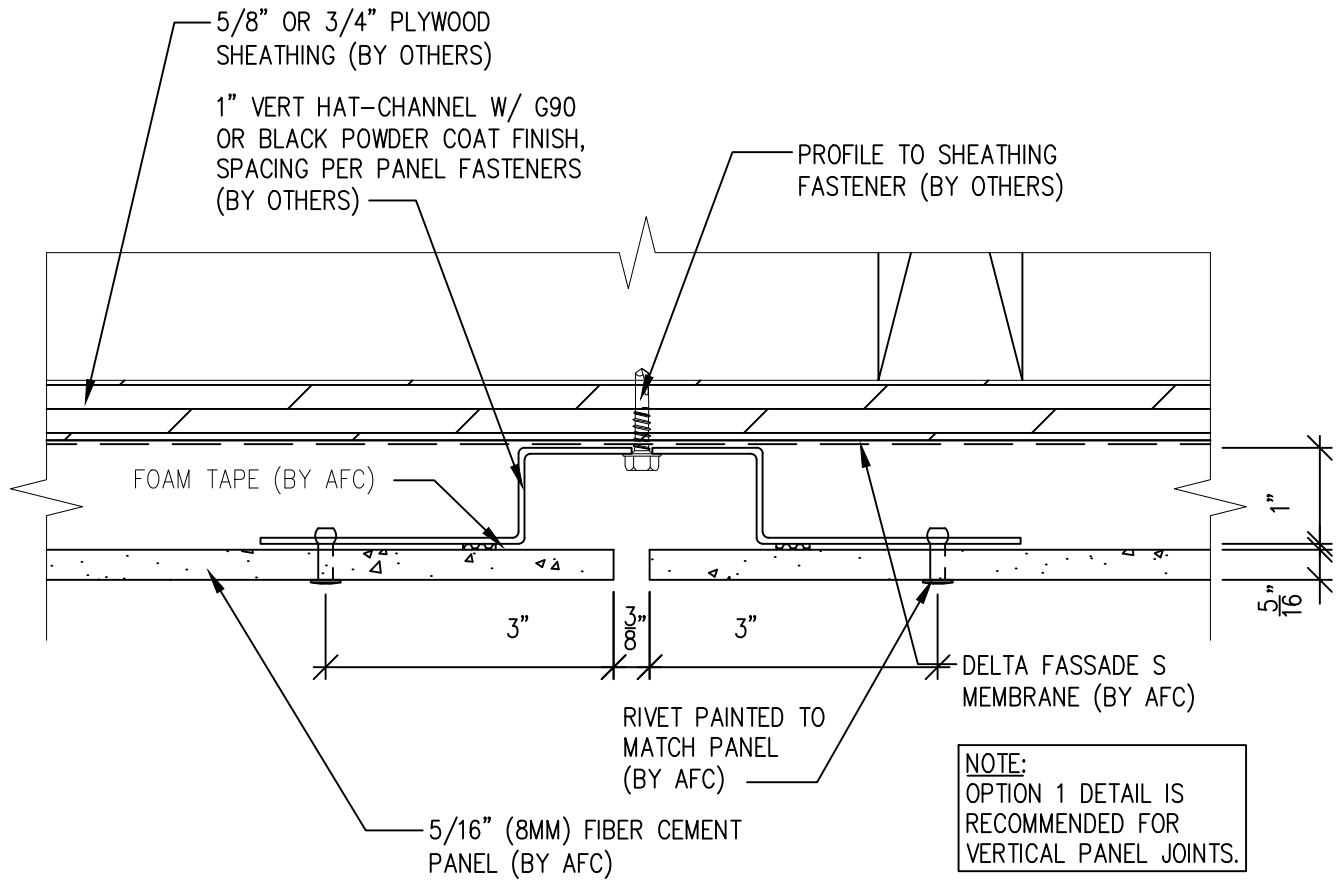
(303) 972-5107
6901 S Pierce St #180
Littleton, CO 80128

www.americanfiber cement.com

Ref.:
Vertical Panel Joint
Option 1

Date: 06/07/2023

One Layer Steel Attach System



SCALE: 6"=1'-0"

NOTES:

1. PANEL VERTICAL AND HORIZONTAL JOINT SPACING SHOULD BE 3/8" TYPICAL.

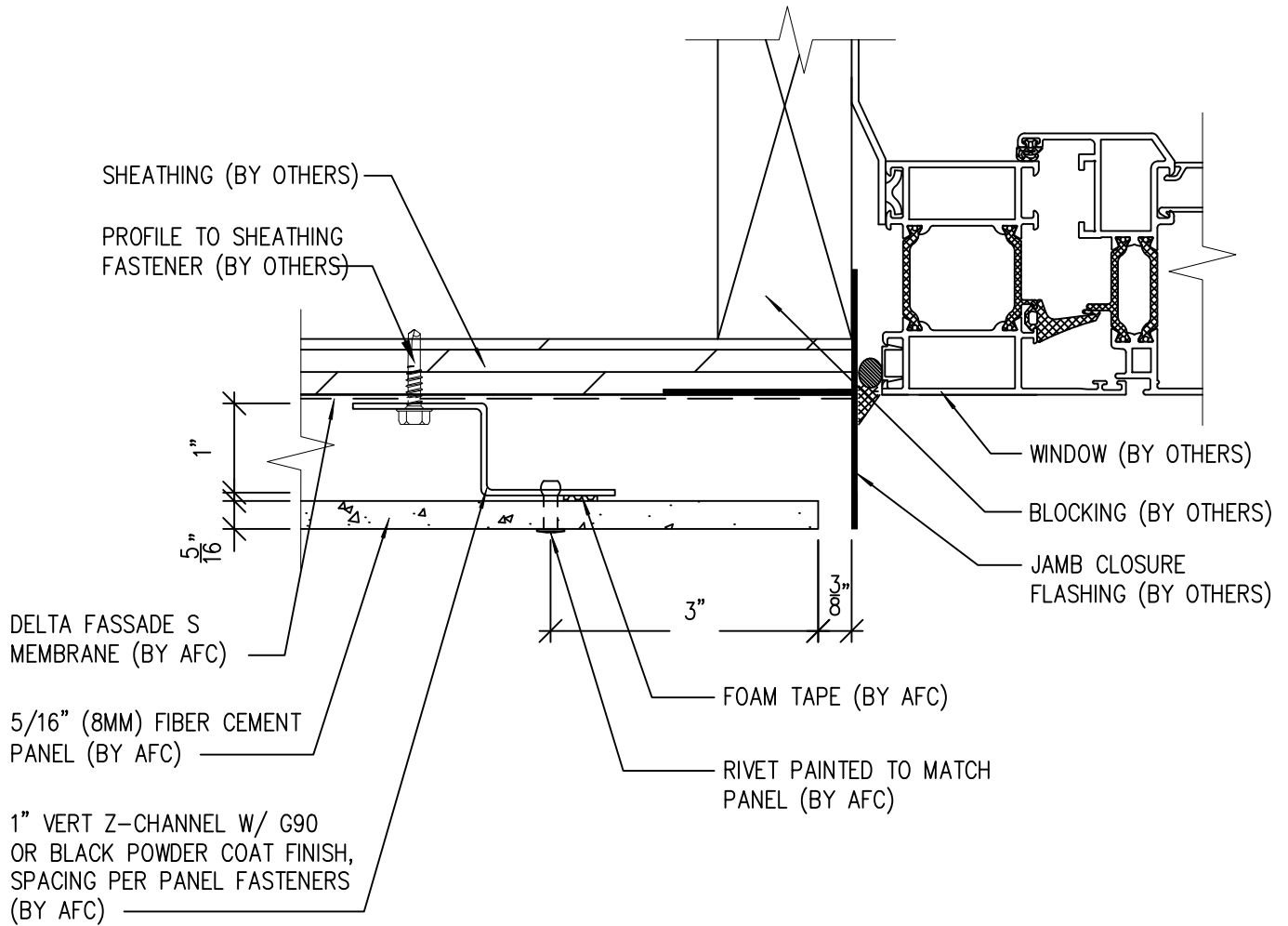


(303) 972-5107
6901 S Pierce St #180
Littleton, CO 80128
www.americanfibercement.com

Ref.:
Vertical Panel Joint
Option-2

Date: 06/07/2023

One Layer Steel Attach System



SCALE: 6"=1'-0"

NOTES:

1. PANEL VERTICAL AND HORIZONTAL JOINT SPACING SHOULD BE 3/8" TYPICAL.



(303) 972-5107
 6901 S Pierce St #180
 Littleton, CO 80128

www.americanfiber cement.com

Ref.:
 Panel Edge @ Window
 Jamb Alternate

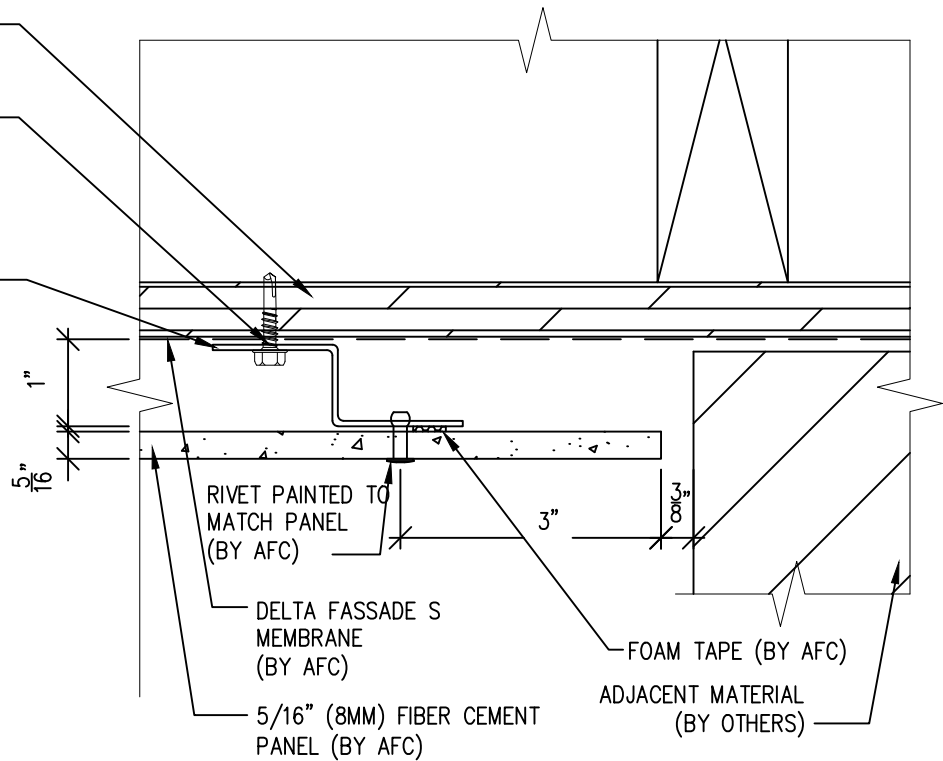
Date: 06/07/2023

One Layer Steel Attach System

5/8" OR 3/4" PLYWOOD
SHEATHING (BY OTHERS)

PROFILE TO SHEATHING
FASTENER (BY OTHERS)

1" VERT Z-CHANNEL W/
G90 OR BLACK POWDER
COAT FINISH, SPACING
PER PANEL FASTENERS
(BY AFC)



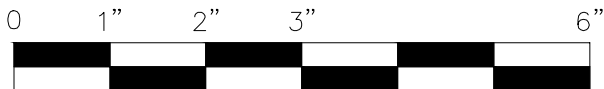
RIVET PAINTED TO
MATCH PANEL
(BY AFC)

DELTA FASSADE S
MEMBRANE
(BY AFC)

5/16" (8MM) FIBER CEMENT
PANEL (BY AFC)

FOAM TAPE (BY AFC)

ADJACENT MATERIAL
(BY OTHERS)



SCALE: 6"=1'-0"

NOTES:

1. PANEL VERTICAL AND HORIZONTAL JOINT SPACING SHOULD BE 3/8" TYPICAL.



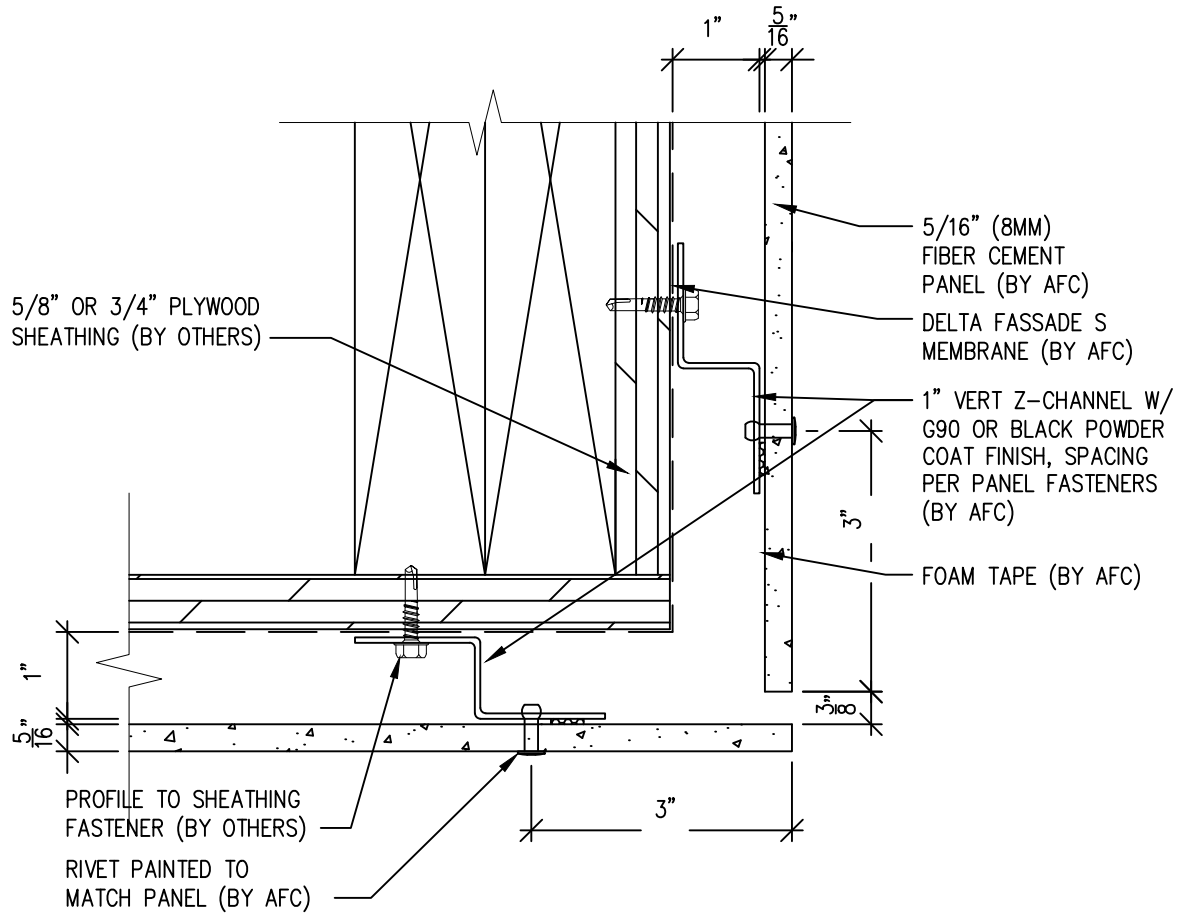
(303) 972-5107
6901 S Pierce St #180
Littleton, CO 80128

www.americanfiber cement.com

Ref.:
Panel Edge @
Butt Joint

Date: 06/07/2023

One Layer Steel Attach System



SCALE: 6"=1'-0"

NOTES:

1. PANEL VERTICAL AND HORIZONTAL JOINT SPACING SHOULD BE 3/8" TYPICAL.

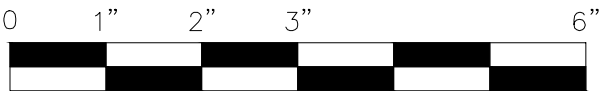
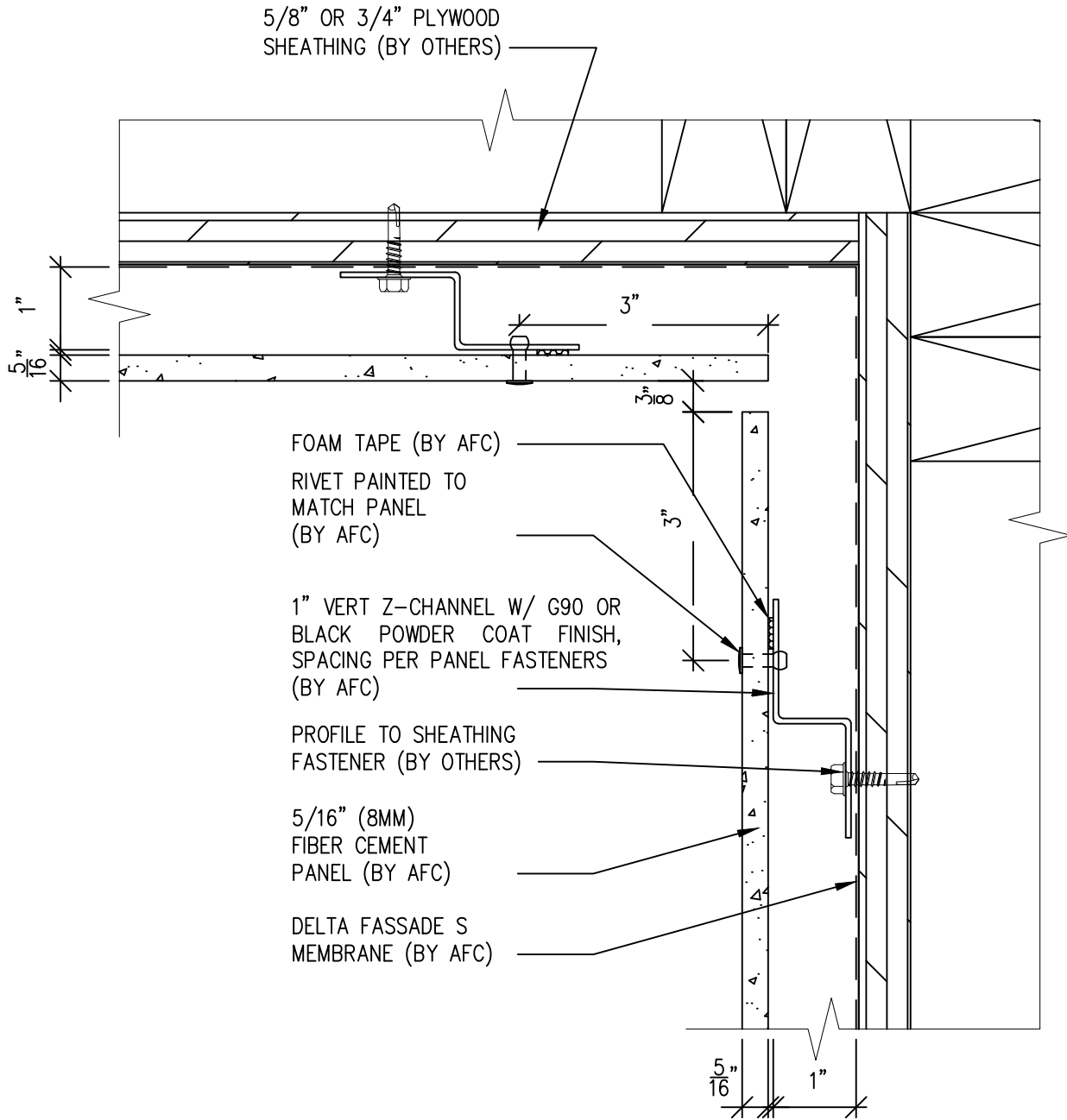


(303) 972-5107
 6901 S Pierce St #180
 Littleton, CO 80128
www.americanfiber cement.com

Ref.:
 Panels @
 Outside Corner

Date: 06/07/2023

One Layer Steel Attach System



SCALE: 6"=1'-0"

NOTES:

1. PANEL VERTICAL AND HORIZONTAL JOINT SPACING SHOULD BE 3/8" TYPICAL.

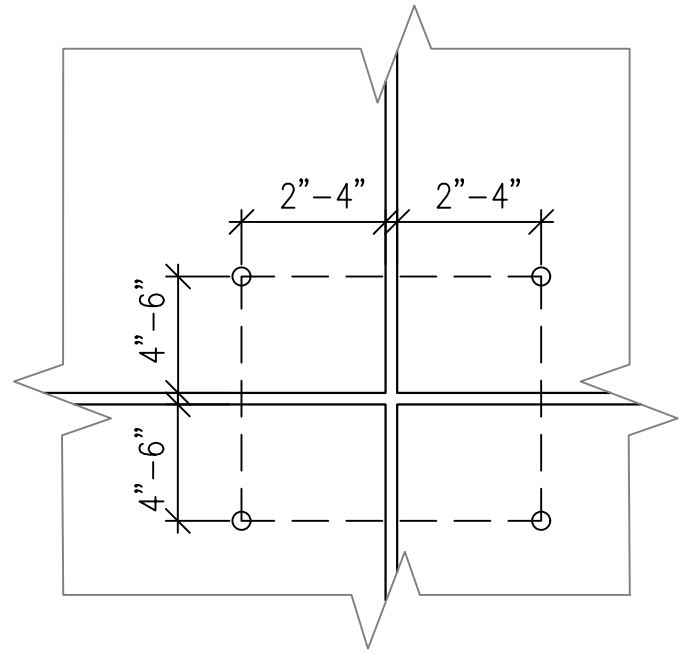
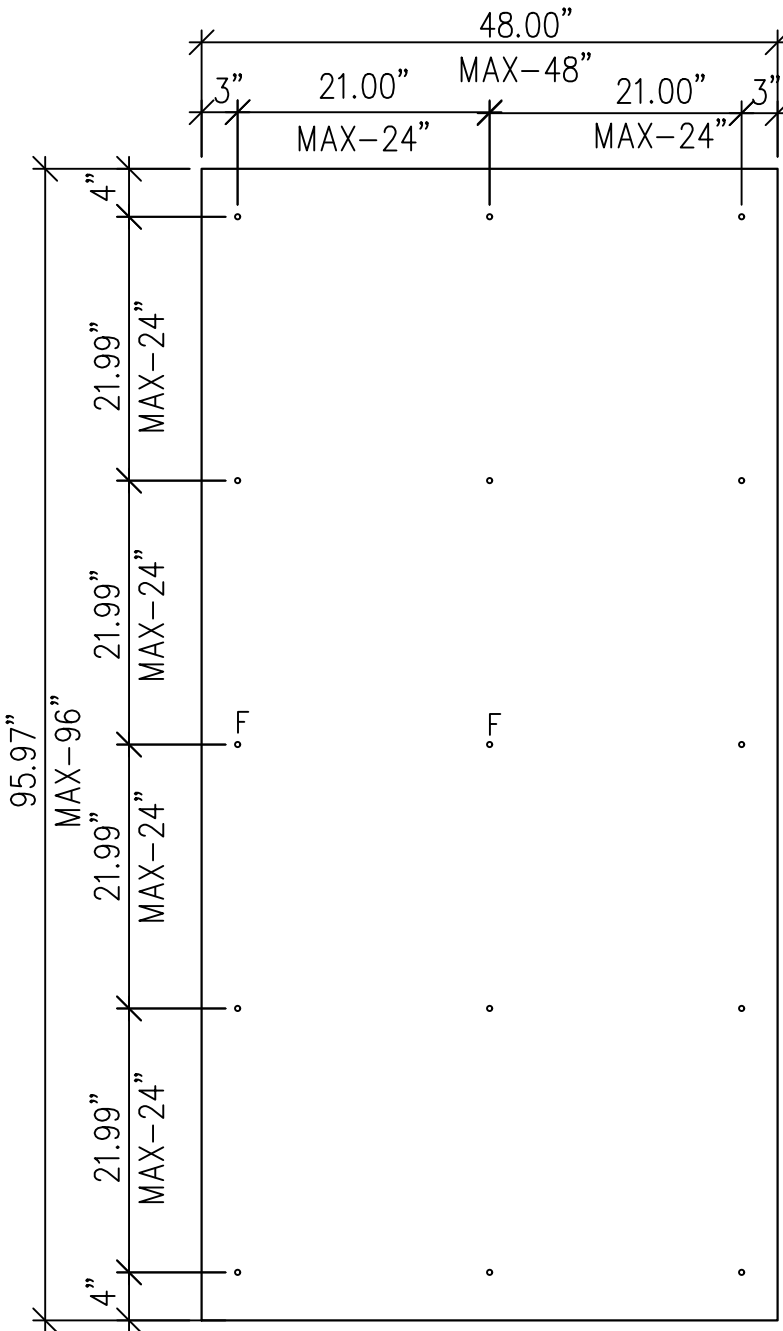


(303) 972-5107
 6901 S Pierce St #180
 Littleton, CO 80128
www.americanfiberceent.com

Ref.:
 Panel @
 Inside Corner

Date: 06/07/2023

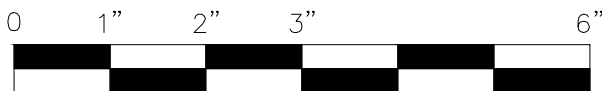
Typical Steel And Aluminum Attachment System



Typical Edge Fasteners
Scale 3"=1'

DRILLING KEY :

Metal (Steel and Aluminum) – Fixed Points 8.3 mm (Drill Bit Sourced from AFCC), Gliding Points 12mm (Drill Bit Sourced from AFCC)



SCALE 3/4"=1'-0"

NOTES:

1. PANEL VERTICAL AND HORIZONTAL JOINT SPACING SHOULD BE 3/8" TYPICAL.



(303) 972-5107
 6901 S Pierce St #180
 Littleton, CO 80128
www.americanfibercement.com

Ref.:
 Typical Fastner layout

Date: 06/07/2023