



AMERICAN  
FIBER CEMENT

**PRODUCT**

# CATALOG



# DISTINCT PROPERTIES



## Easy Handling

AFC utilizes state of the art fabrication equipment for the cleanest and most accurate cuts in the industry.



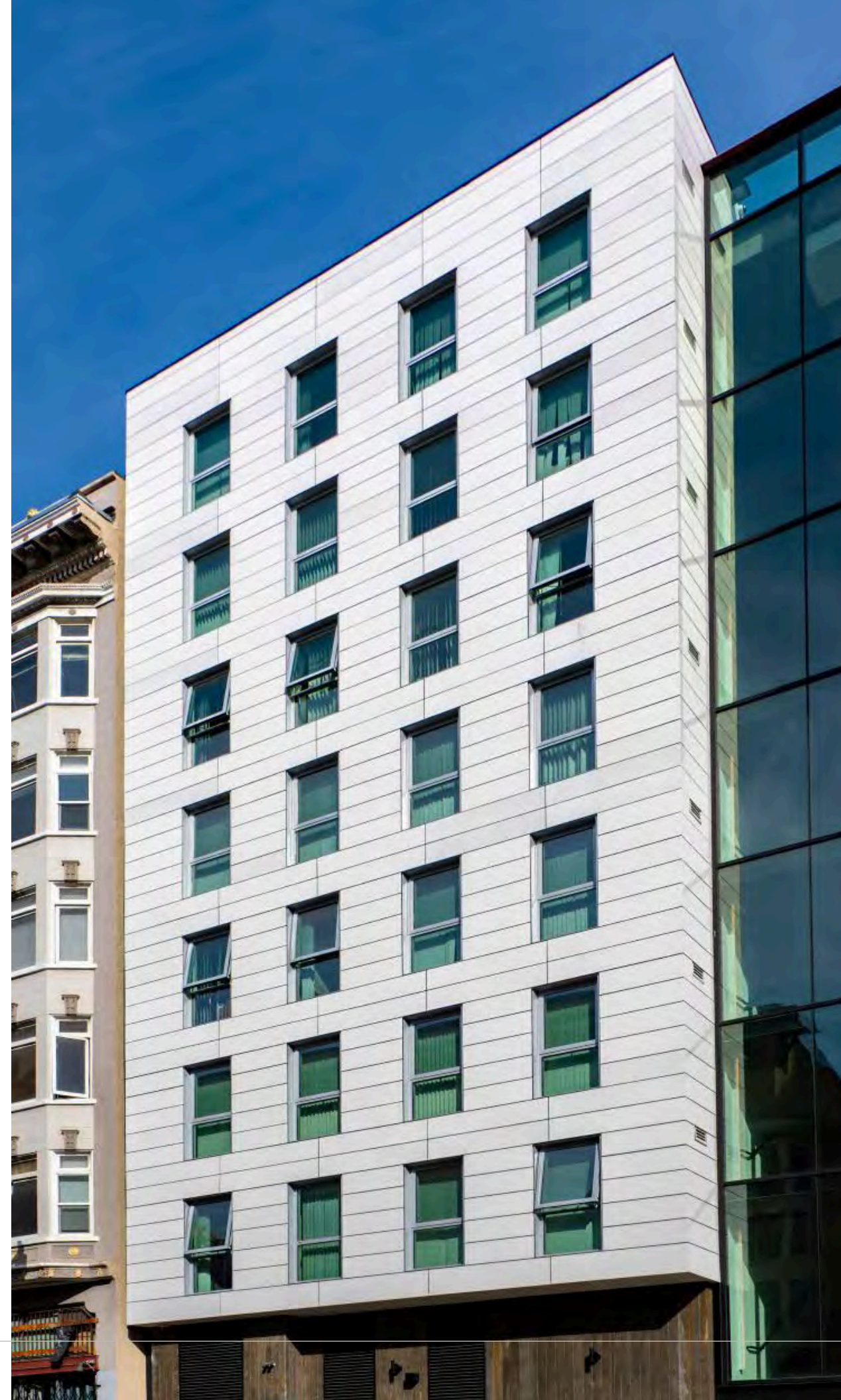
## Non-Combustible

The panels are non-combustible, ensuring a safe building with multiple NFPA 285 compatible options. *ASTM E136 & ASTM E84*



## Low Maintenance

With their impressive frost, mold, and algae resistance, the panels create a long-lasting facade, saving on costly repairs or repaints.



# A UNIQUE COMPOSITION

## 01

### Green Footprints

A comprehensive analysis of the environmental impact of the panels can be made from AFC's EPDs in accordance with EN 15804 on the Sustainability of Construction Works. The EPDs provide a Life-Cycle Assessment, manufacturing process details, and information on the use of any dangerous materials.

## 02

### Strong Recipe

The secret behind the strength and durability of high-density fiber cement panels is in the manufacturing technology. Thin layers of fiber cement are layered on top of each other and pressed firmly together under tremendous pressure before completing a curing process. Reinforced by carefully selected fibers, the many thin layers give the fiber cement cladding a strength that few peers have in the world of building materials.

## 03

### Natural Ingredients

With the strong composition of cement, mineral fillers, cellulose, and non-toxic organic fibers, AFC fiber cement panels are made from natural, environmentally friendly, raw materials creating sustainable, fully reusable panels.

EXPLORE

# OUR PRODUCT LINES

## AFC Carbon +

1. AFC Carbon Stone+
2. AFC Carbon Groove+
3. AFC Carbon Lines+
4. AFC Carbon Reflect+

## AFC Lines+

1. AFC Lines+ Pearl
2. AFC Lines+ Granite
3. AFC Lines+ Graphite
4. AFC Lines+ Sand
5. AFC Lines+ Parchment
6. AFC Lines+ Tufa
7. AFC Lines+ Adobe
8. AFC Lines+ Magma
9. AFC Lines+ Ruby
10. AFC Lines+ Amber
11. AFC Lines+ Emerald

## AFC Sky

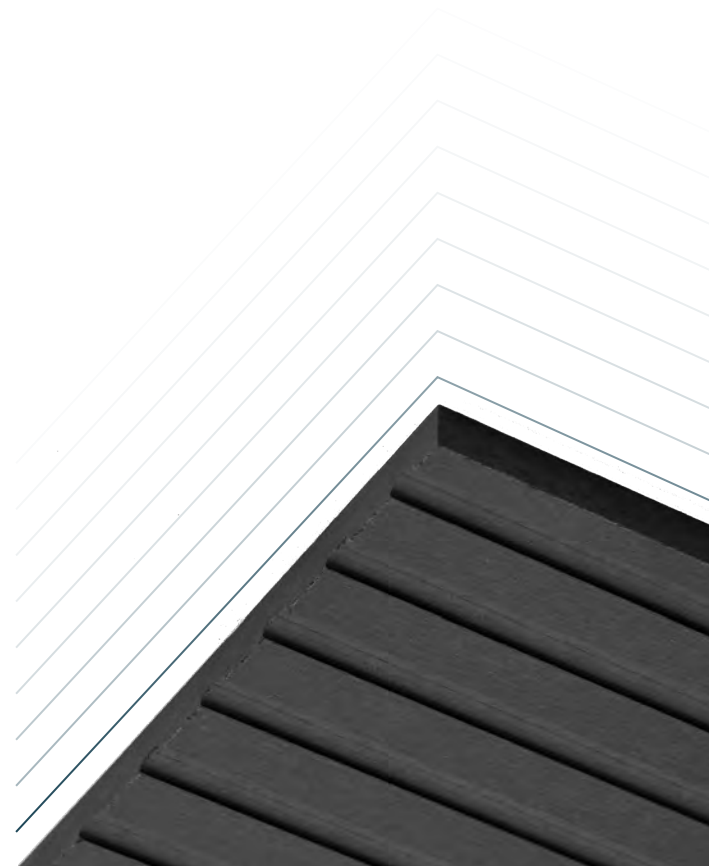
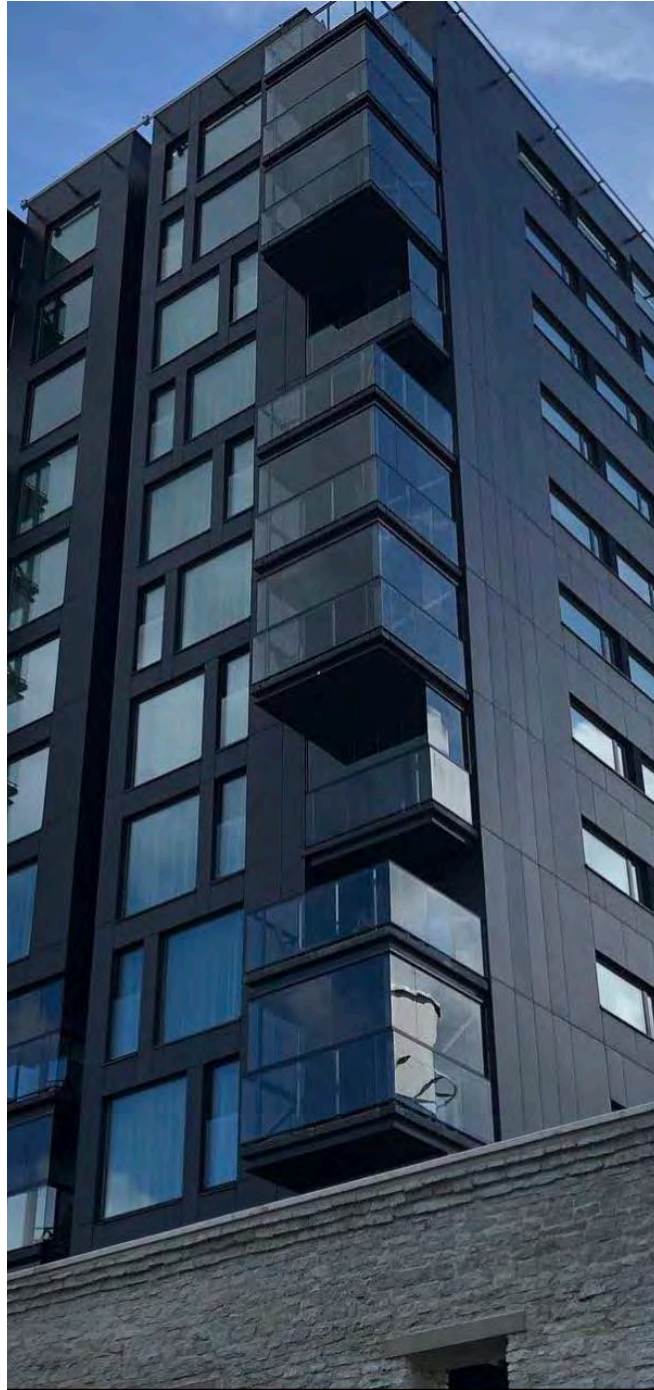
1. AFC Sky Granite
2. AFC Sky Graphite
3. AFC Sky Sand
4. AFC Sky Parchment
5. AFC Sky Tufa
6. AFC Sky Adobe
7. AFC Sky Magma
8. AFC Sky Ruby
9. AFC Sky Amber
10. AFC Sky Emerald





AFC CARBON+

# AFC CARBON+



## About

AFC Carbon+ is a through-colored, dark fiber cement panel that comes in four different finishes: a lightly sanded grain with Stone+, a deeply sanded grain with Lines+, routed linear grooves with Groove+, and a shiny light sanded grain with Reflect+. Each option plays with the sunlight in a different way. All four finishes utilize a UV and water-resistant coating which minimizes fading to create a lasting dark appearance.

## U.S. Squared & Trimmed Sizes

*\*at additional cost*

Thickness	Width
8 mm, 10 mm (Groove+ is only 10 mm)	48 in
Length	Weight
96 in 119.875 in	2.62 lbs/ft <sup>2</sup> , 3.28 lbs/ft <sup>2</sup>

## U.S. Untrimmed Sizes

Length	Weight
98.4 in (2,500mm) 120.1 in (3,050 mm)	49.2 in (1,250 mm)

## Features

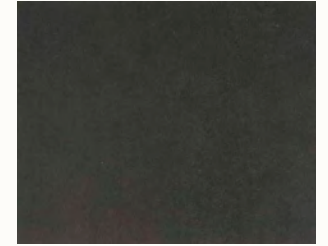
- ◇ 1 color, 4 unique finishes
- ◇ Darkest, naturally pigmented fiber cement in the industry.
- ◇ Enhanced surface coating significantly reduces fading.
- ◇ 15-year durability warranty.

## Benefits

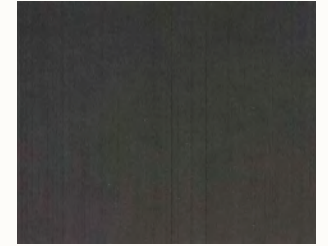
- ◇ Non-Combustible
- ◇ Maintenance-Free
- ◇ Colorfast
- ◇ Frost, mold, and fungi-resistant

*The color charts displayed in this brochure give an impression of the available colors. Reproduction of the exact colors is restricted by the printing process. For an exact color match, samples are available upon request.*

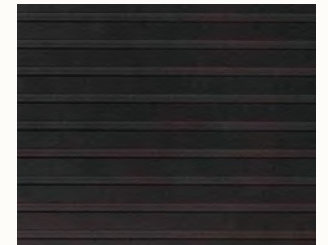
## Finishes



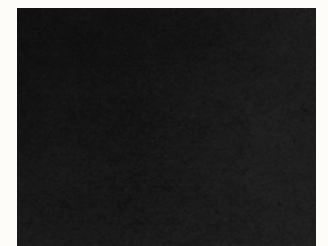
AFC Carbon Stone+



AFC Carbon Lines+



AFC Carbon Groove+

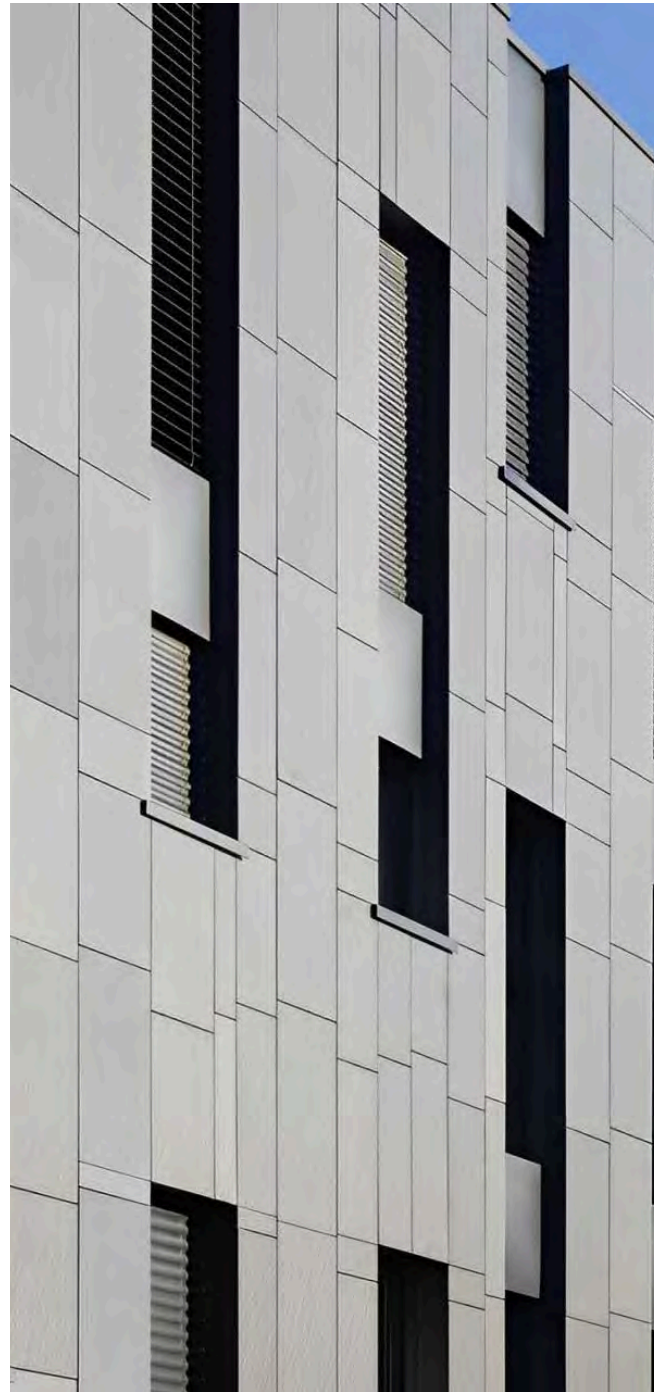


AFC Carbon Reflect+

AFC LINES+



# AFC LINES+



## About

AFC Lines+ creates a very distinct visual effect utilizing deep sanded linear grooves in the surface of the fiber cement. The sanding grooves in this through-colored product add texture and complexity to the building envelope which can change during different times of the day. With a wide range of color options, many different looks can be achieved.

## U.S. Squared & Trimmed Sizes

*\*at additional cost*

Thickness	Width
8 mm, 10 mm	48 in
Length	Weight
96 in	2.62 lbs/ft <sup>2</sup> , 3.28 lbs/ft <sup>2</sup>
119.875 in	

## U.S. Untrimmed Sizes

Length	Weight
98.4 in (2,500mm)	49.2 in
120.1 in (3,050 mm)	(1,250 mm)

## Features

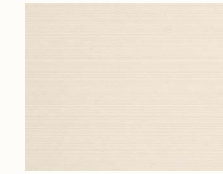
- ◇ 11 Colors
- ◇ Deep sanding lines on the surface
- ◇ Enhanced surface coating significantly reduces fading.
- ◇ 15-year durability warranty

## Benefits

- ◇ Non-Combustible
- ◇ Maintenance-Free
- ◇ Colorfast
- ◇ Frost, mold, and fungi-resistant

*The color charts displayed in this brochure give an impression of the available colors. Reproduction of the exact colors is restricted by the printing process. For an exact color match, samples are available upon request.*

## Colors



AFC Lines+ Pearl



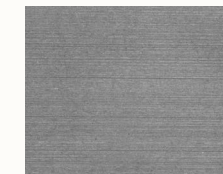
AFC Lines+ Adobe



AFC Lines+ Granite



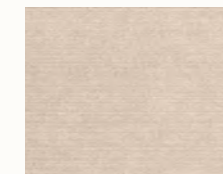
AFC Lines+ Magma



AFC Lines+ Graphite



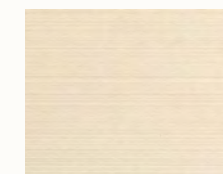
AFC Lines+ Ruby



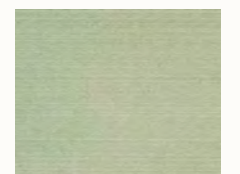
AFC Lines+ Sand



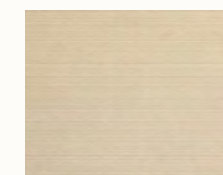
AFC Lines+ Amber



AFC Lines+ Parchment



AFC Lines+ Emerald



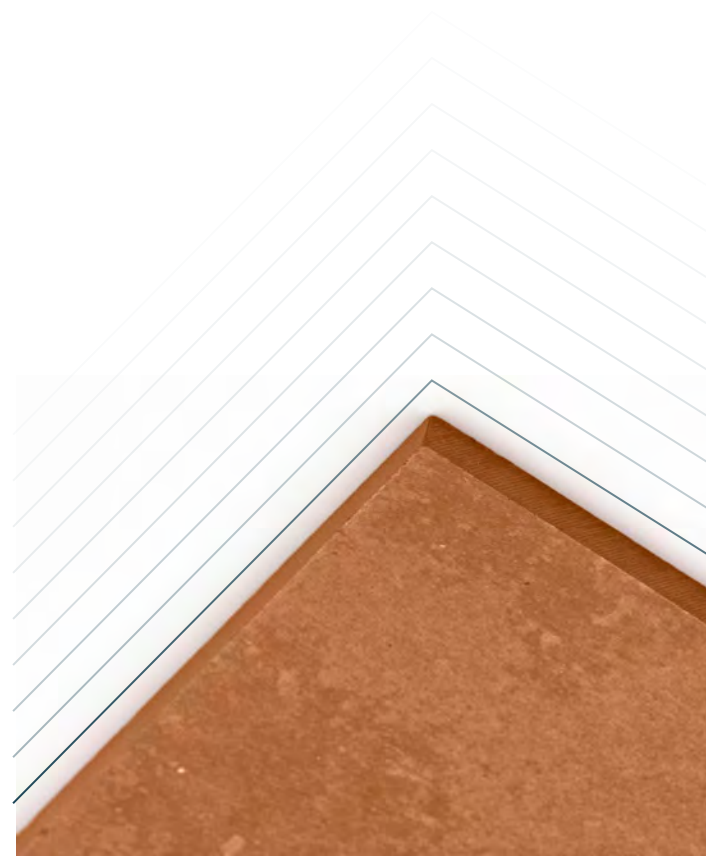
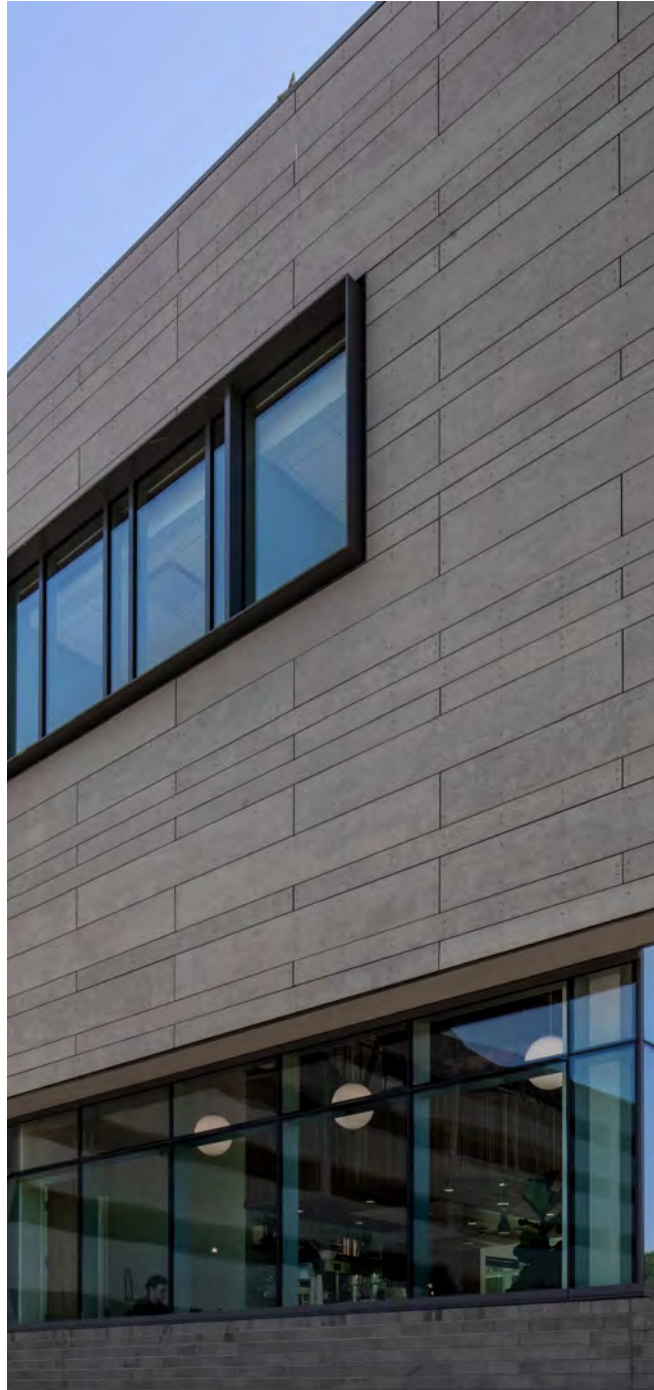
AFC Lines+ Tufa

AFC SKY





# AFC SKY



## About

AFC Sky is a through-colored fiber cement panel which utilizes a special sandblasted surface treatment. It highlights the soft tones giving the illusion that you are looking at the sky on a partly cloudy day. This surface treatment provides a natural yet elegant look while maintaining the panel's durability and performance. AFC Sky will naturally model and age as time passes, further highlighting the different tones underneath the surface.

## U.S. Squared & Trimmed Sizes

*\*at additional cost*

Thickness	Width
8 mm, 10 mm	48 in
Length	Weight
96 in (2,500 mm)	2.62 lbs/ft <sup>2</sup> , 3.28 lbs/ft <sup>2</sup>
119.875 in	

## U.S. Untrimmed Sizes

Length	Weight
98.4 in (2,500mm)	49.2 in
120.1 in (3,050 mm)	(1,250 mm)

## Features

- ◇ 10 Colors
- ◇ Cloudy, natural surface appearance
- ◇ 15-year durability warranty

## Benefits

- ◇ Non-Combustible
- ◇ Maintenance-Free
- ◇ Colorfast
- ◇ Frost, mold, and fungi-resistant

*The color charts displayed in this brochure give an impression of the available colors. Reproduction of the exact colors is restricted by the printing process. For an exact color match, samples are available upon request.*

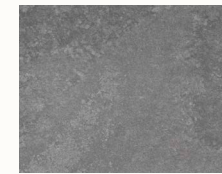
## Colors



AFC Sky Granite



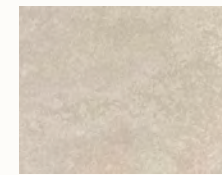
AFC Sky Adobe



AFC Sky Graphite



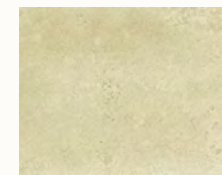
AFC Sky Magma



AFC Sky Sand



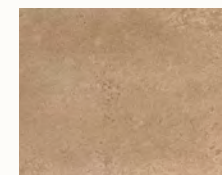
AFC Sky Ruby



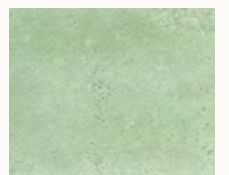
AFC Sky Parchment



AFC Sky Amber



AFC Sky Tufa



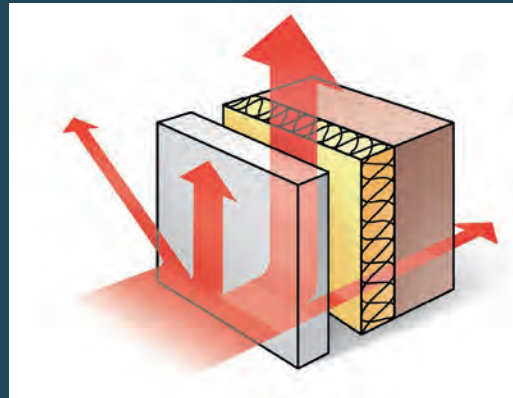
AFC Sky Emerald

# PRODUCT BENEFITS

AFC panels are sustainable and incredibly durable. With a long lifespan that requires minimal refurbishment, they save money and materials in the long run.

The Ventilated and Insulated Rainscreen Cladding System, used to affix AFC panels to the exterior of a structure, offers many benefits and green attributes to the performance of the building envelope. Continuous insulation may be used and internal condensation is reduced through the drying of the air cavity via the chimney effect. The result is a durable structure with resistance to moisture and mold while maintaining endless cladding design capabilities.

Contact AFC for LEED credit information.






American Fiber Cement  
**Serving the U.S. and Canada**

---

 303.972.5107

 [AmericanFiberCement.com](https://www.AmericanFiberCement.com)

 6901 South Pierce Street, Suite 180  
Littleton, CO 80128 USA