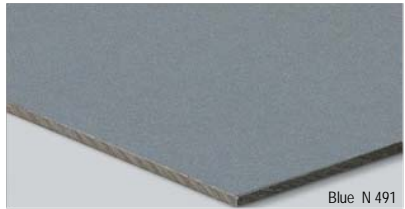
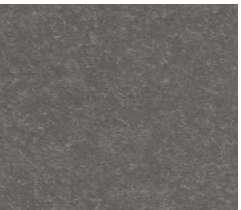


This product is manufactured by *Eternit* and exclusively distributed in North America by *American Fiber Cement Corporation*.

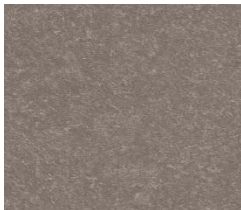
NATURA / NATURA PRO



4 colours with transparent coating on throughcoloured fibre cement (Carat)



Anthracite N 251



Natural grey N 250



Creamwhite N 154

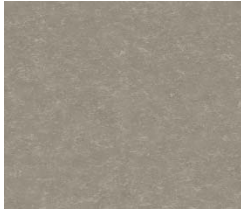


Ruby N 359

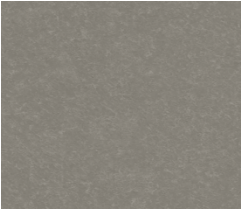
9 colours coated on natural grey fibre cement



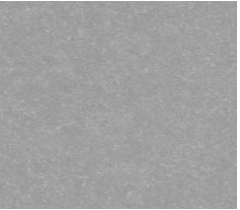
Beige N 891



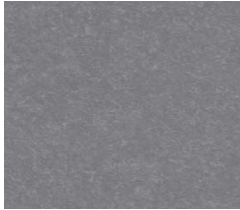
Beige N 892



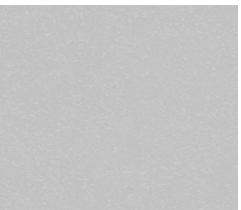
Grey N 291



Grey N 292



Grey N 293



White N 191



Blue N 491



Green N 591



Green N 592

Underlined colours = colours in stock of NATURA.

In stock assortment of NATURA PRO:
 Anthracite N 251, Natural grey N 250,
 Creamwhite N 154, Ruby N 359 and Blue N 472.

Advice for all colours:
 The colour chart gives an impression of the colours available.
 Reproduction of the exact colour is restricted by the printing process.
 For an exact colour match, samples are available on request.

Untrimmed sizes

Thickness	8 mm or 12 mm	8 mm or 12 mm
Width	1,280 mm	1,280 mm
Length	2,530 mm	3,130 mm

Trimmed sizes

Thickness	8 mm or 12 mm	8 mm or 12 mm
Width	1,250 mm	1,250 mm
Length	2,500 mm	3,100 mm